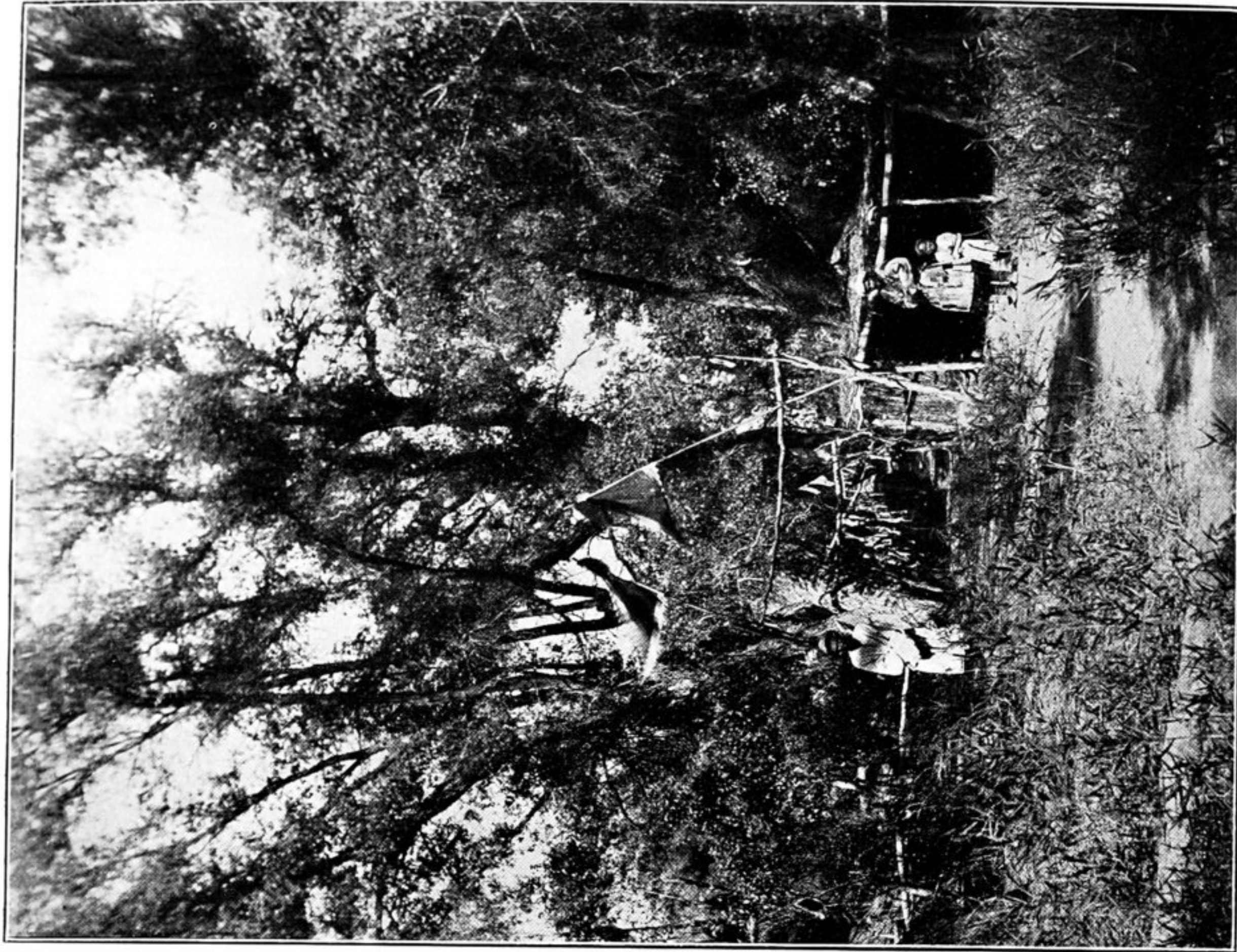


68. GORGE OF KIZIL JILGA, BELOW TARIM KISHLAK, ON
ROUTE ACROSS TIKELIK-TAGH.



69. GATE WITH VOTIVE OFFERINGS ON PATH TO SHRINE OF
IMAM JA'FAR SADIK.

On left Ibrahim, 'the miller,' on right, mendicant with son; see page 267.