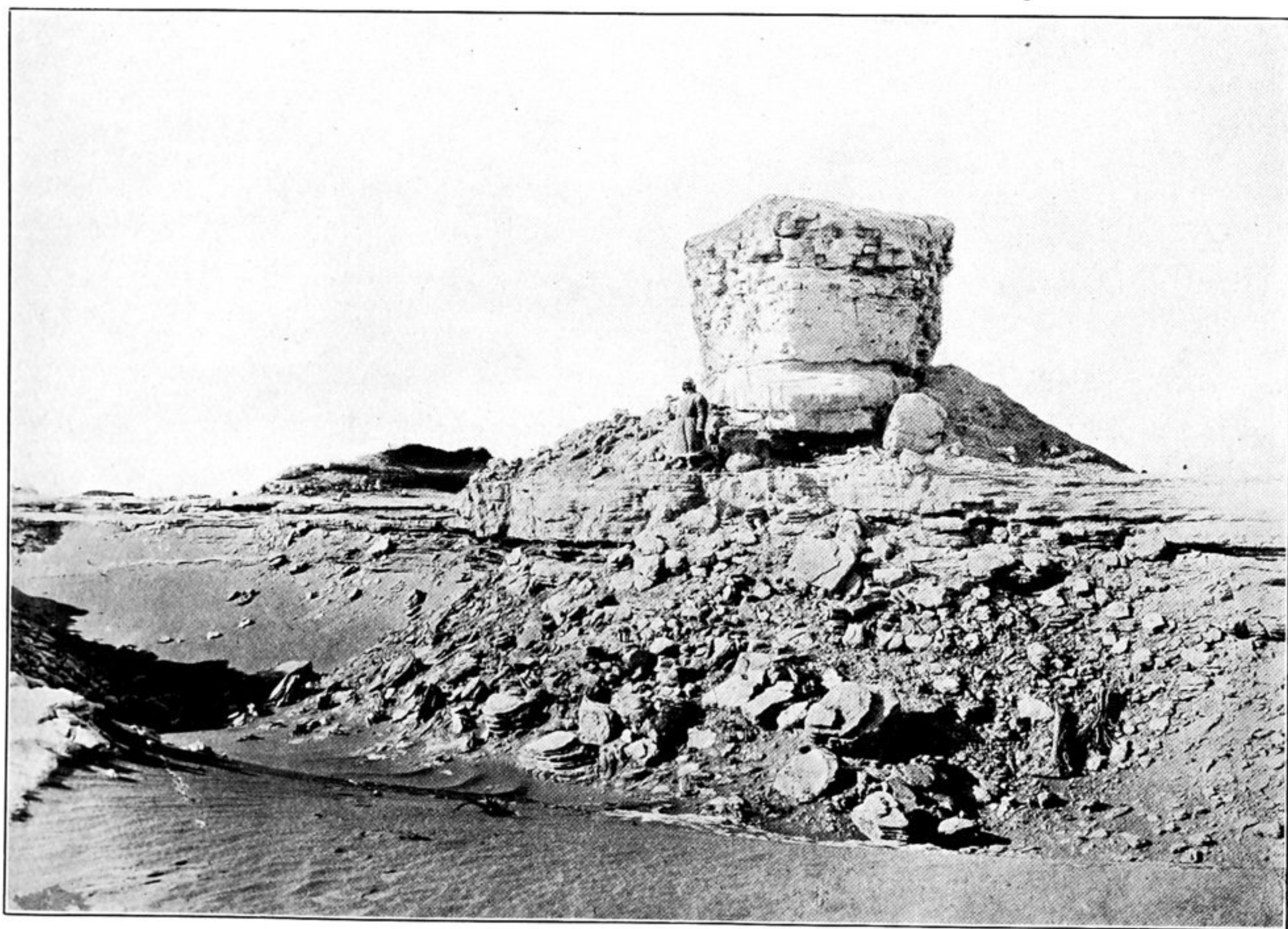




120. REMAINS OF ANCIENT BUDDHIST SHRINE LB. II., LOP-NOR SITE, BEFORE CLEARING.



121. RUIN OF SMALL STUPA NEAR SHRINE LB. II., LOP-NOR SITE, RISING ON 'YARDANG' WHICH WIND EROSION IS UNDERCUTTING.