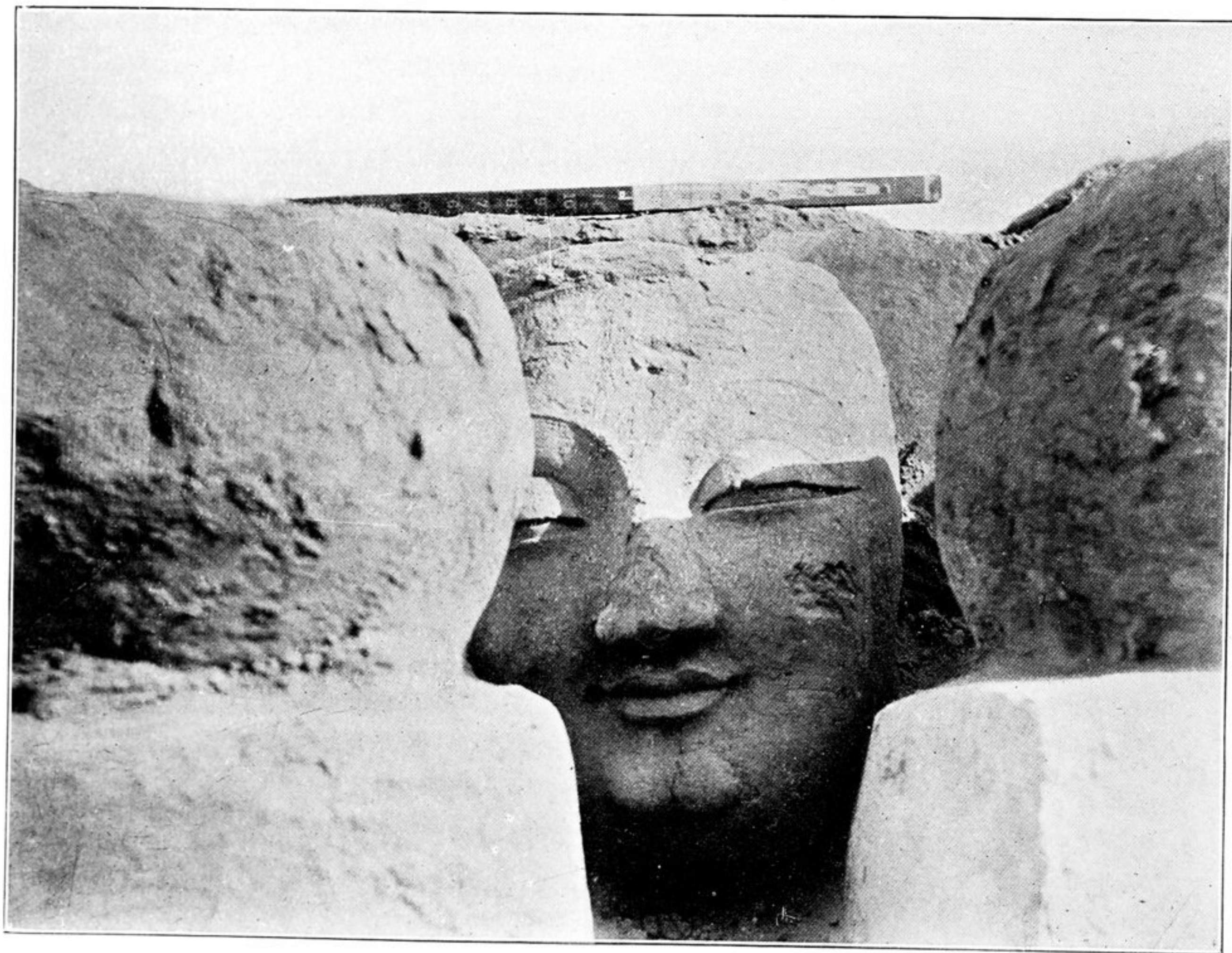




140. REMAINS OF COLOSSAL FIGURES OF SEATED BUDDHAS IN NORTH-EAST PASSAGE OF RUINED SHRINE M. II., MIRAN SITE.



141. STUCCO HEAD OF COLOSSAL BUDDHA FIGURE, AS DISCOVERED BETWEEN STATUE BASES IN RUINED SHRINE M. II., MIRAN SITE.