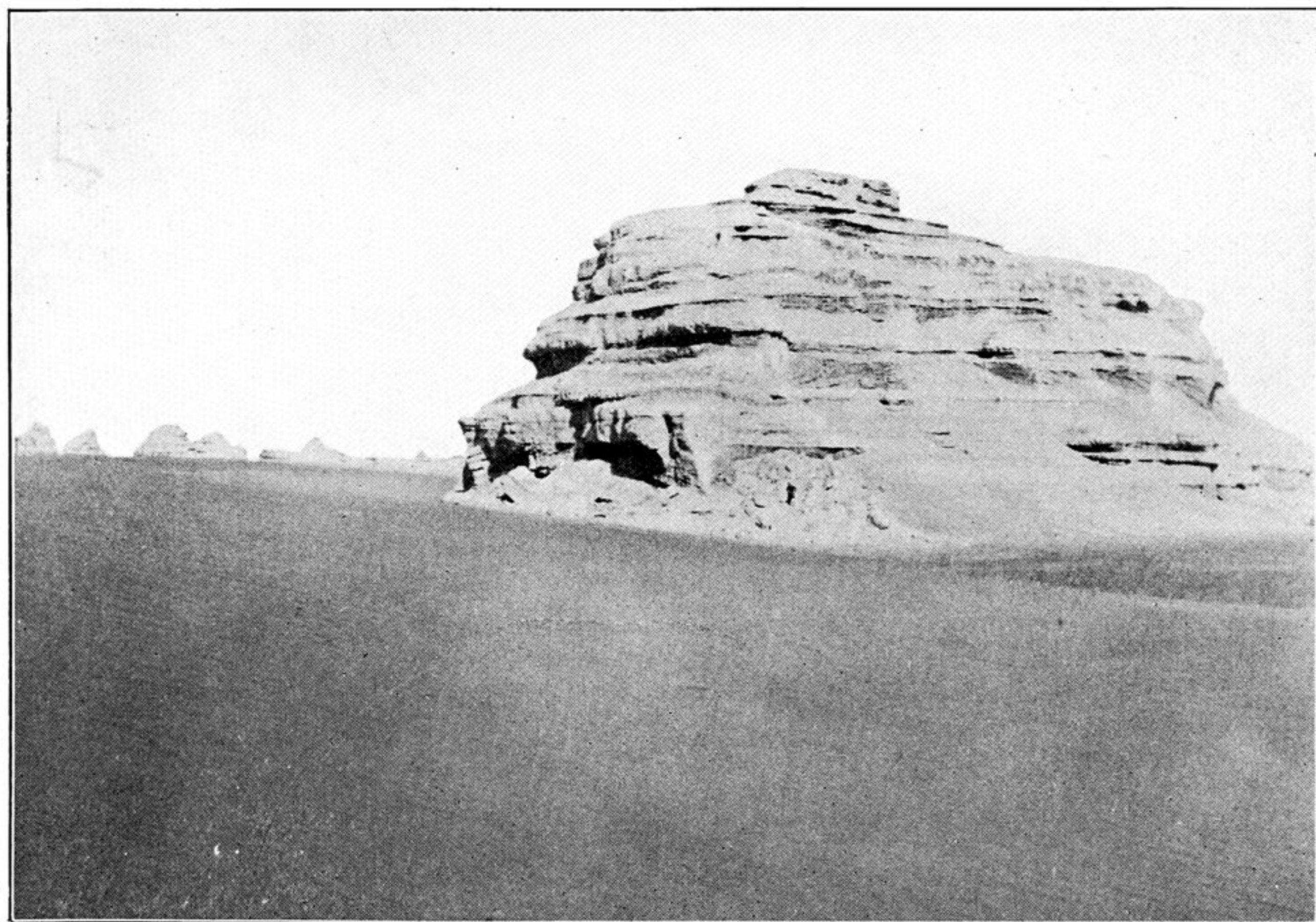


151. CAMPING-GROUND OF BESH-TOGHRAK, ON ROUTE TO TUN-HUANG.



152. ERODED CLAY TERRACE NEAR WESTERN EDGE OF OLD TERMINAL BASIN OF SU-LO HO.
The small figure of the man standing at the foot of the terrace helps to give an idea of its height.