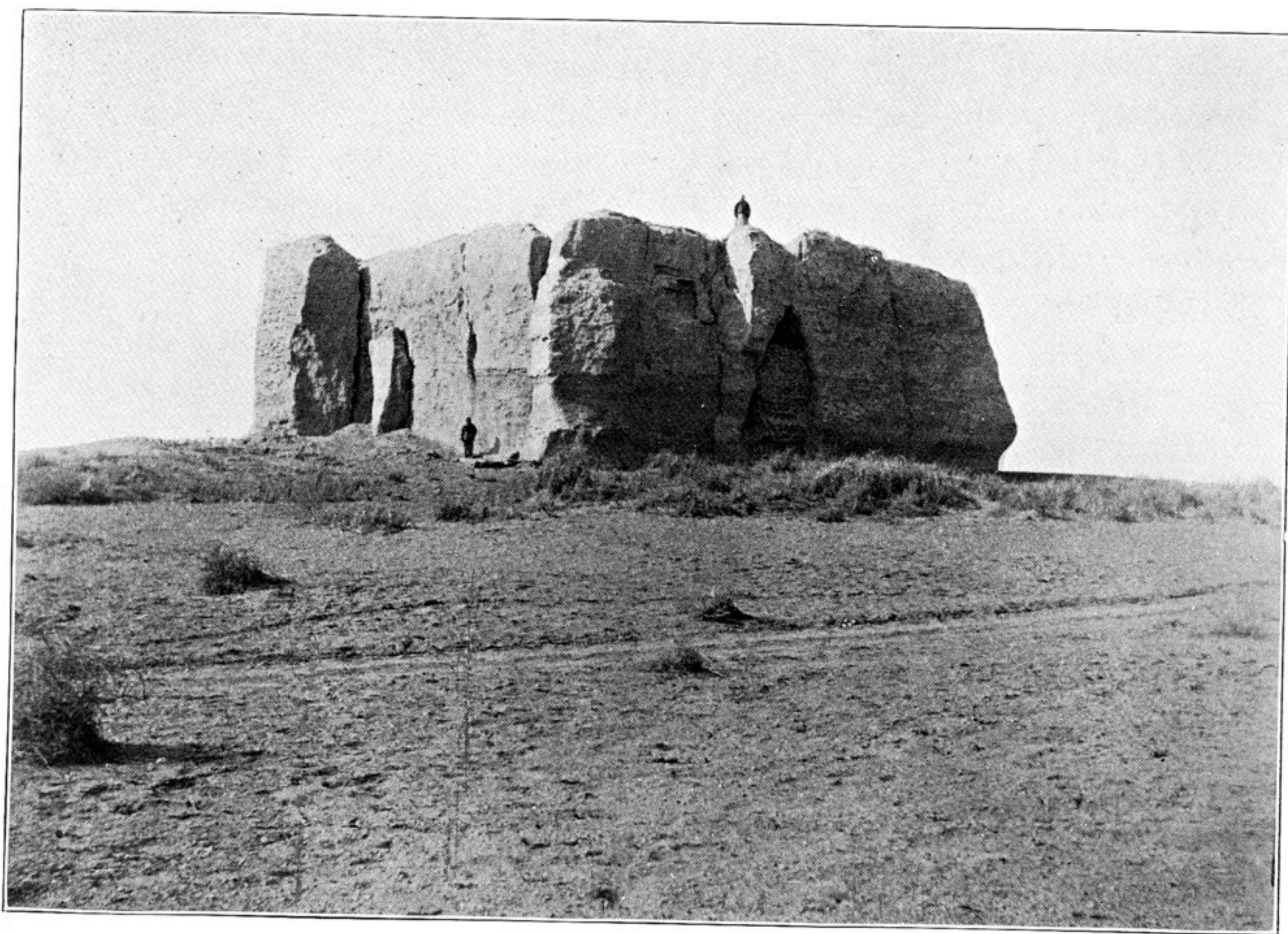


153. RUIN OF ANCIENT WATCH-TOWER T. III., NEAR WESTERN END OF TUN-HUANG LIMES.
The spot where the first discovery of an early Chinese record on wood was made is marked by the two men in foreground.



154. RUIN OF ANCIENT CHINESE FORT T. XIV., MARKING THE POSITION OF THE
'JADE GATE,' SEEN FROM NORTH-EAST.