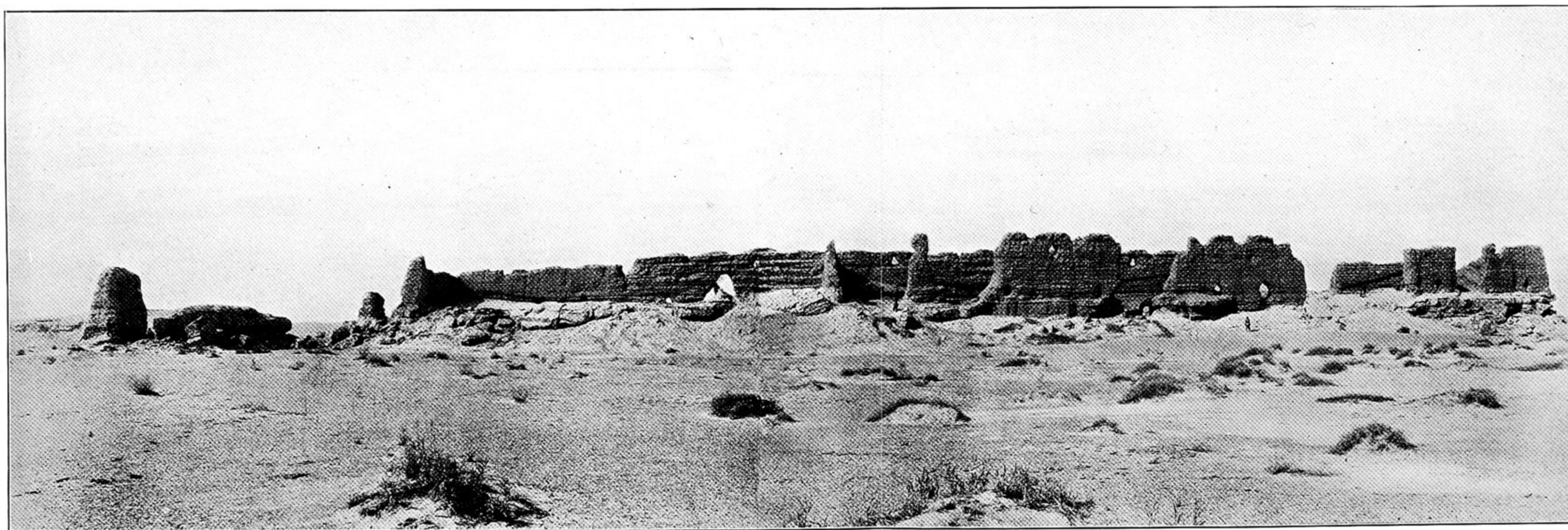


155. SHAGOLIN-NAMJIL RANGE, NAN-SHAN, SEEN FROM CAMP CCXV., ACROSS BASIN OF SU-LO HO HEAD-WATERS.



156. RUINS OF ANCIENT CHINESE MAGAZINE T. XVIII., TUN-HUANG *LIMES*, SEEN FROM SOUTH.

The figures of men standing at different points of the structure serve to indicate its size.