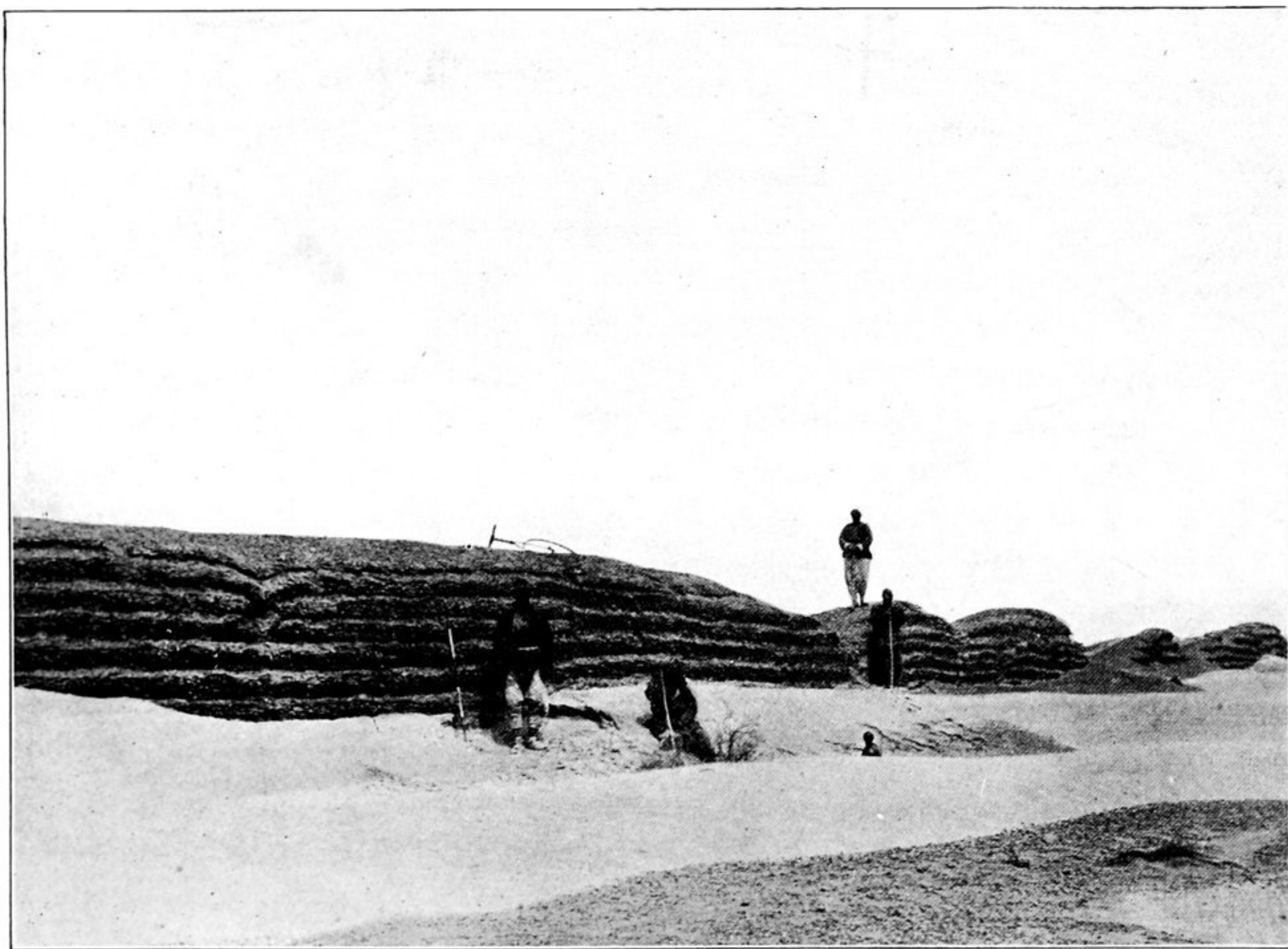


164. REMAINS OF ANCIENT WATCH-TOWER T. XXVII., TUN-HUANG LIMES.  
The ruin stands on a natural clay terrace of which the continuation is seen on right.  
Naik Ram Singh in foreground.



165. REMAINS OF ANCIENT BORDER WALL, BETWEEN LOW DUNES, EAST OF TOWER  
T. XXXV., TUN-HUANG LIMES.  
The Chinese labourer on left stands on surface of low gravel mound.