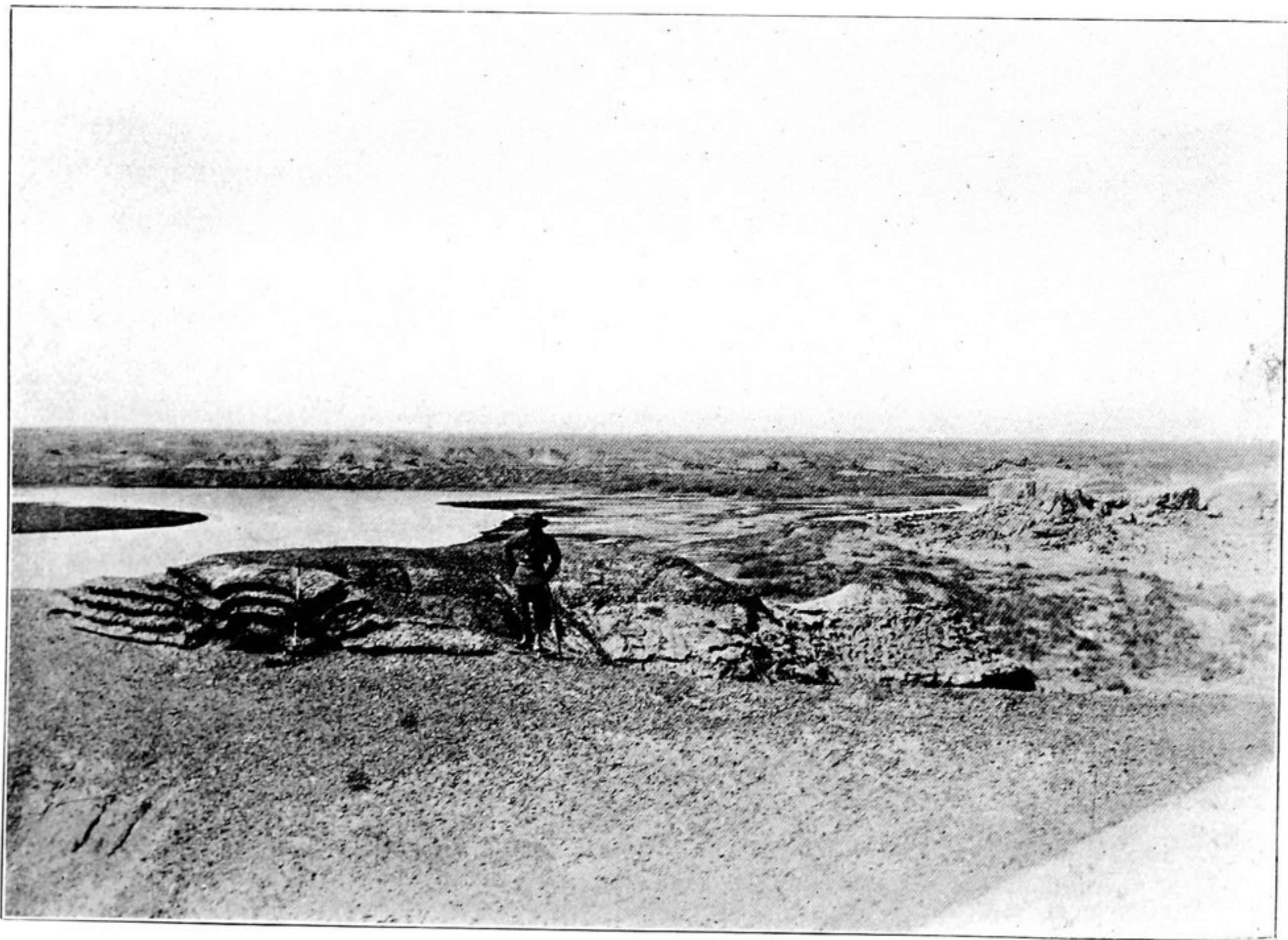


175. STRETCH OF ANCIENT BORDER-WALL, BUILT OF LAYERS OF REED FASCINES AND CLAY,
EAST OF TOWER T. XIII., TUN-HUANG LIMES.



176. REMAINS OF ANCIENT BORDER-WALL ADJOINING SALT MARSH, TO WEST OF TOWER
T. XIV. A., TUN-HUANG LIMES, SEEN FROM SOUTH.