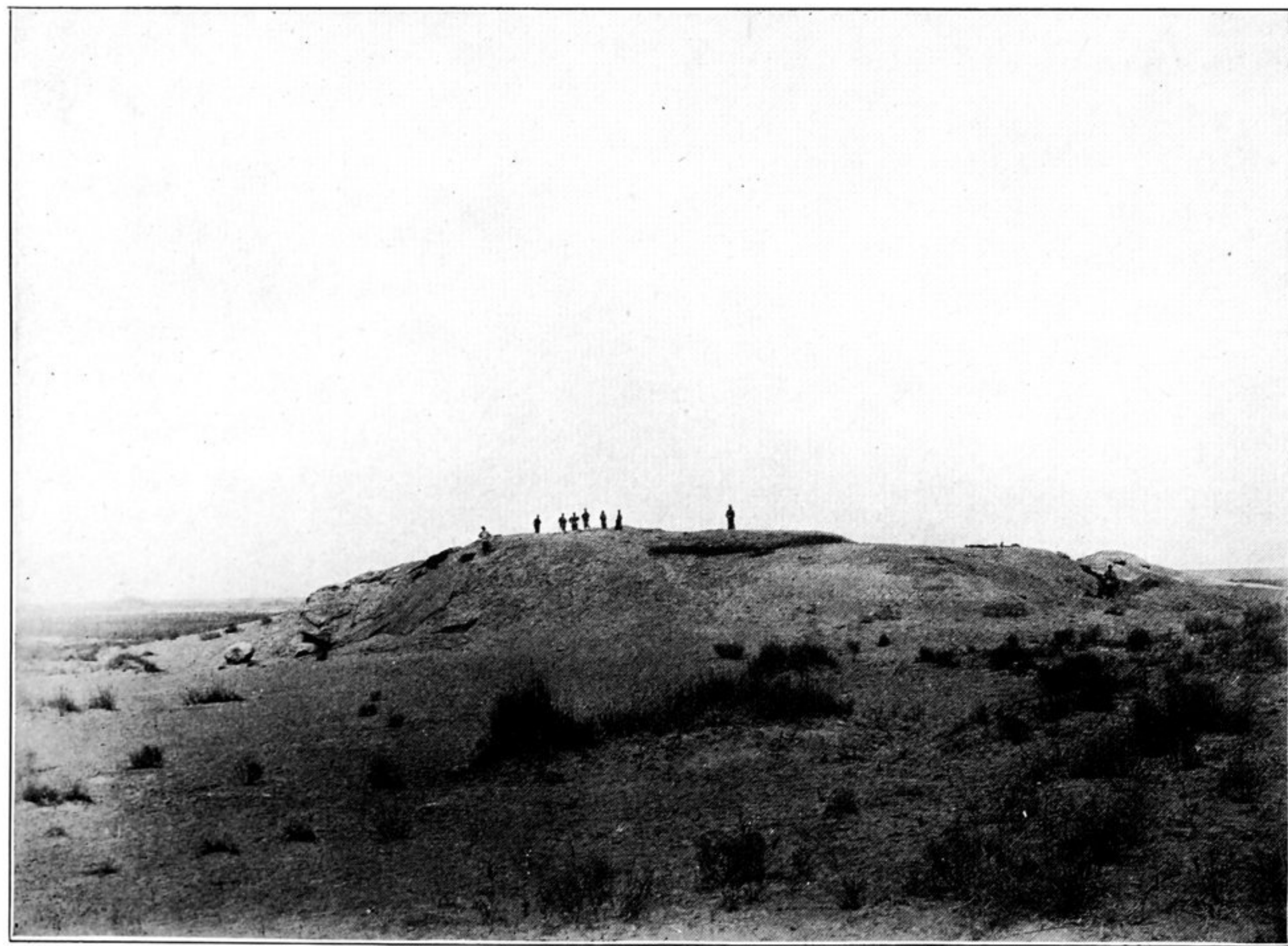




178. REMAINS OF ANCIENT WATCH-TOWER, T. XX., OVERLOOKING LAKE WEST OF KHARA-NOR,
TUN-HUANG LIMES.*



179. HILLOCK WITH REMAINS MARKING POSITION OF ANCIENT 'JADE GATE' STATION,
NEAR FORT T. XIV., TUN-HUANG LIMES.