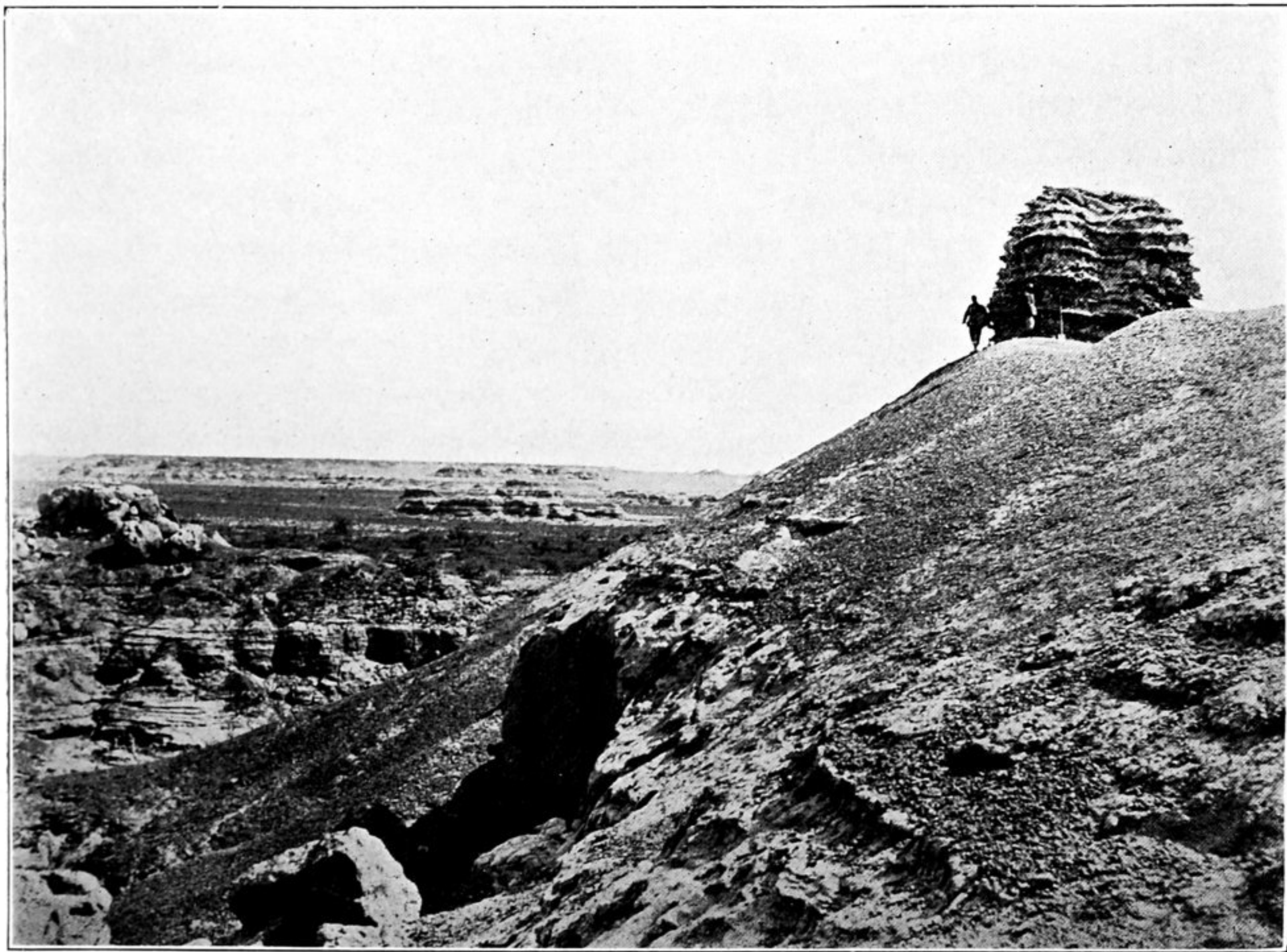


180. RUIN OF ANCIENT WATCH-TOWER, T. VI. A., ON WESTERN FLANK OF TUN-HUANG LIMES,  
SEEN FROM SOUTH.

The tower is built on an eroded clay ridge, and on right overlooks a depression with Toghraks and reed beds.

A

T. IV. C.



181. RUIN OF ANCIENT WATCH-TOWER, T. IV. C., ON WESTERN FLANK OF TUN-HUANG LIMES,  
WITH VIEW TO NORTH.

On left an eroded clay terrace with deep-cut Nullah. Across depression with Toghraks and tamarisks is seen in distance an isolated clay terrace (A), bearing remains of ruined watch-tower, T. IV. A.