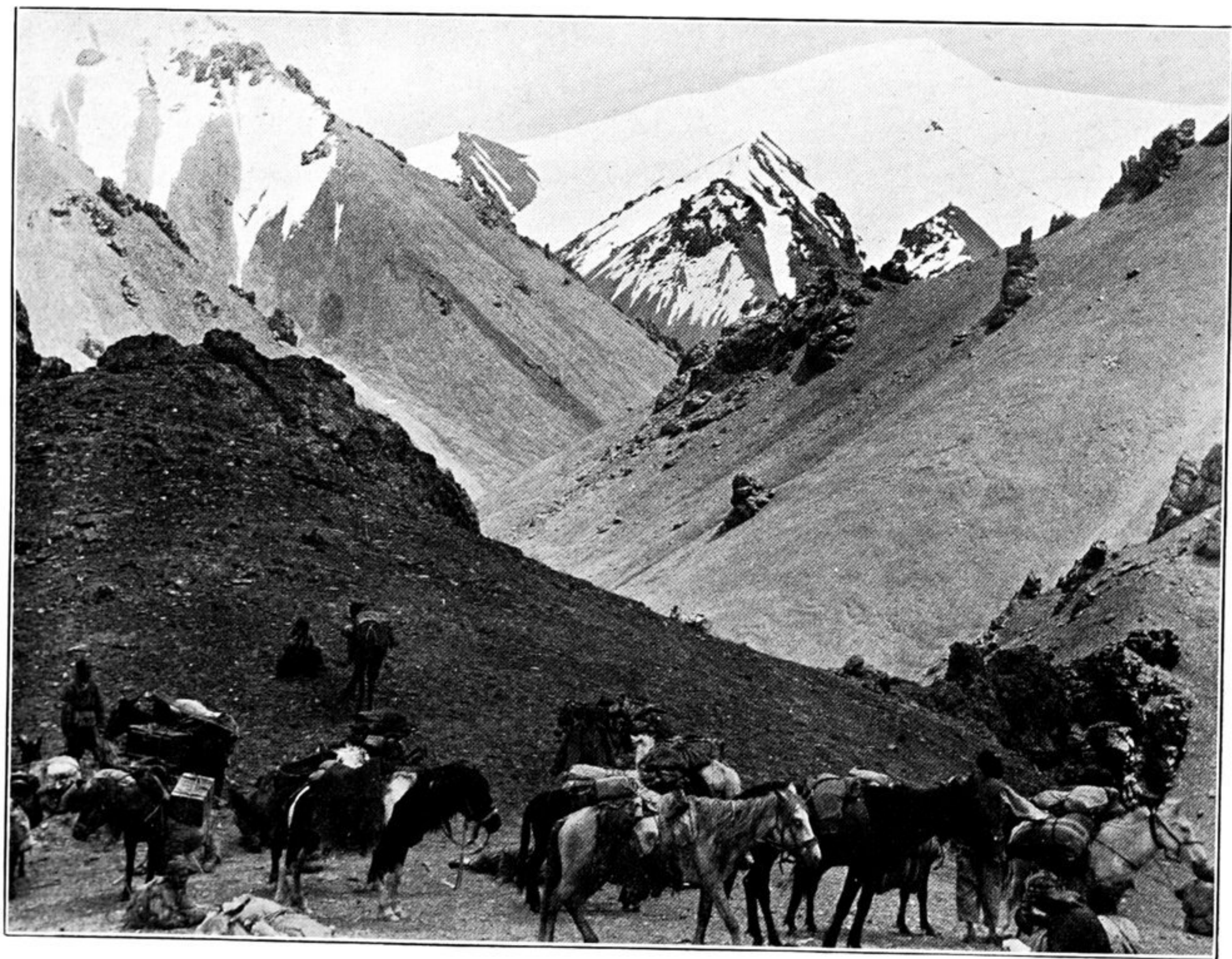




239. SNOW-FIELDS AT HEAD OF VALLEY EAST OF PASS ACROSS ALEXANDER III. RANGE.



240. SNOWY PEAK SEEN EASTWARDS FROM PASS ACROSS ALEXANDER III. RANGE.
Ponies resting in foreground ; elevation *circ.* 15,200 feet.