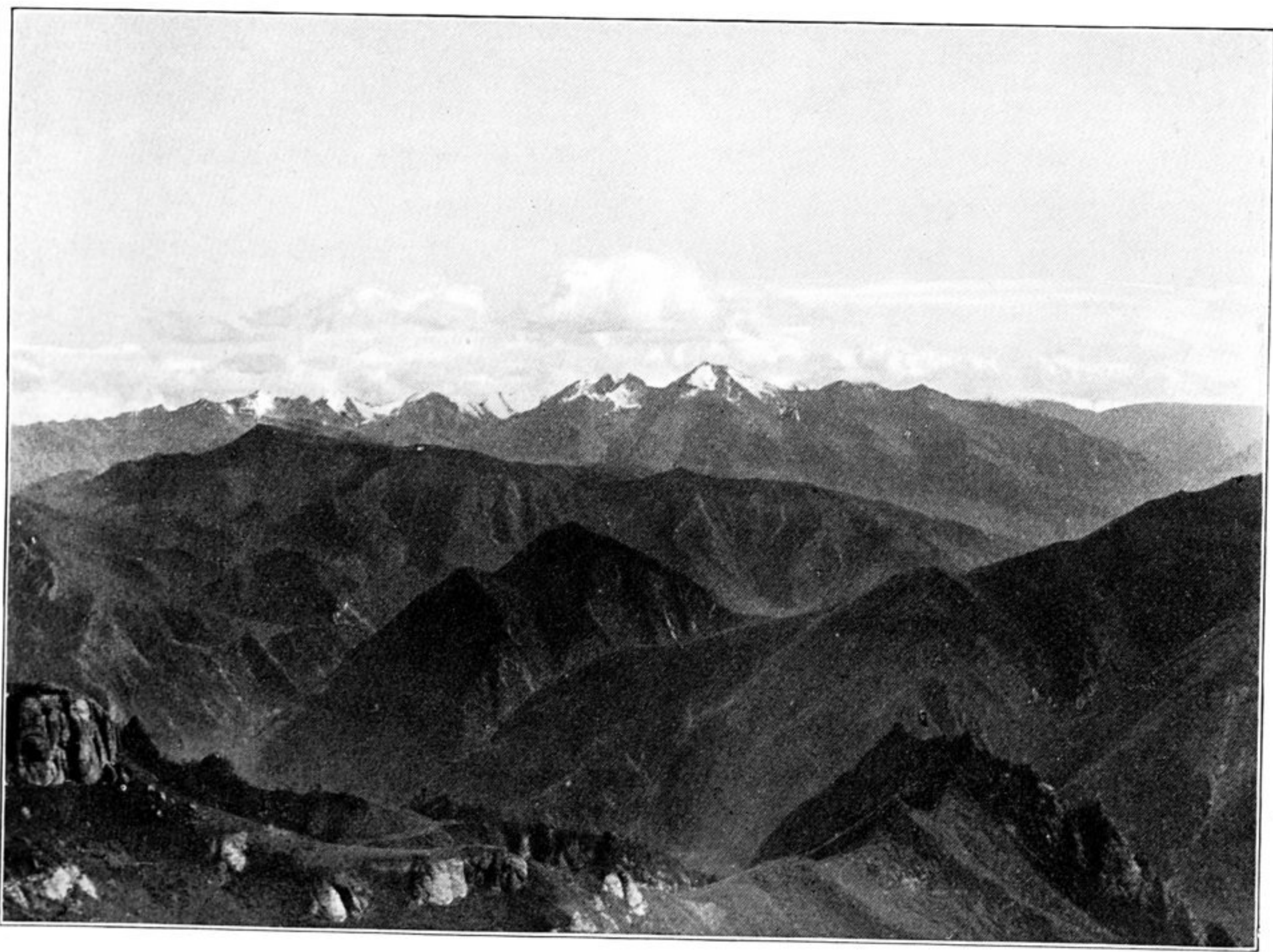




250. VIEW TO SOUTH FROM FIRST FOREST-CLAD RIDGE ABOVE KHAZAN-GOL.
The Khazan-gol is just visible in valley. In distance snowy peaks of main Richthofen Range.



251. VIEW SOUTH FROM FÊNG-TA-FAN TOWARDS MAIN RICHTHOFEN RANGE, ACROSS
KHAZAN-GOL VALLEY.