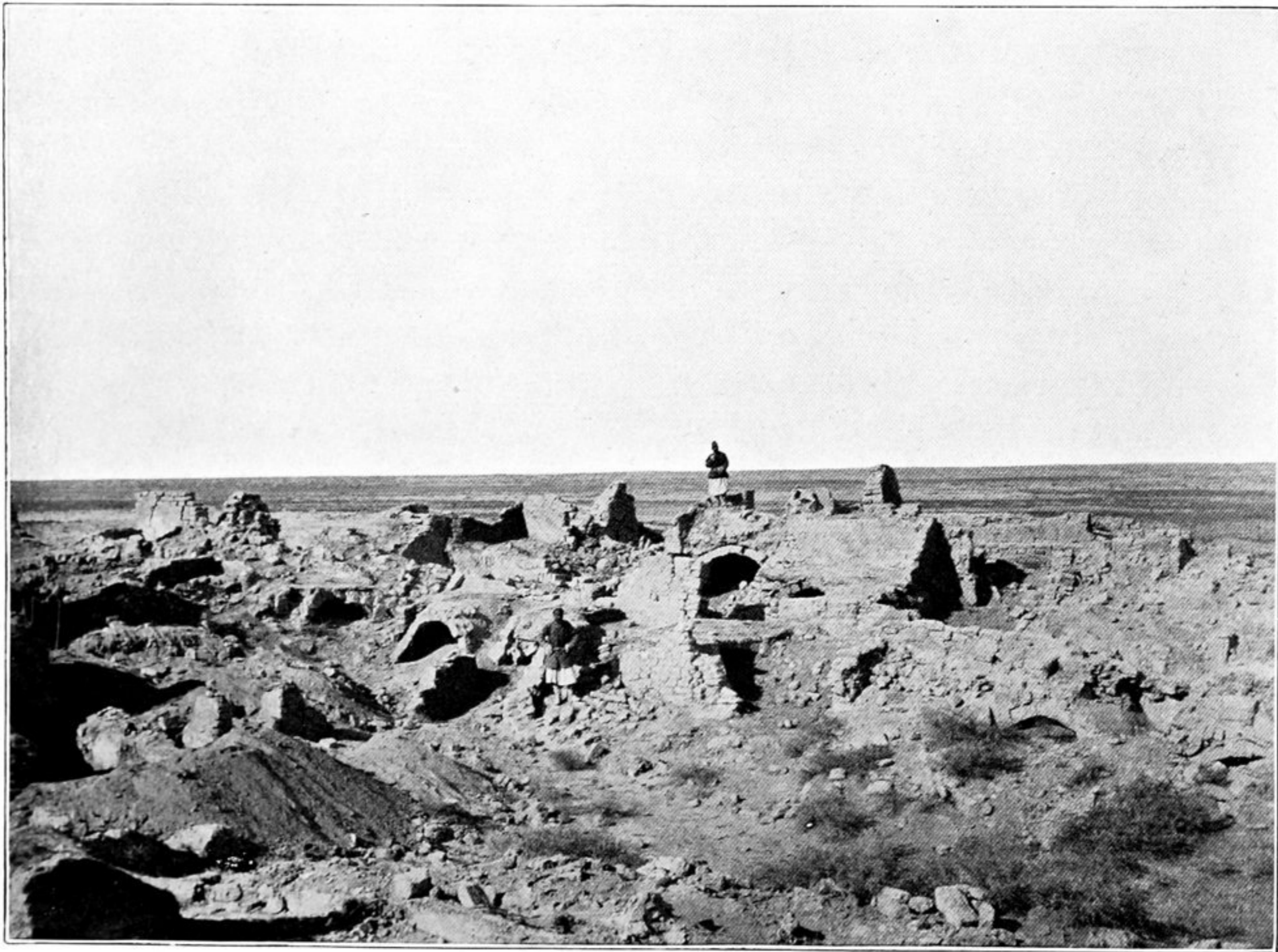




259. RIDGE WITH RUINED BUDDHIST SHRINES IN WANG'S ORCHARD AT ARA-TAM, HAMI.
Seen from ruined temple cellas south-west.



260. RUINED VAULTS AND CHAMBERS NEAR WEST WALL OF CHONG-HASSAR, TURFAN.
A marks approach to ruined Buddhist cella.