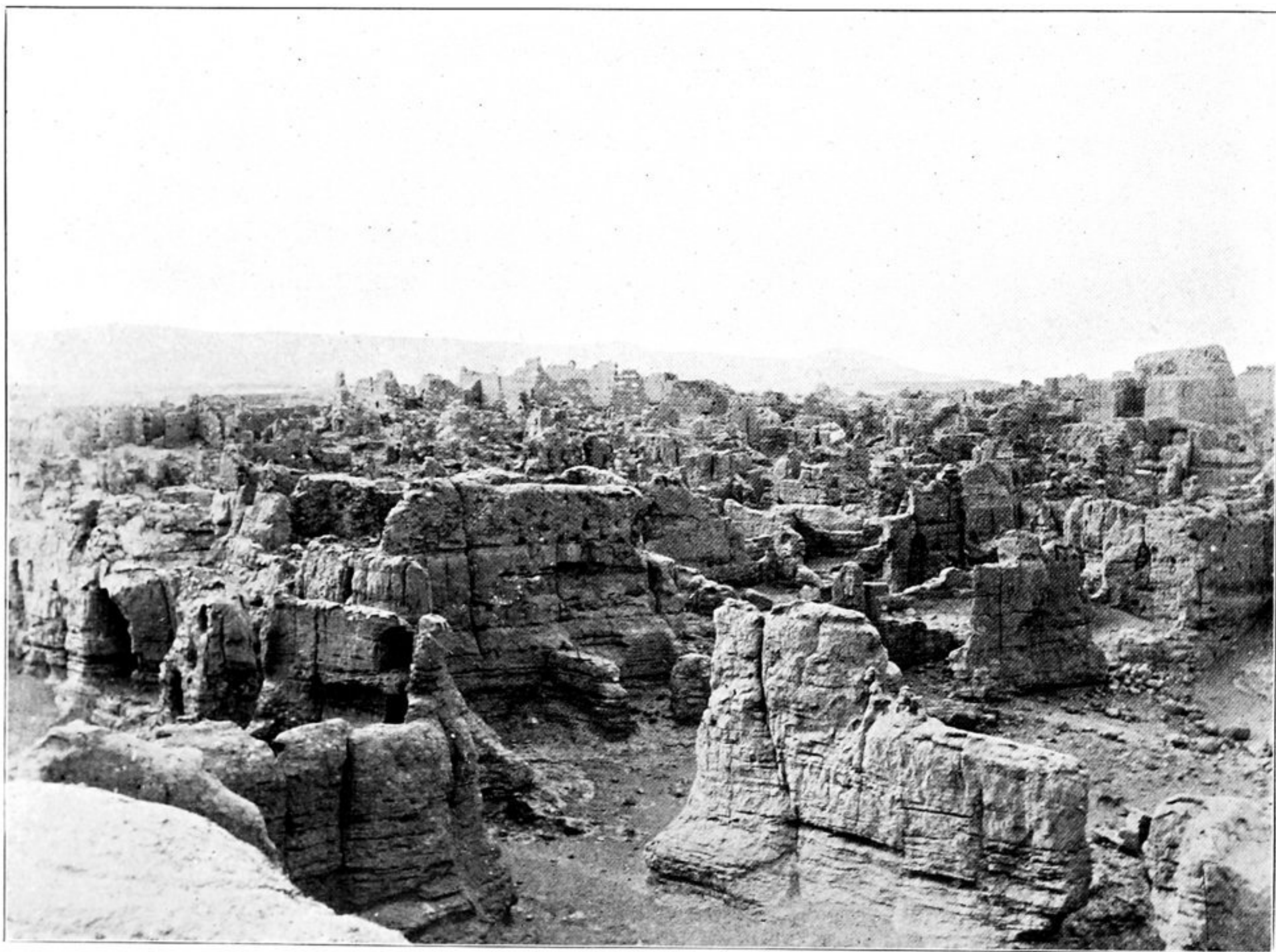




263. CENTRAL MAIN STREET IN RUINED TOWN OF YAR-KHOTO, TURFAN, SEEN FROM NORTH.

The high structure in foreground is a temple ruin. On the left the trees of Yar-khoto village, beyond the eastern 'Yar,' show in the distance.



264. PORTION OF RUINED TOWN OF YAR-KHOTO SEEN FROM NEAR ITS SOUTH END.