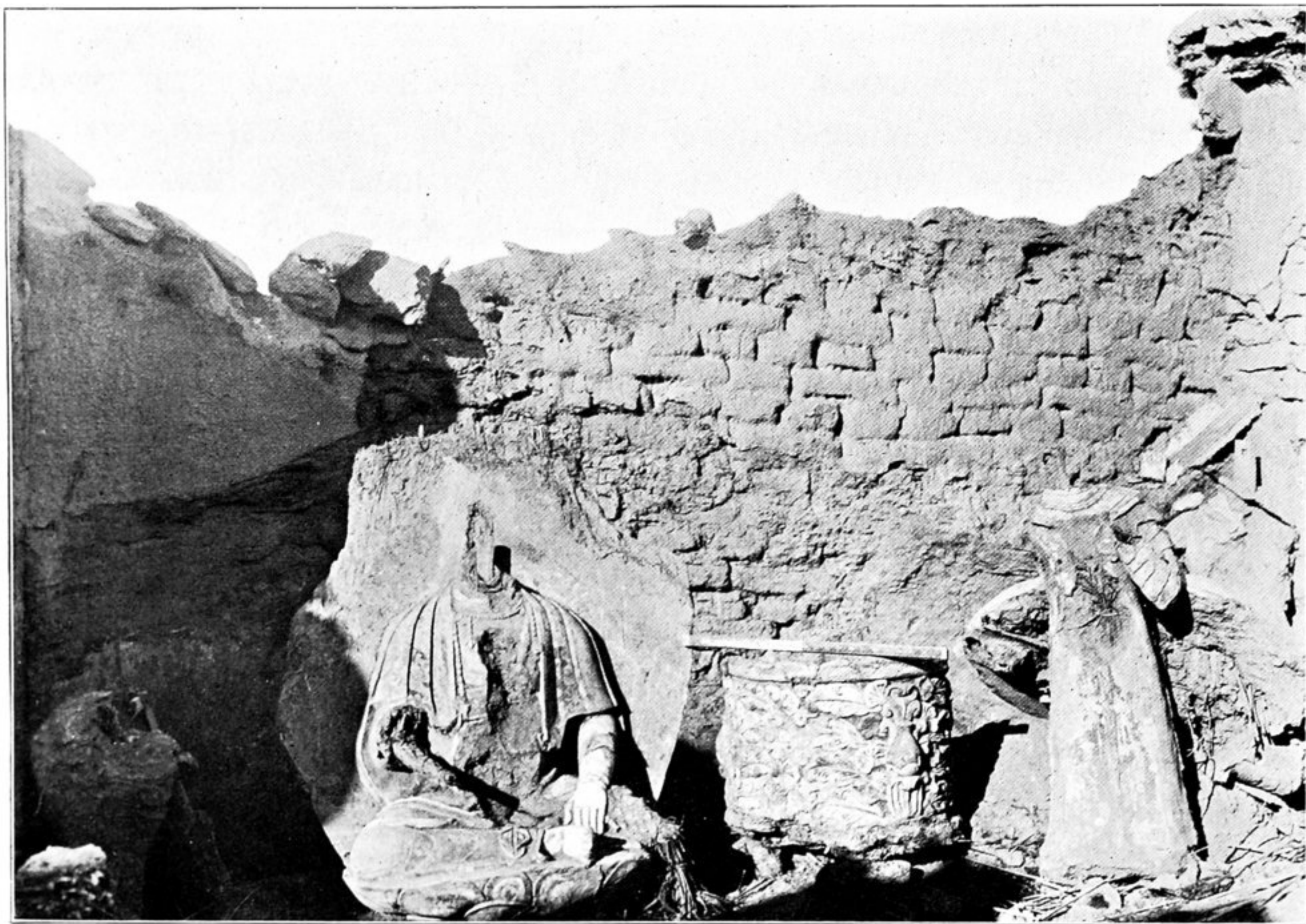


265. MY CAMP AT THE RUINS OF 'MING-OI,' NEAR SHIKCHIN, KARA-SHAHR.
The photograph shows the western and middle lines of ruined shrines as seen from north. Hoar-frost covers scrub.



266. INTERIOR OF RUINED BUDDHIST CELLA MI. XVIII., AT 'MING-OI' SITE,
KARA-SHAHR.

The richly painted stucco image of a seated Bodhisattva, like the fine image-base by its side, were found up-turned. The shrine was once vaulted.