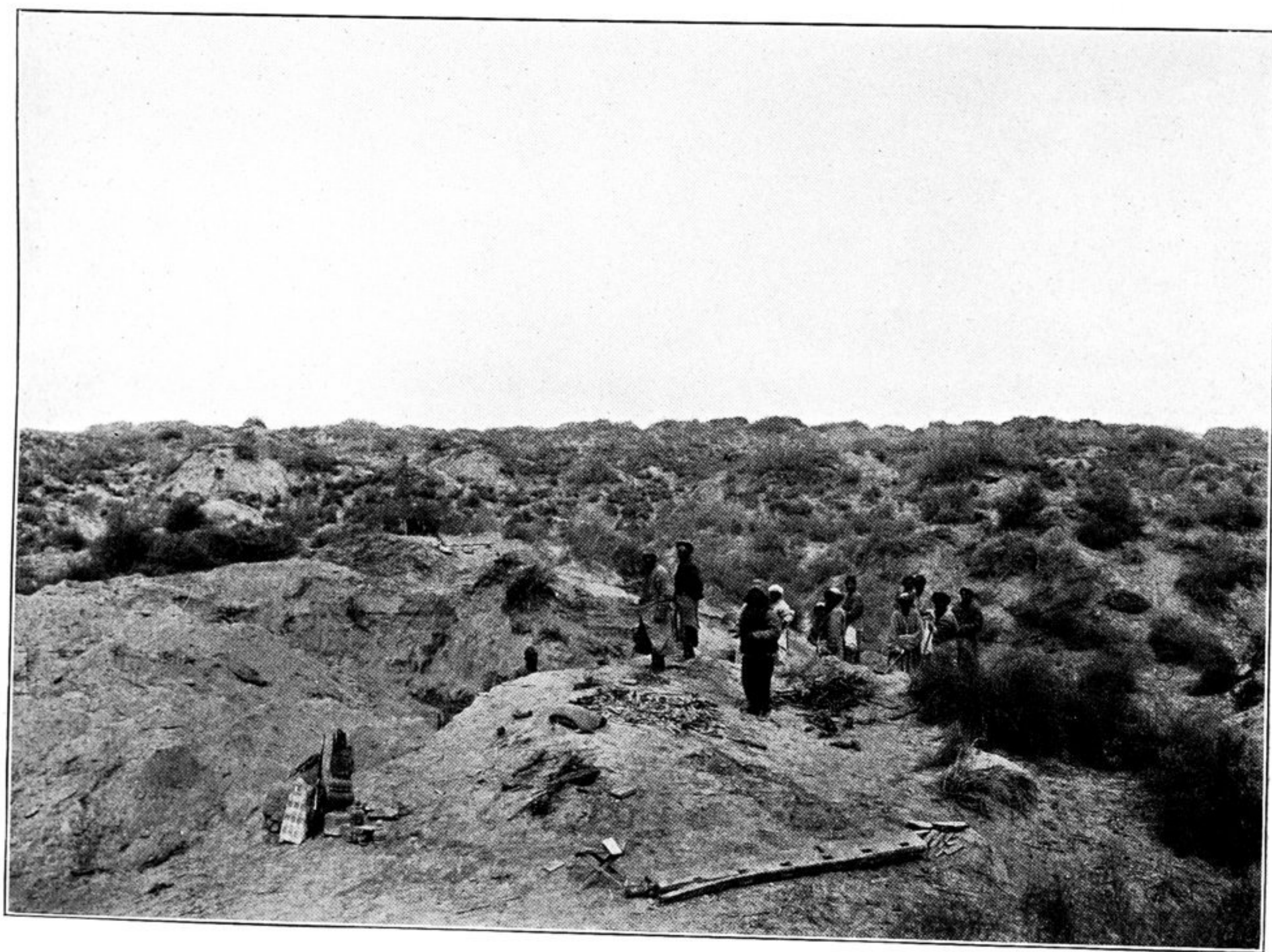




294. BUDDHIST SHRINE ON TAMARISK CONE AT SITE OF FARHAD-BEG-YAILAKI,
IN COURSE OF EXCAVATION.



295. REMAINS OF BUDDHIST SHRINE AT KARA-YANTAK, NEAR DOMOKO, IN COURSE
OF EXCAVATION.