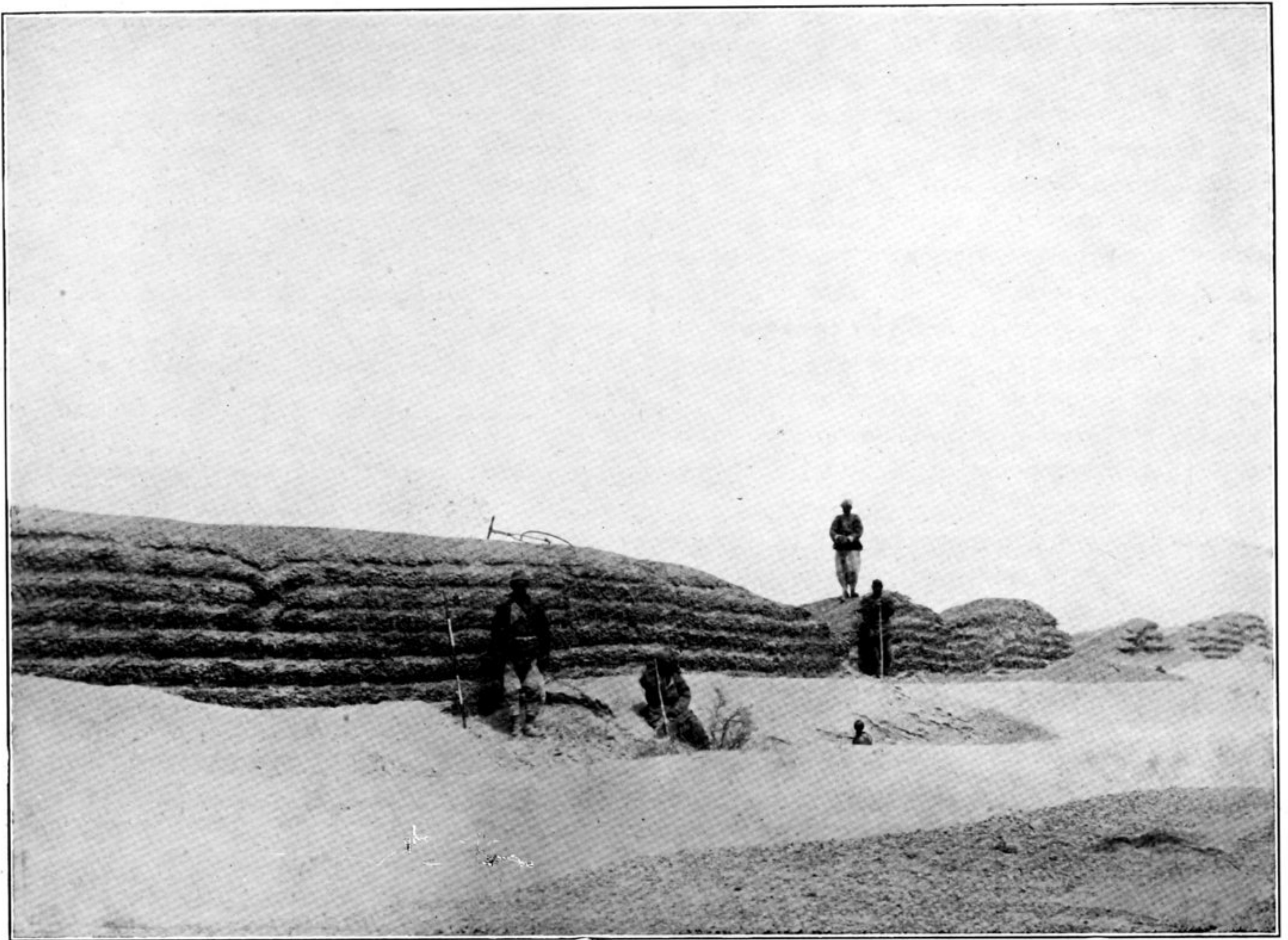


157. FACE OF ANCIENT BORDER WALL, EAST OF WATCH-TOWER T. XXXV, TUN-HUANG LINES, SHOWING CONSTRUCTION WITH ALTERNATE LAYERS OF STAMPED CLAY AND FASCINES.



158. REMAINS OF ANCIENT BORDER WALL, BETWEEN LOW DUNES, EAST OF WATCH-TOWER T. XXXV, TUN-HUANG LINES.

Surface of low gravel mound is marked by Chinese labourer standing on left.