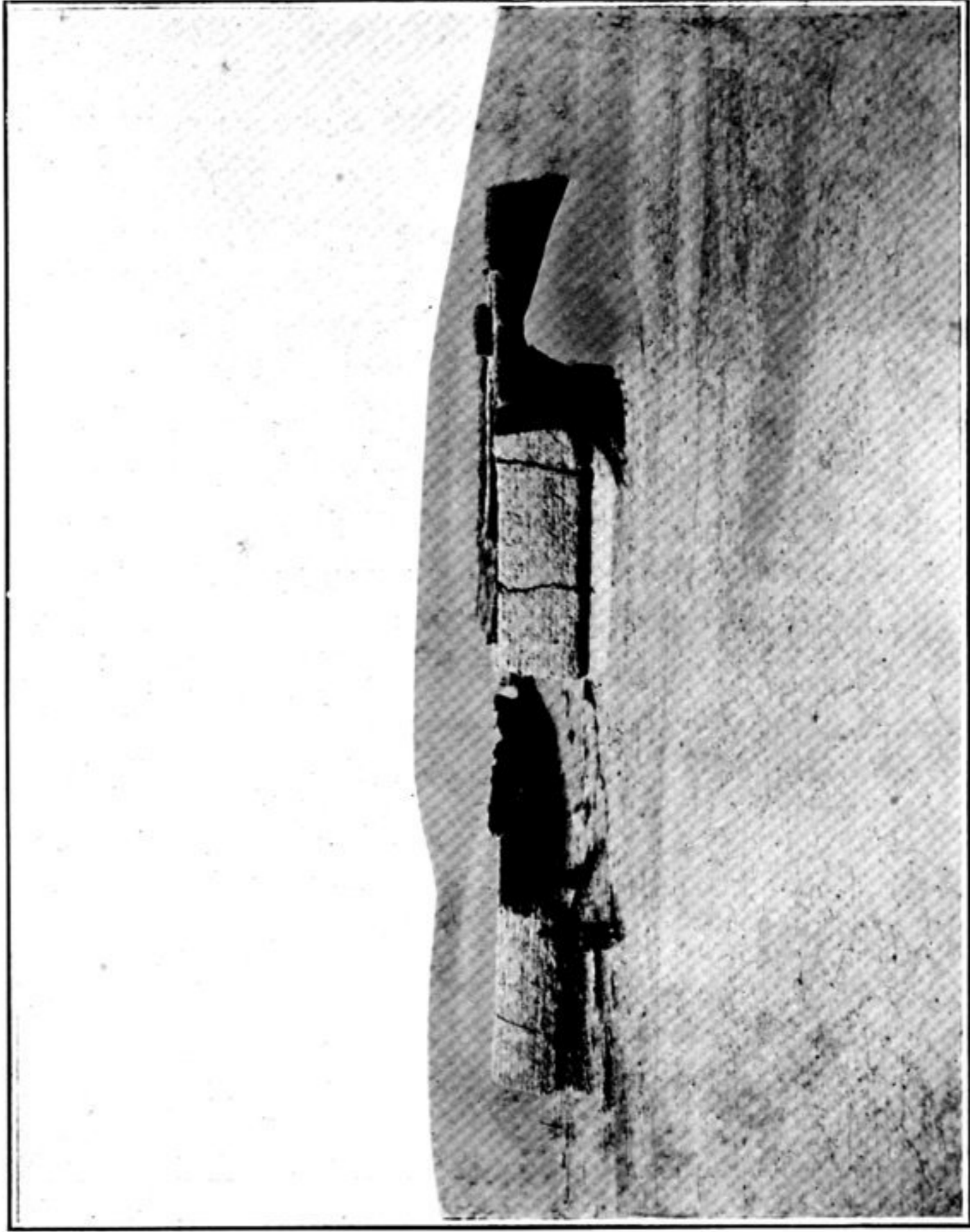
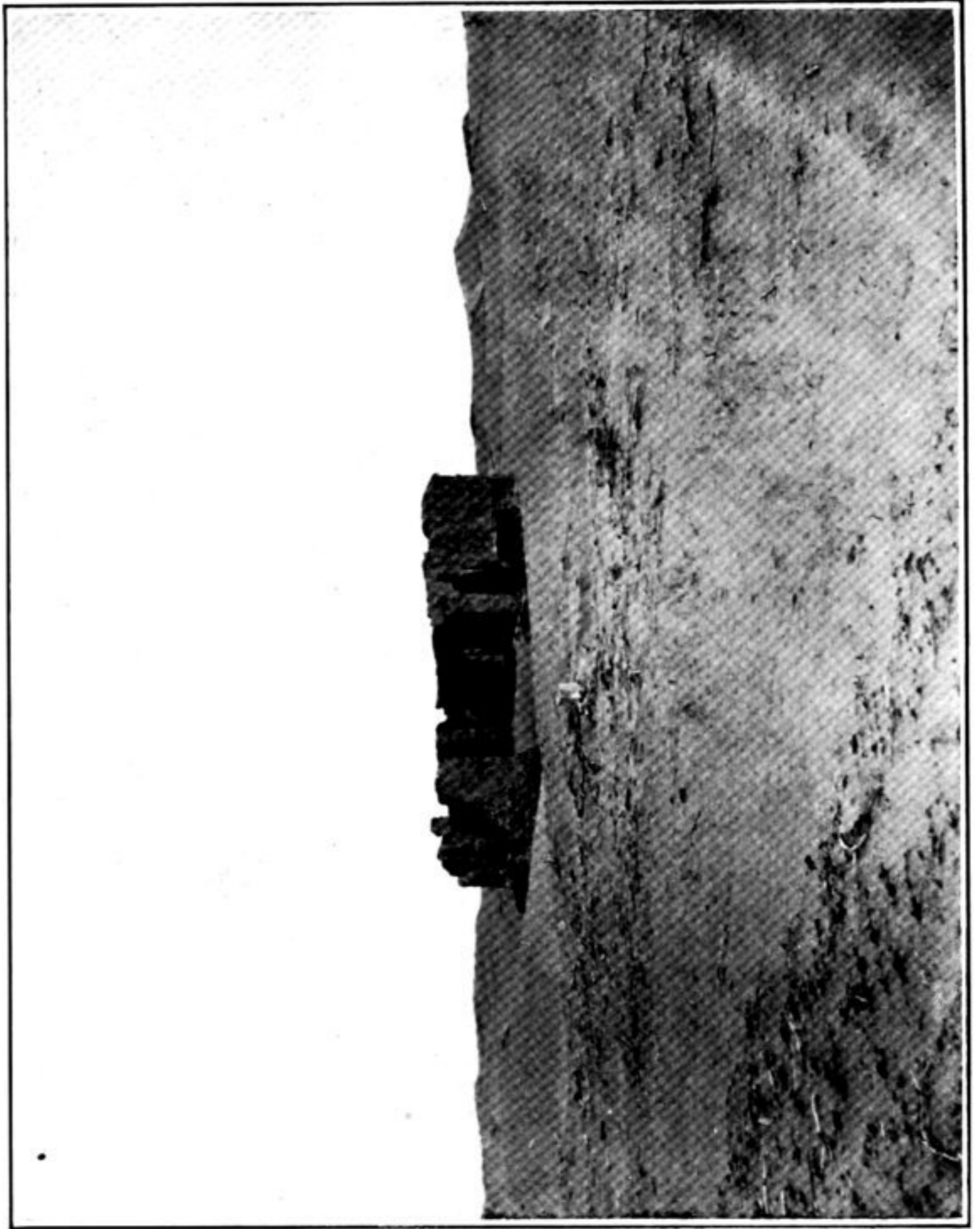


161. REMNANT OF ANCIENT BORDER WALL NEAR WATCH-TOWER T. XXVII,
TUN-HUANG LIMES.



162. LAST RUINED FARM OF KUAN-TSOU, NORTH OF NAN-HU.



163. ABANDONED HOMESTEAD OF KUAN-TSOU, NORTH OF NAN-HU.



164. REMAINS OF FARM AND FENCED ARBOUR, ABANDONED TO DESERT,
AT KUAN-TSOU, N. OF NAN-HU.