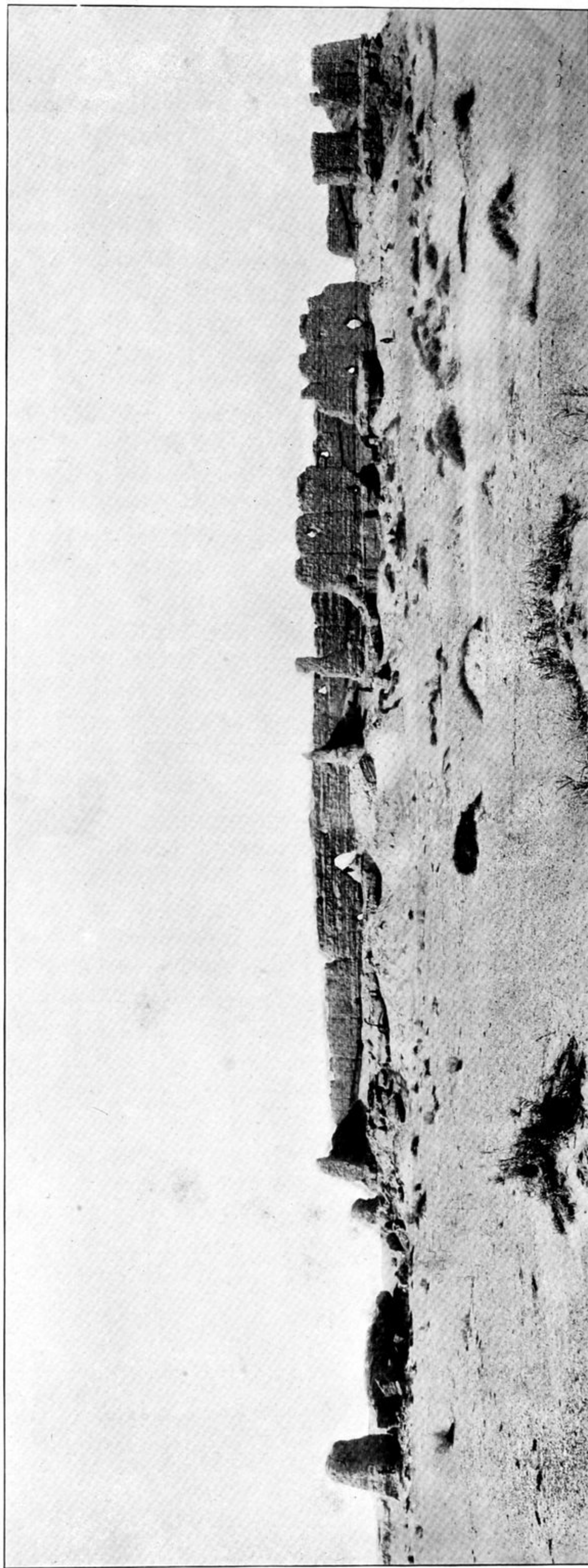




185. RUINED TOWN OF SO-YANG-CH'ENG, SEEN FROM NORTH-EAST, WITH INNER EAST WALL IN FOREGROUND AND TOWER OF NORTH-WEST CORNER BASTION IN DISTANCE ON RIGHT.



186. RUINS OF ANCIENT MAGAZINE T. XVIII, ON TUN-HUANG LIMES, SEEN FROM SOUTH. On extreme left watch-tower at south-west corner of inner enclosure. The figures of men standing at different points of the structure serve to indicate its size.