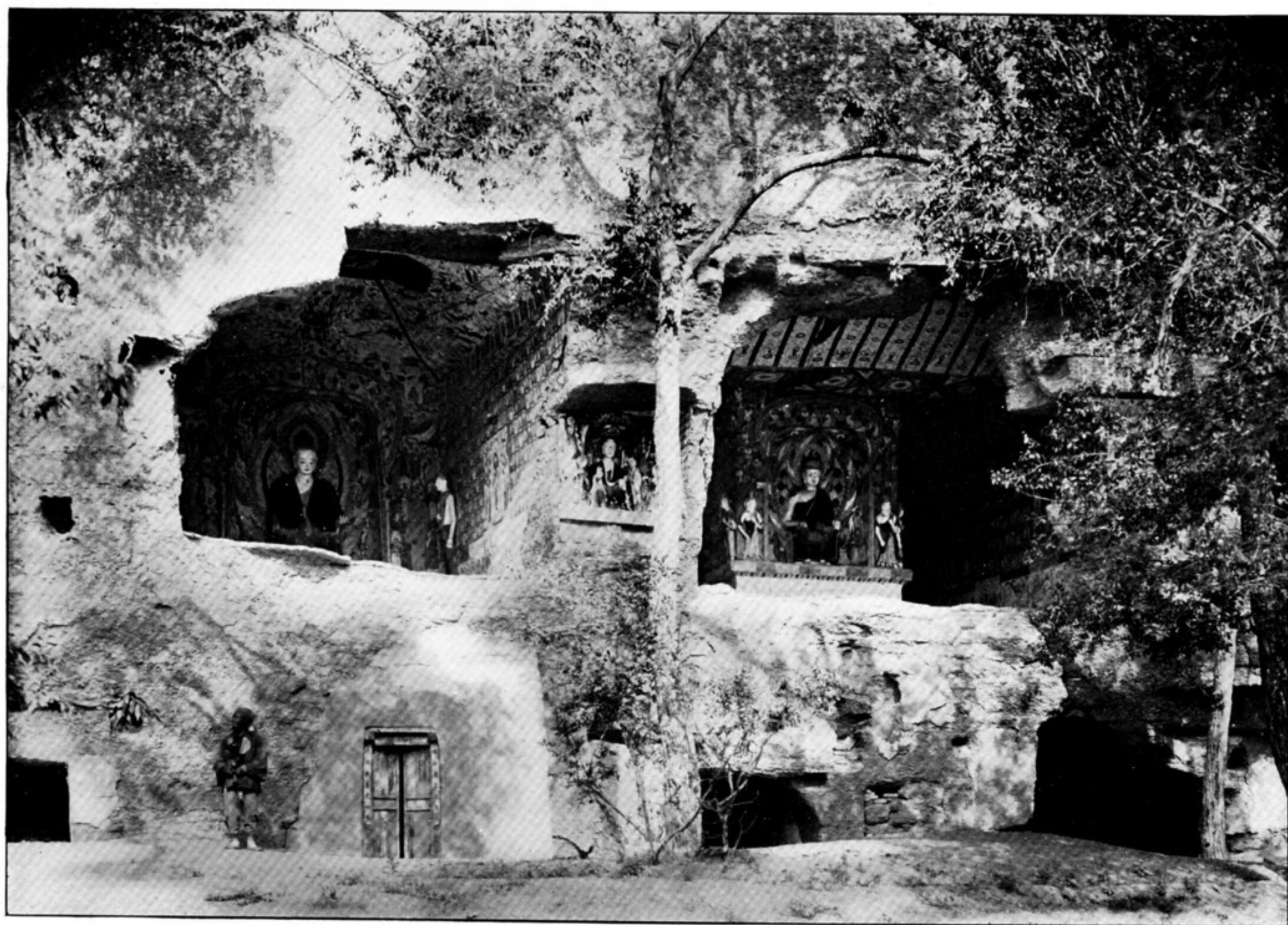




195. CAVE SHRINES ABOVE CH. III, 'CAVES OF THE THOUSAND BUDDHAS', TUN-HUANG.



196. CAVE SHRINES NEAR CH. VIII, 'CAVES OF THE THOUSAND BUDDHAS', TUN-HUANG.
The antechapels and porches of the cellas above have completely disappeared. The stucco images show recent restoration.
Below are seen the porches, partially filled with sand, leading to other cellas.