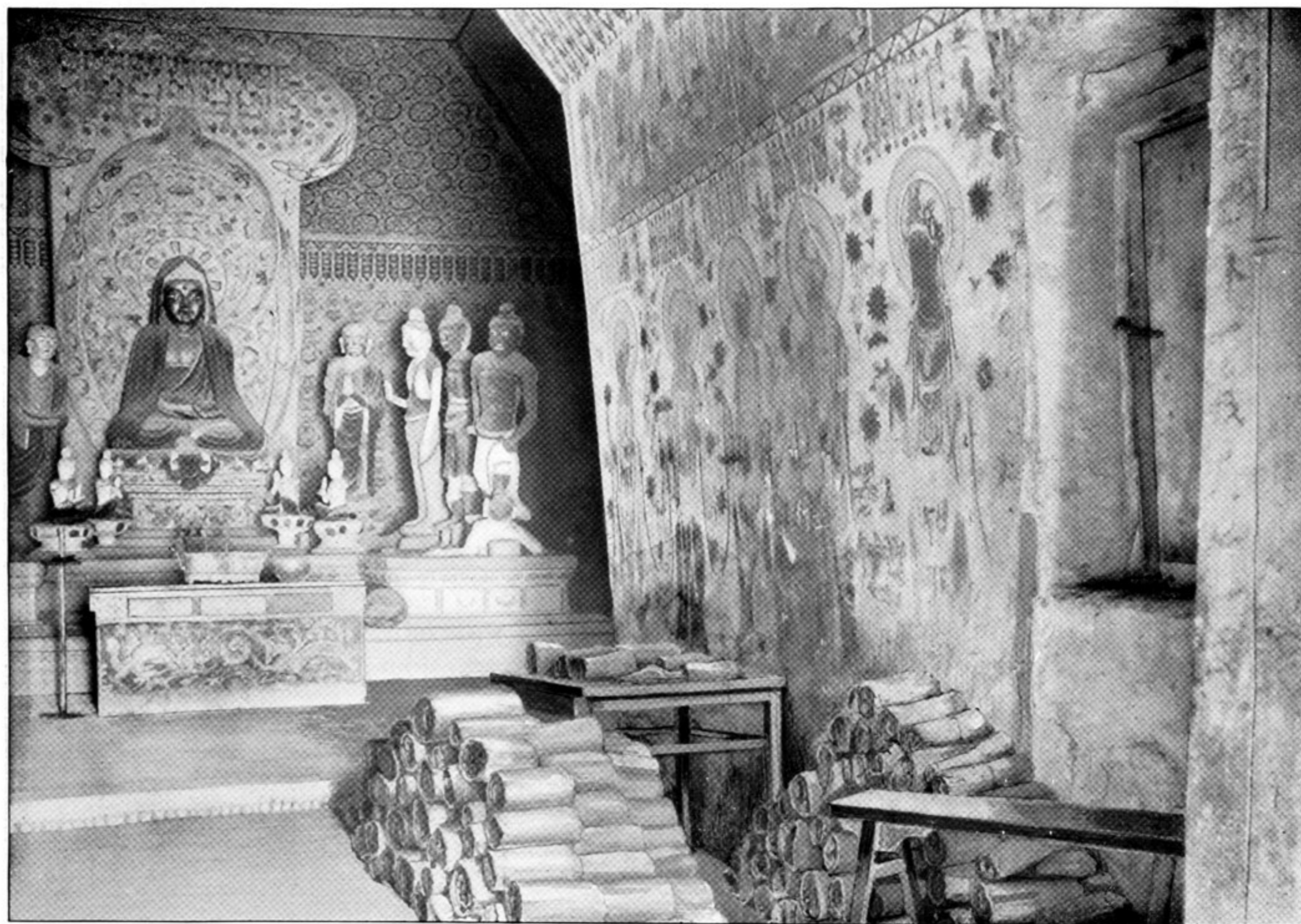


Cave Ch. XII



199. ROWS OF SMALL CAVE SHRINES ADJOINING CAVE CH. XII NORTHWARD, CH' IEN-FO-TUNG, TUN-HUANG.
On extreme left, portion of middle porch, giving light to cave of colossal seated Buddha



200. CELLA AND PORCH OF CAVE TEMPLE CH. I, PARTIALLY RESTORED, CH' IEN-FO-TUNG, TUN-HUANG.
On extreme right the locked door leading to rock-cut chapel, previously walled-up, where the hidden deposit of MSS., etc. was discovered.