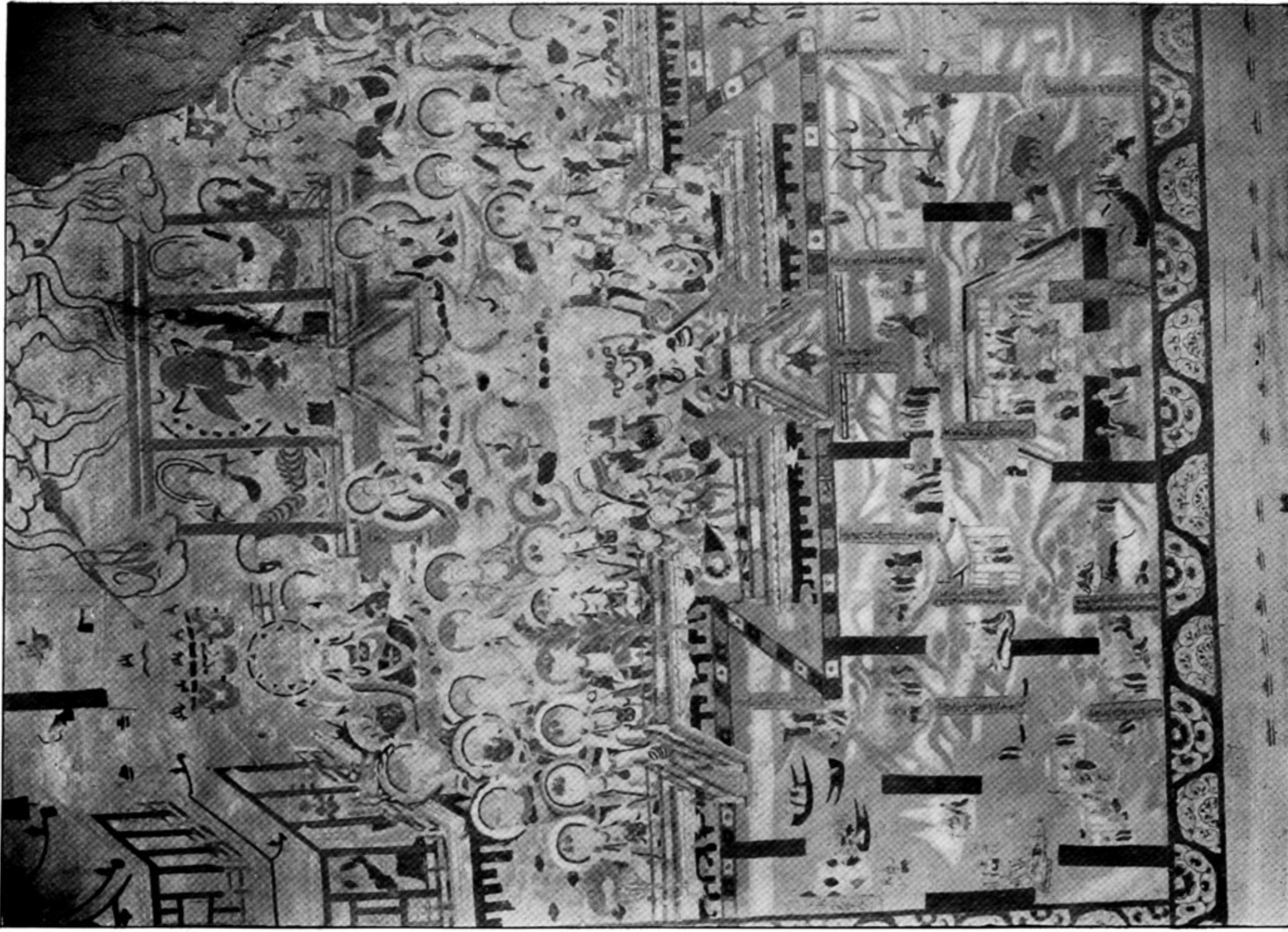




201. STUCCO IMAGE OF COLOSSAL SEATED BUDDHA, WITH PAINTED HALO AND VESICA IN RELIEVO AND TEMPERA PAINTINGS ON ROCK-CARVED SCREEN BEHIND, IN CELLA OF CAVE CH. II, CH'EN-FO-TUNG.



202. PANEL PAINTED IN TEMPERA, SHOWING SUKHAVATI SCENE ABOVE AND JĀTAKA SCENE BELOW, ON SOUTH WALL OF CAVE CH. II, CH'EN-FC-TUNG.