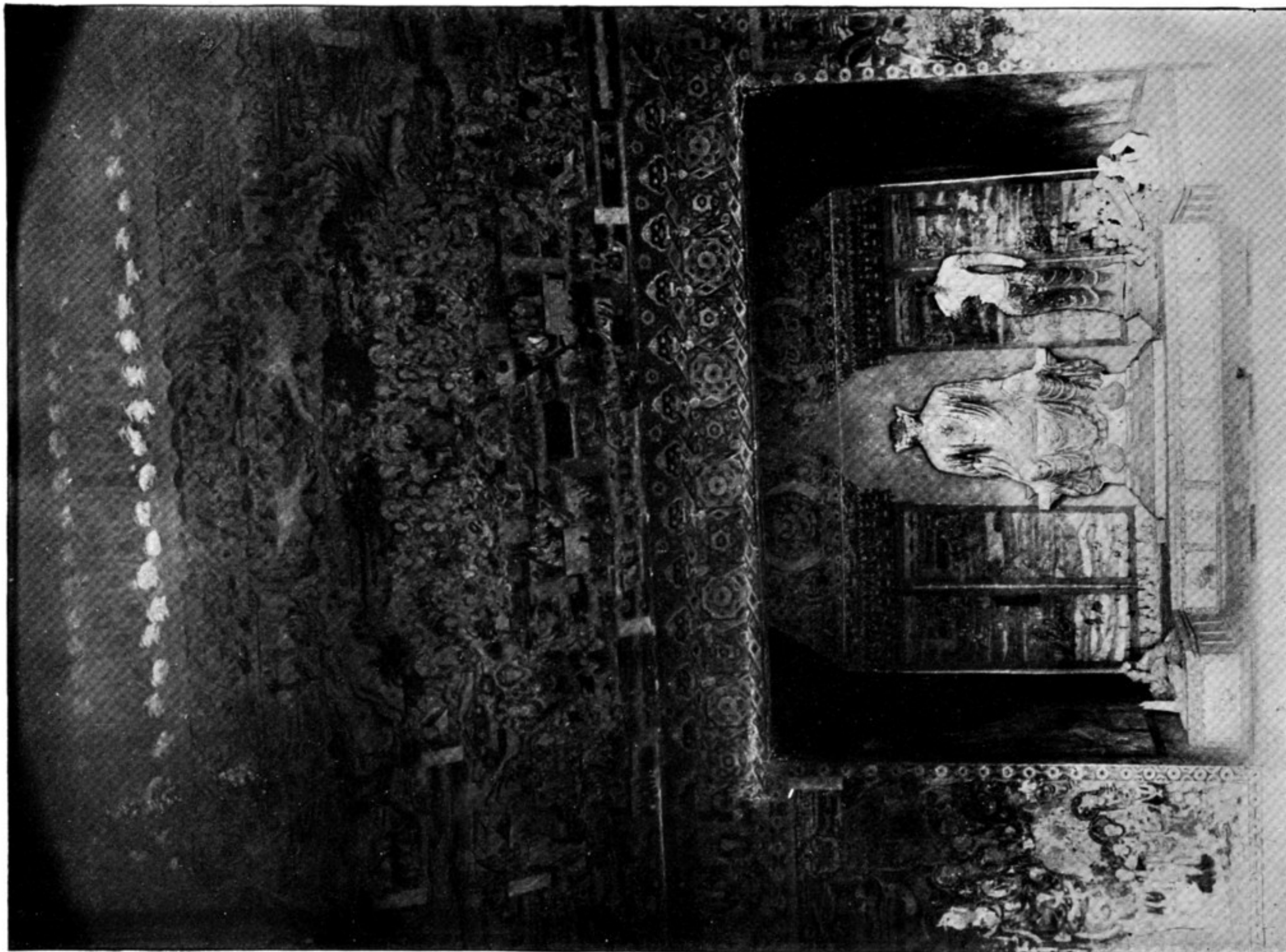




230. TEMPERA PAINTINGS IN NORTH-WEST CORNER OF CELLA IN CAVE CH. XII, CH'EN-FO-TUNG.



229. STUCCO IMAGE OF SEATED BUDDHA IN ALCOVE, AND TEMPERA PAINTINGS ON WEST WALL AND CEILING, OF CAVE CH. XII, CH'EN-FO-TUNG.