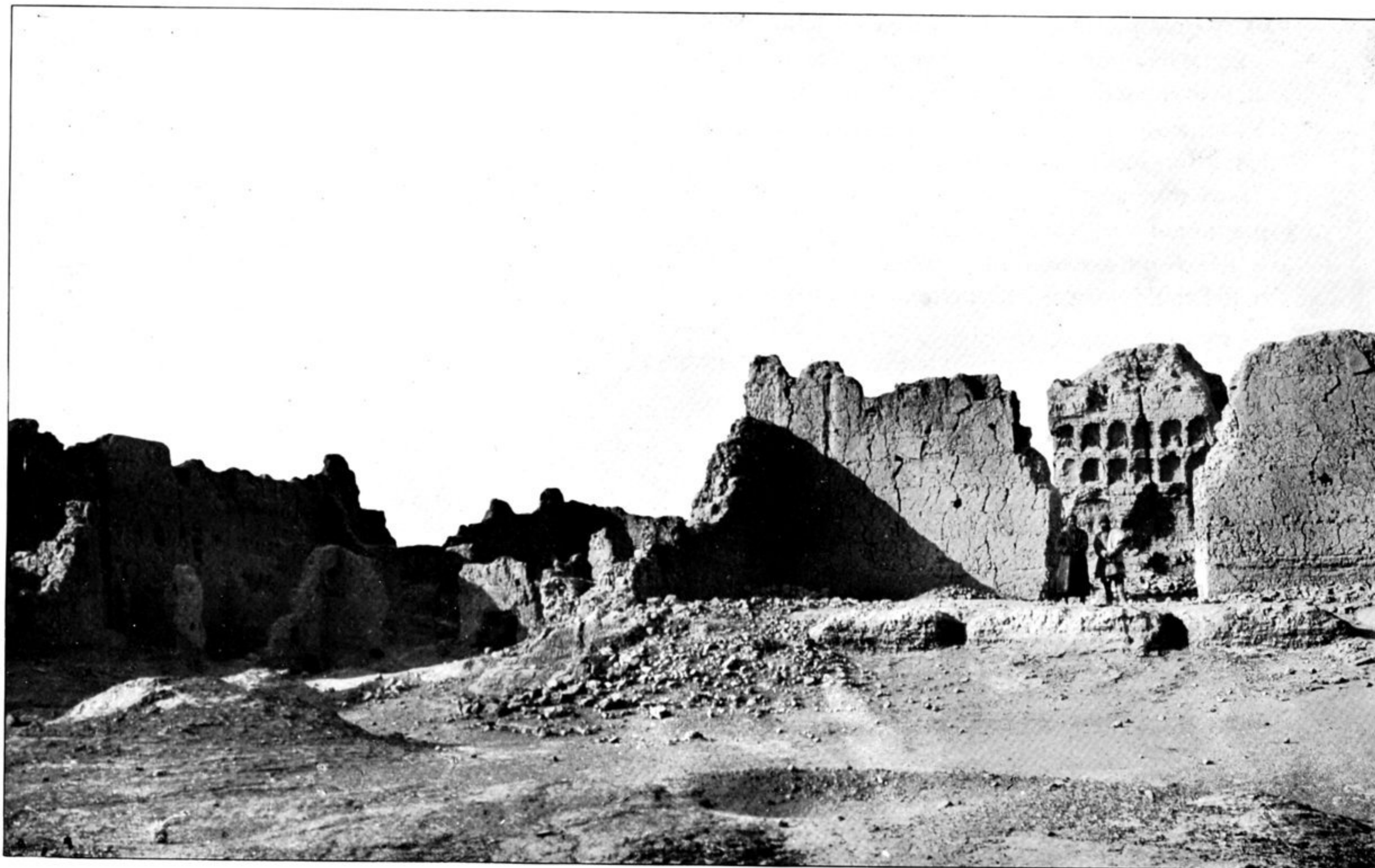


277. RUINS OF 'KHĀN'S PALACE', WITHIN RUINED TOWN OF KARA-KHOJA, TURFĀN, SEEN FROM SOUTH-WEST.



278. CENTRAL TEMPLE RUIN AND PART OF ENCLOSING COURT OF LARGE BUDDHIST VIHĀRA, YĀR-KHOTO, SEEN FROM SOUTH.