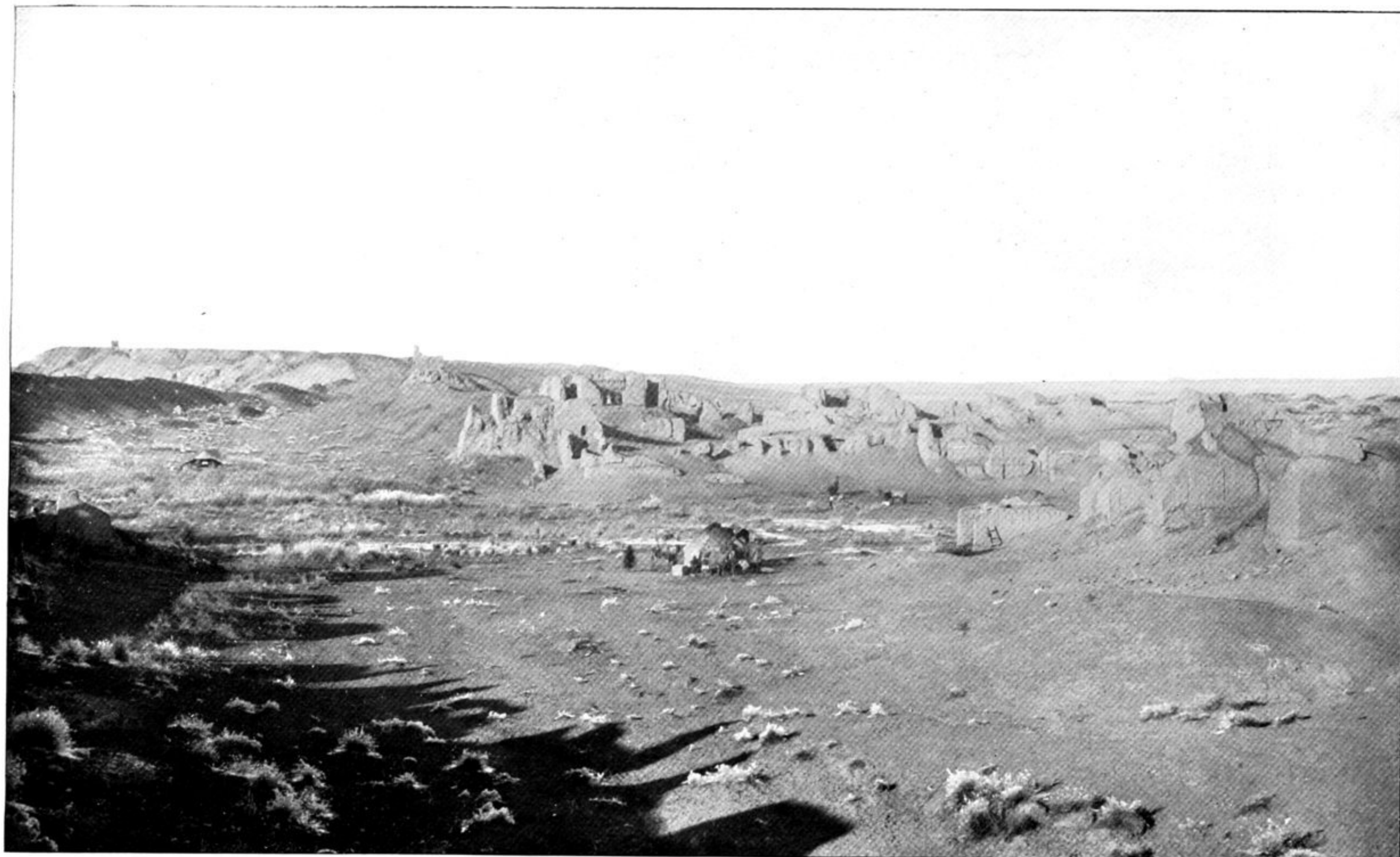


A



285. RUINED SHRINES IN NORTH-WEST PORTION OF 'MING-OI' SITE, SHŌRCHUK, WITH END OF GROUP II, SEEN FROM SOUTH.

Ancient watch-tower above cave temples marked by A.



286. MAIN GROUP OF CAVE TEMPLES, WITH 'MING-OI' SITE, SHŌRCHUK, IN DISTANCE, SEEN FROM WEST.