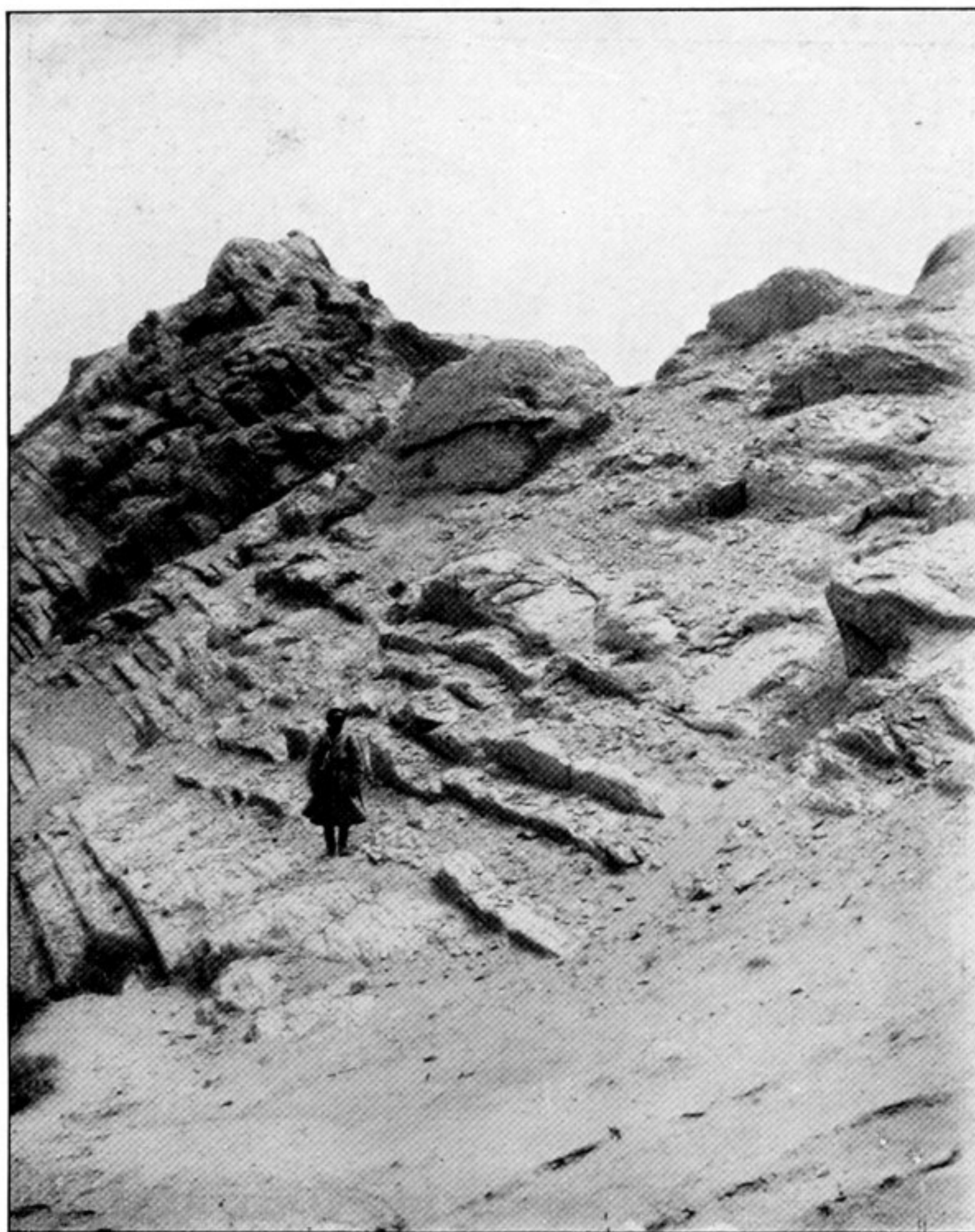
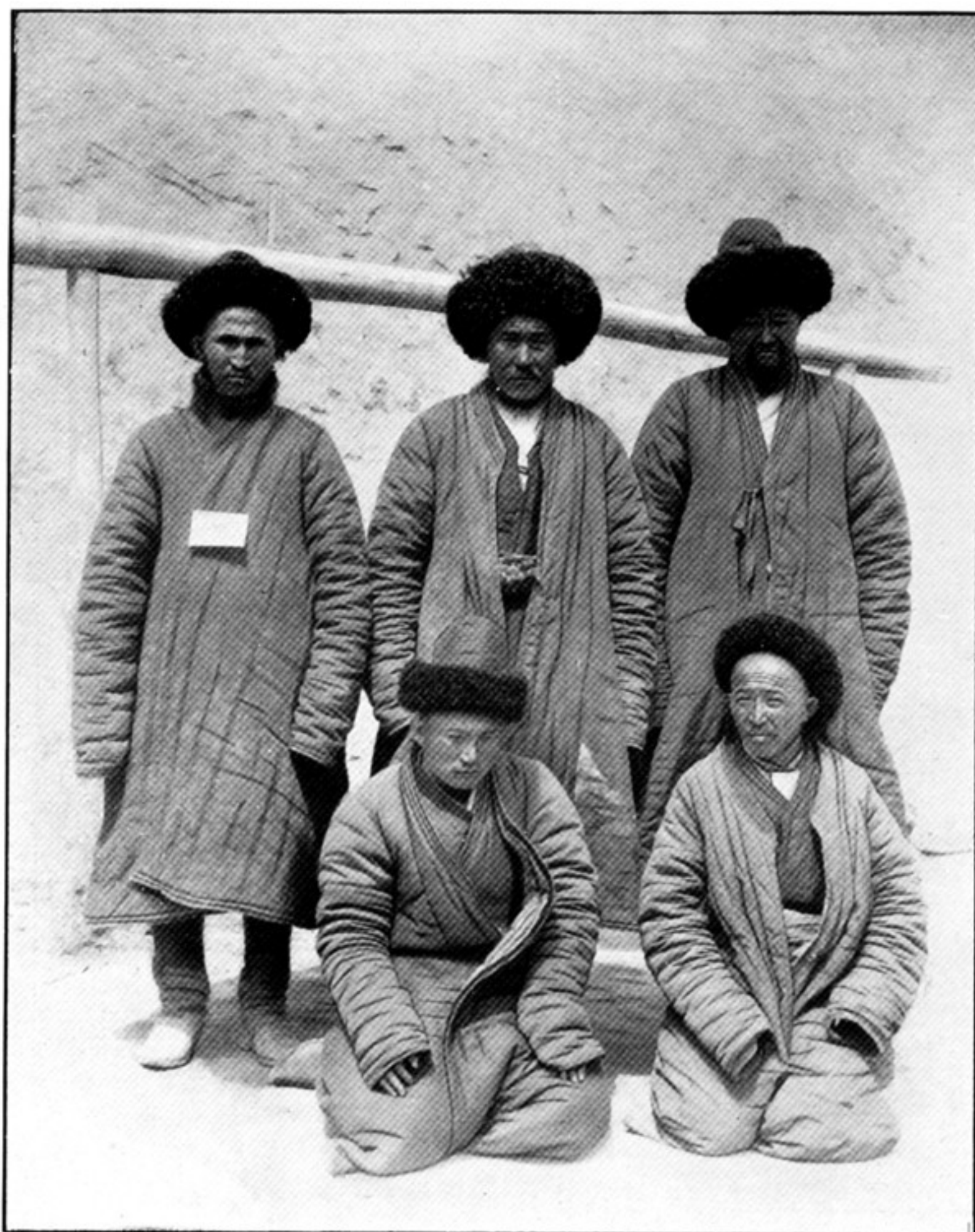




331. NORTH BASTION OF RUINED FORT, MAZAR-TĀGH, SEEN FROM OUTER COURT v.



332. REMAINS OF ANCIENT WATCHTOWER ON ARACH HILL, NORTH-EAST OF MARĀL-BĀSHI.



333. GROUP OF KIRGHIZ, ANTHROPOMETRICALLY EXAMINED AT UCH-TURFĀN.



334. REFUSE LAYERS WITH ANCIENT RECORDS, ON N.E. SLOPE BELOW MAZĀR-TĀGH FORT, IN COURSE OF EXCAVATION.