

Aquarell von Hermann de Schlagintweit, Juni 1856. LEIPZIG: F. A. Brockhaus. LONDON: Trübner & Co. The Copyright is reserved. Chromo-lithograph by Storch & Kramer, Berlin.

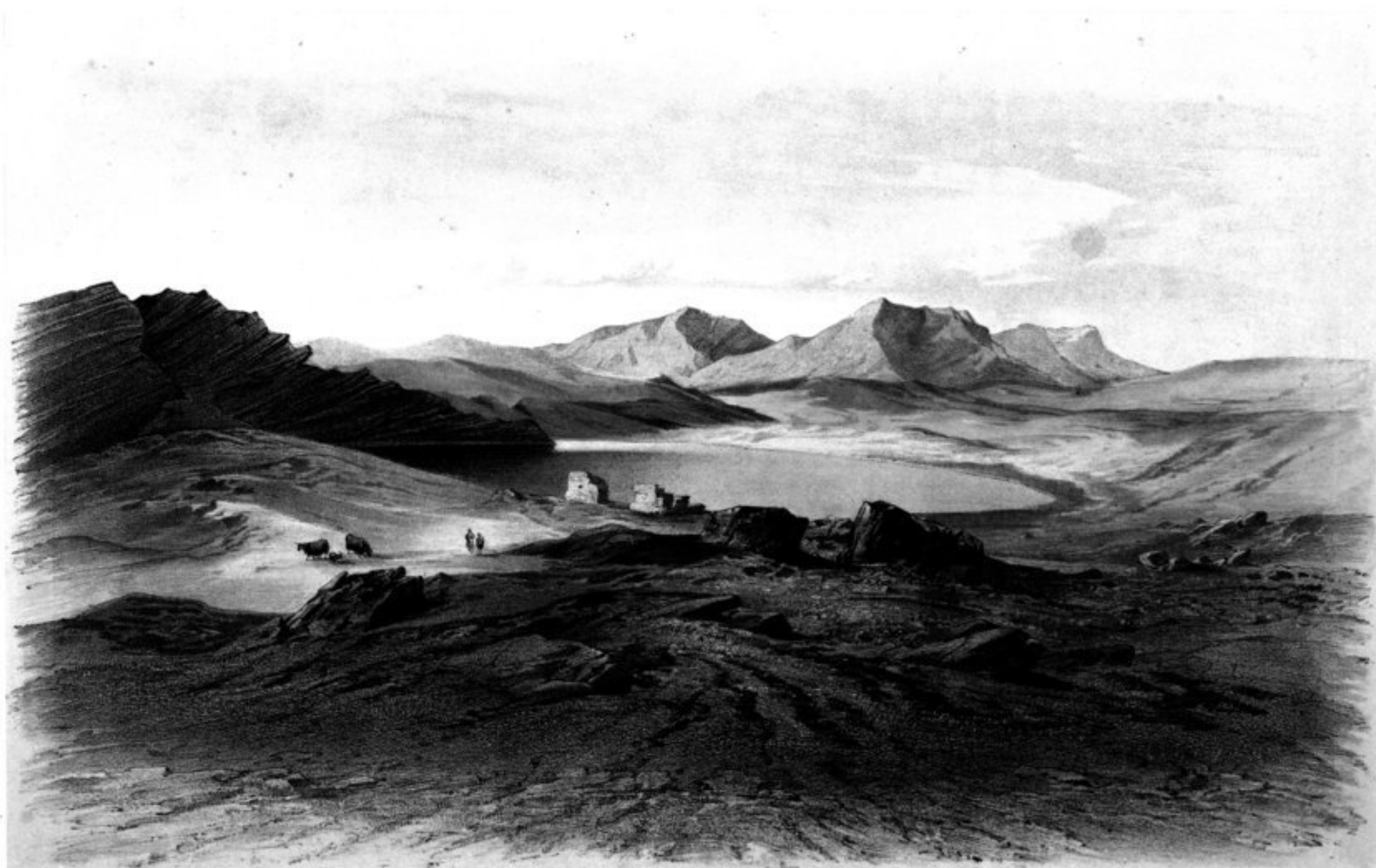
The Salt Lake Tso Mitbal, in Pangkong, Tibet.

Lat. North: 33° 25'

Long East of Green: 78° 40'

Height 4107 Engl. feet.

Well defined marks of successive deposits, corresponding to the gradual evaporation of the water, surround the shores of the lake, whose former level is still visible to the right of the mountain in the centre. On the left of the same mountain lies the way to Chösel. In the foreground is encamped a Tibetan salt trader with his flock of sheep.



Aquarell von Hermann de Schlagintweit, Juni 1856. LEIPZIG: F. A. Brockhaus. LONDON: Trübner & Co. The Copyright is reserved. Chromo-lithograph by Storch & Kramer, Berlin.

The Salt Lake Tso Gam, in Eastern Ladak, Tibet.

Lat. North: 33° 10'

Long East of Green: 78° 34'

Height 4330 Engl. feet.

Originally the water reached the well marked margin, which still defines the height of the former level of the lake. The sandy shores are occasionally mixed with deposits of salt. The small houses in the foreground are the ruins of a former toll-house. The meaning of the word "Gam" is dry, drying up.