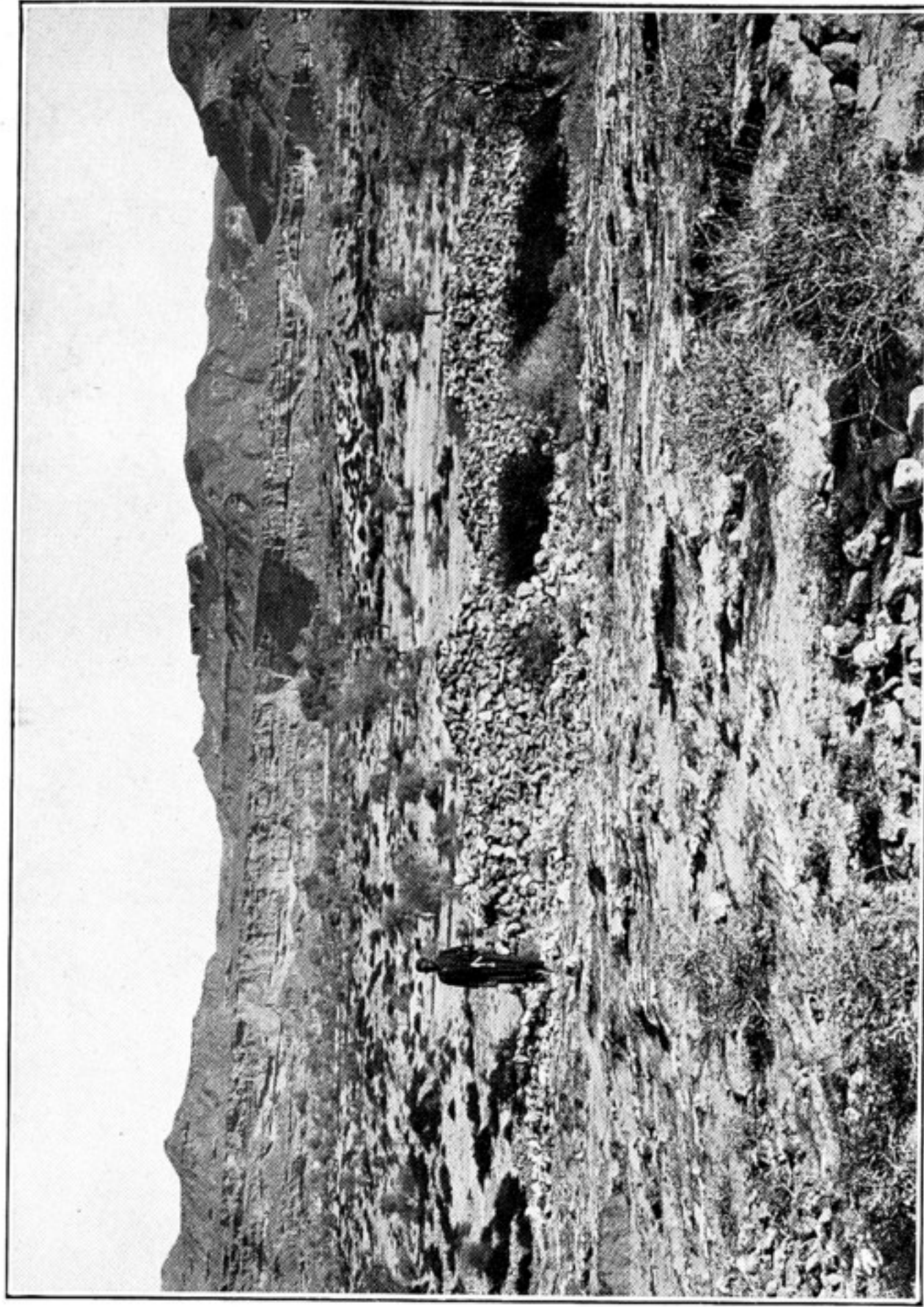
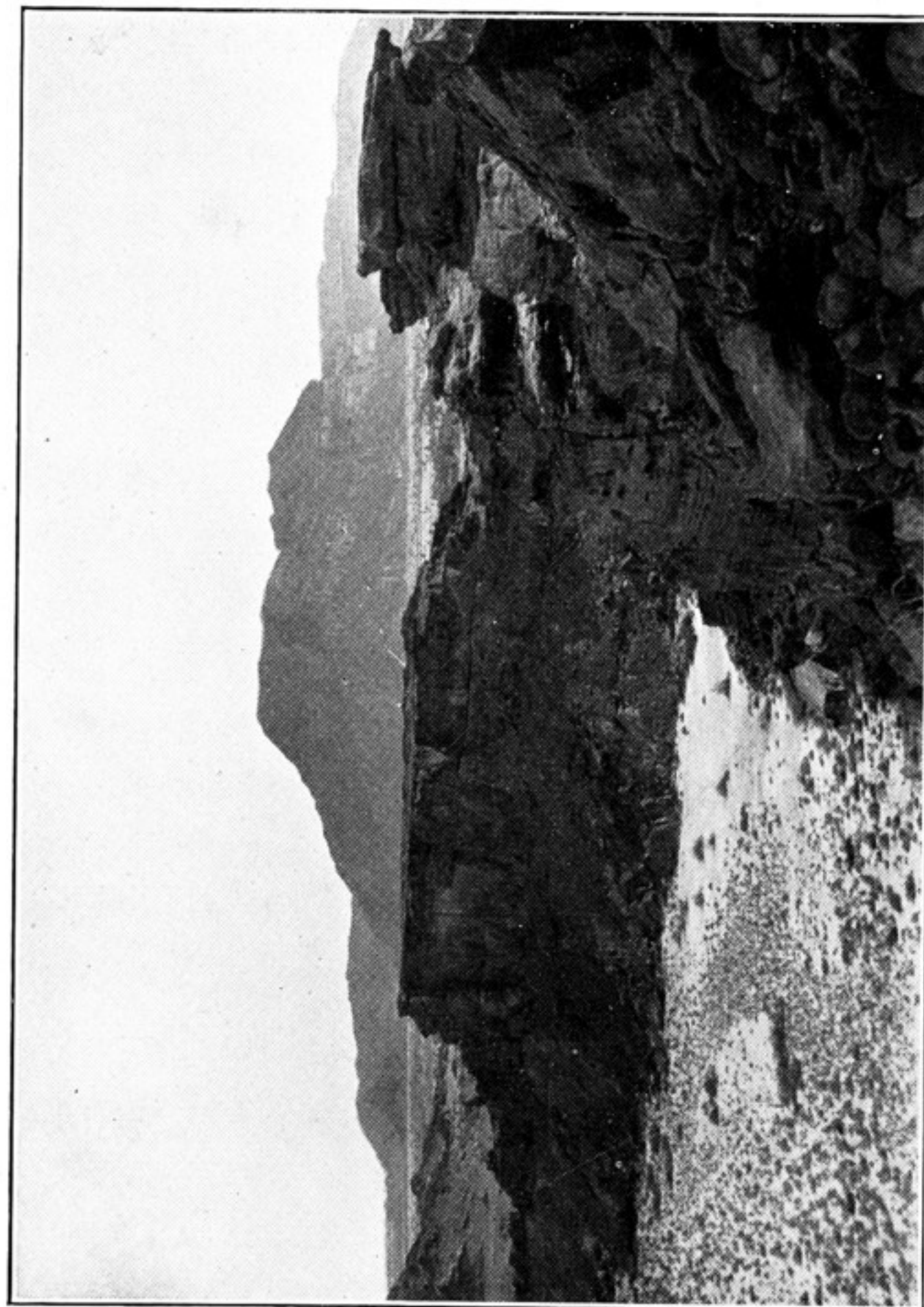


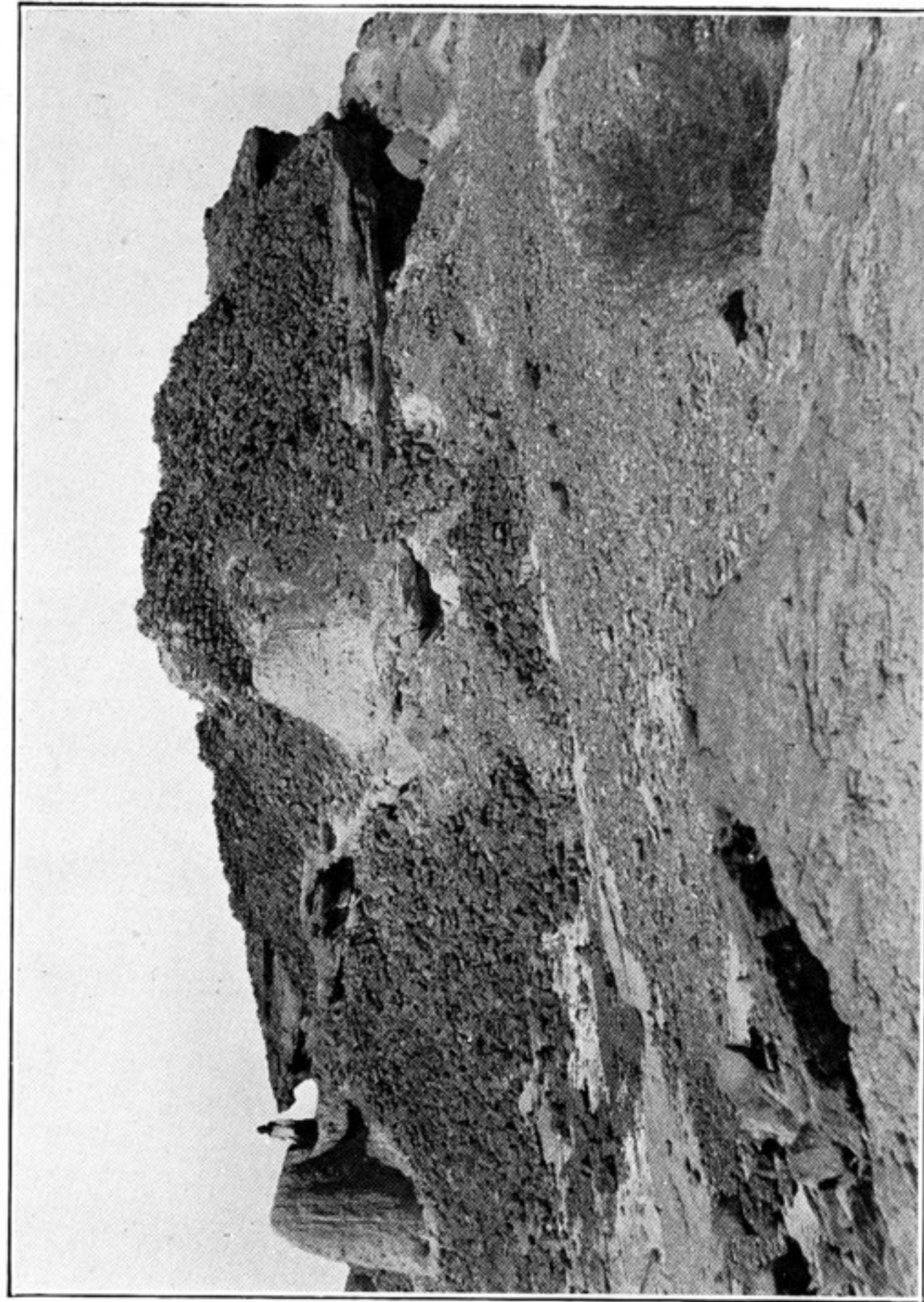
25. MOUTH OF TĪZ VALLEY, SEEN FROM SEA  
Fort of Geh Khān crowns hill on left



26. REMAINS OF RUINED STRUCTURE ABOVE ZERĀBĀD, TĪZ



27. CLIFFS ON N. FACE OF HILL STRONGHOLD OF QALĀT-I-JAMSHĪD, GĪTĪ



28. REMAINS OF RUINED KEEP ON RIDGE OF QALĀT-I-JAMSHĪD