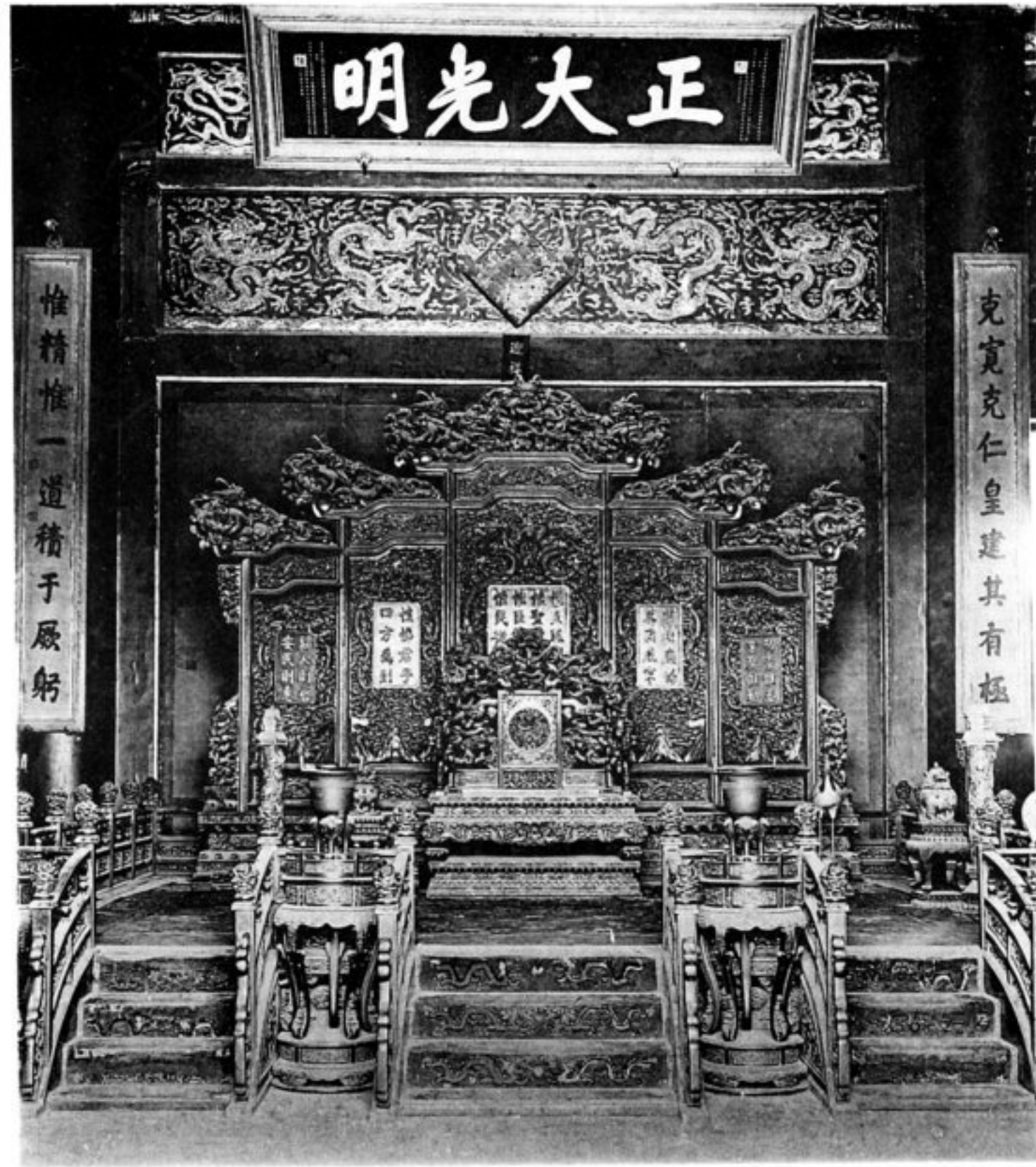


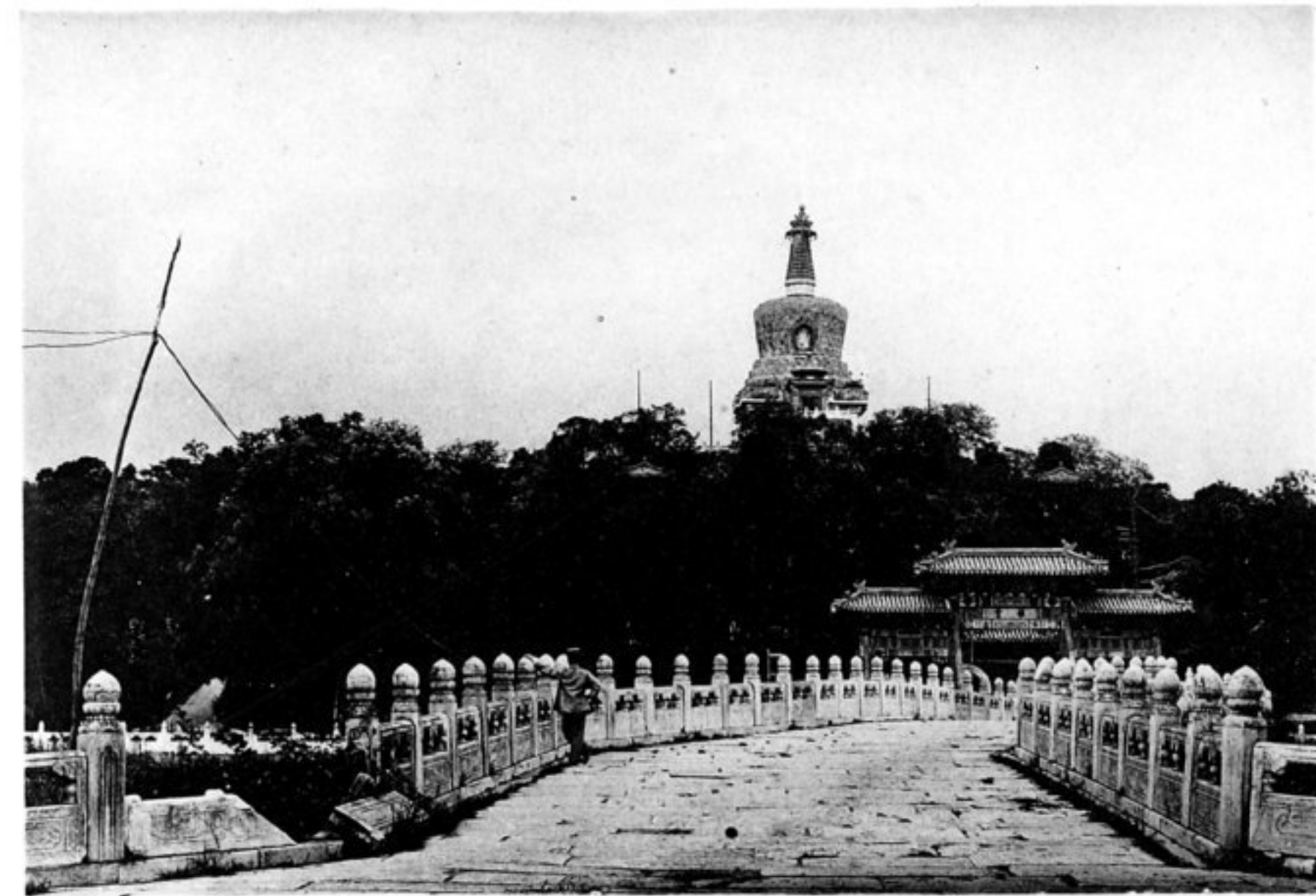
フ奪ヲ目人爛炫輝光欄朱楹金メ極ヲ麗華構結ハ座寶 座玉
The Holy Seat in the Imperial Palace.



リナ殿宮ノ初最ル入ニ城皇リヨ門清大リアニ内城金紫 殿和大 (京北)
(Peking) Ta Ho Palace in the Compound of Tsuchin Palace.



ム極ヲ殿壯シ發映ト磴石階欄朱瓦黃テシニ殿宮ルアニ内城金紫 殿清乾 (京北)
(Peking) Chen Tung Dien, the Palace in the Compound of Tsu-Chin Palace;
the Building is very grandeur.



ハクラム憾モルアノモキ可ス値ニ覽一榭亭閣樓 寺安永 (京北)
ズレサ許ヲ觀進ニ故ガルアニ内城皇
(Peking) Yung-An Temple. the Eridge is built of marble and other
Buildings are all very splendid and grandeur.