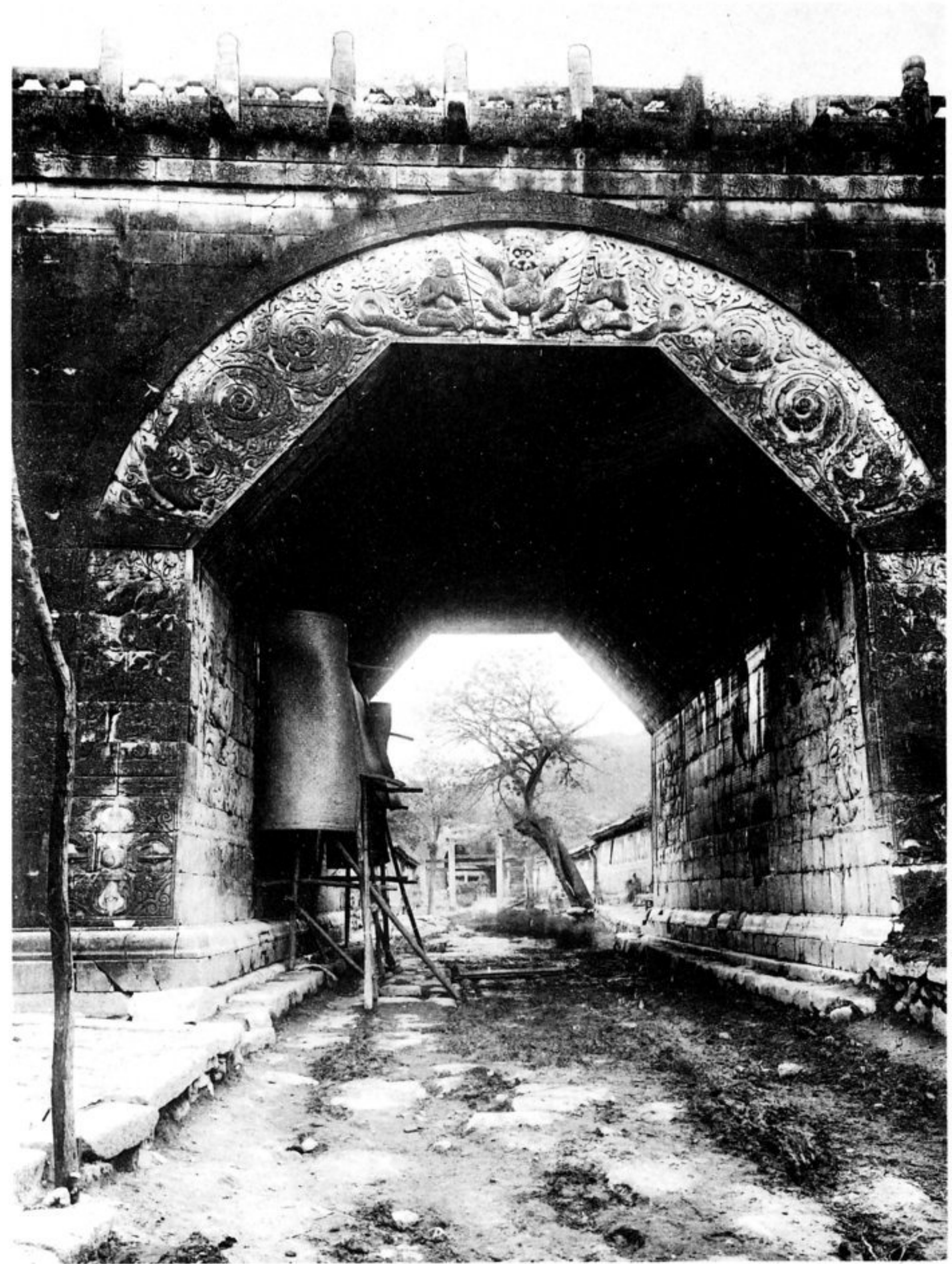




壁内ノ關庸居
Inner view of Chui Yun Kwan.



ア峽山ニ地ノ里清五十北リヨ口南里清六十二南リヨ城長ノ嶺達八ハ（兒坐塔）關庸居
モルケ築テシ用利ヲ隘險ノ此チ即ハ關庸居ズ通ヲ路一ニ僅間ノ其シ立壁山兩リ
五サ厚丈ニサ高リセ架ニ上ノ路大ルズ通ニ北南リア塔街過ニ央中ノ城テシニノ
刻ヲ等字文藏西蒙漢及像佛經佛ニ側兩ハニ部内ノ塔リベ呼ト兒坐塔ヲ之ニ俗丈
モノ前以漢秦ハ築創ノ關リセ動躍起生リ迫ニ真刻妙彫巧ハキ如ノ像佛中就リメ
シ高ニ上史名ノ落不攻難リア屢トコシセ過防ヲ擊突ノ人古蒙來古ク如ノノ
Chui Yun Kwan. 26 Chinese ri in northern direction from the Great Wall of Pa Ta Lin
and suitably situated on a Small Road between two mountains. This is built of stones
and 20 feet high & 50 feet thick, in the interior of this tower. There are many idols of
Buddha, and Mongolian and Thibetan characters are carved on both Sides of the Wall.