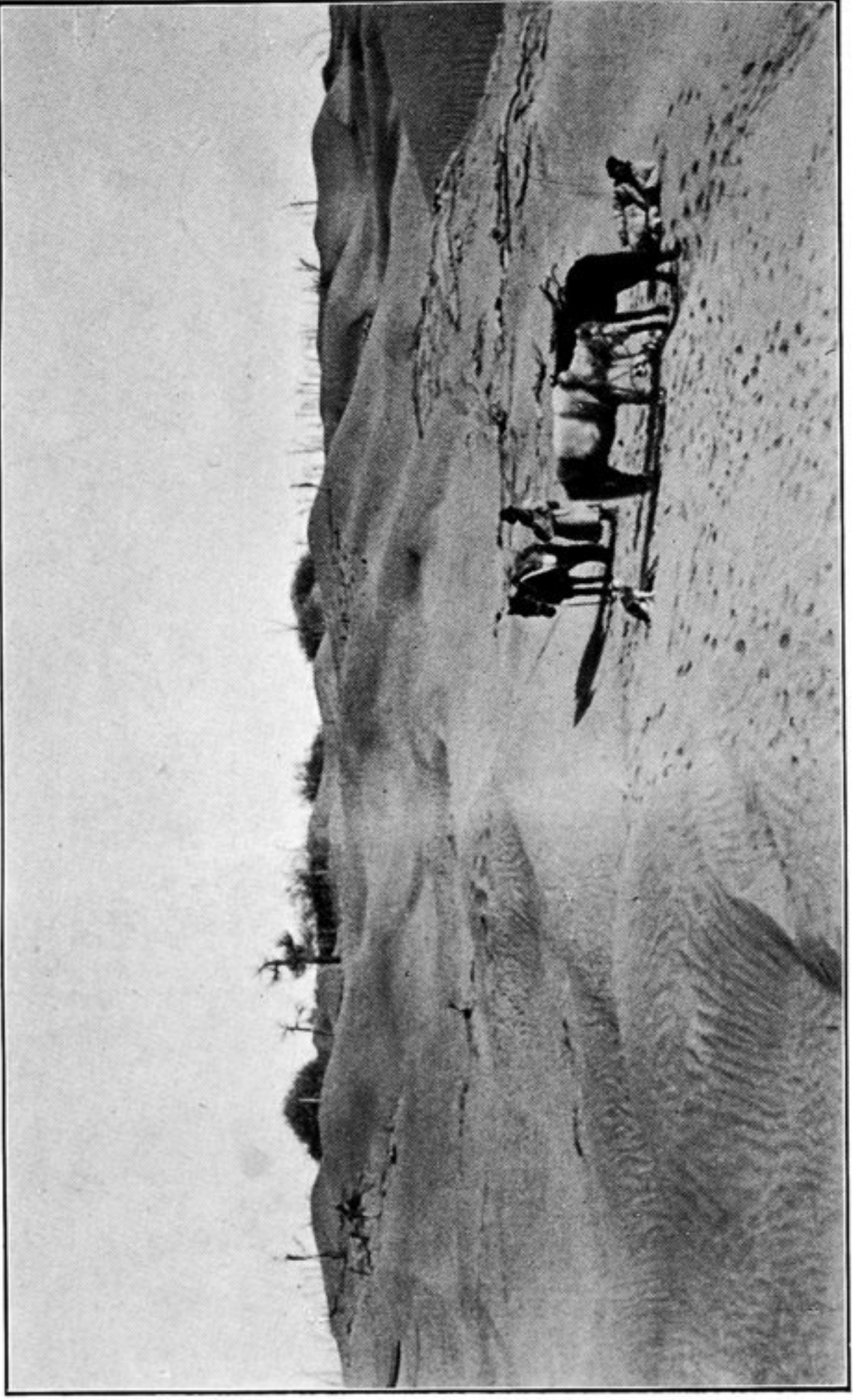
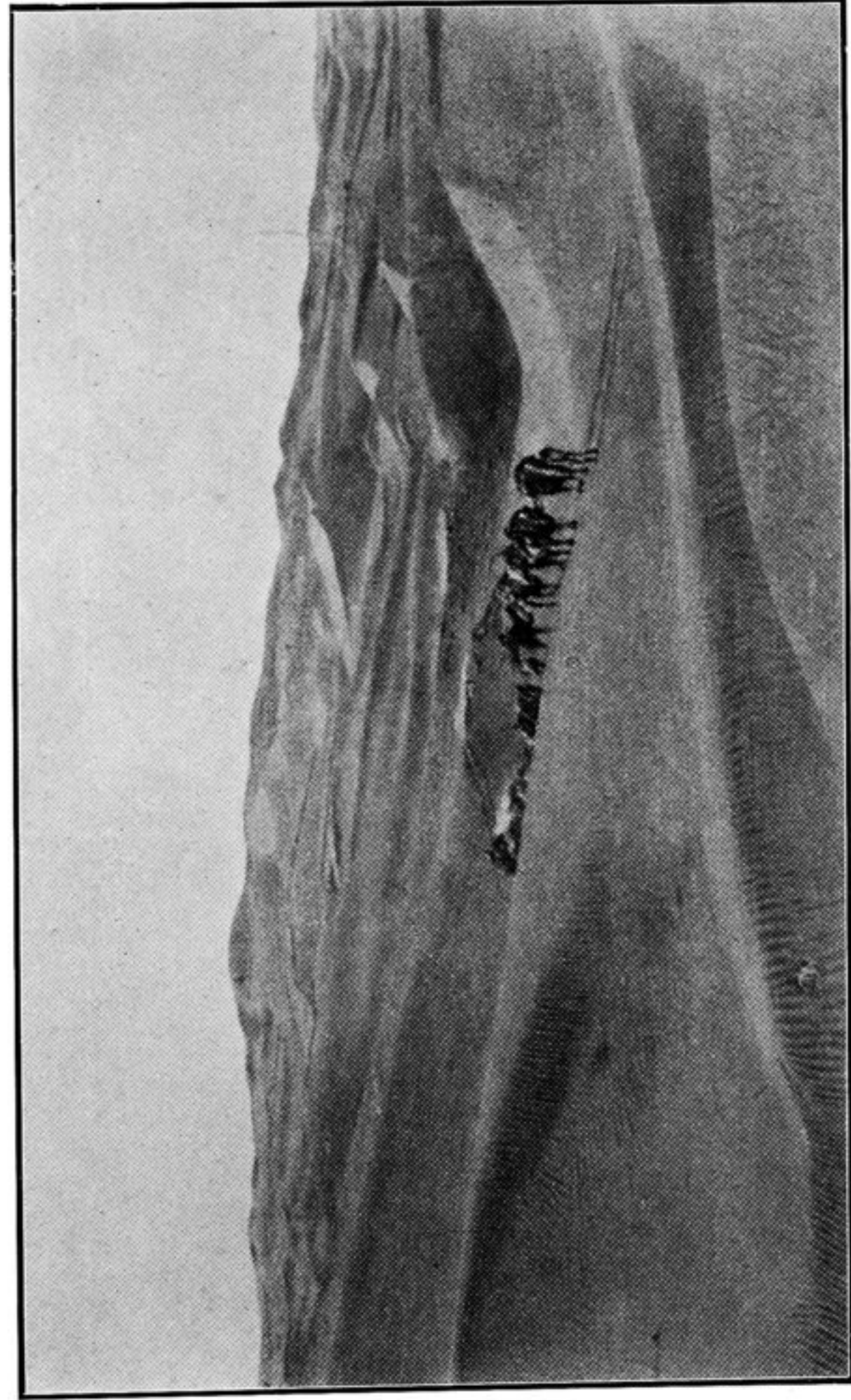


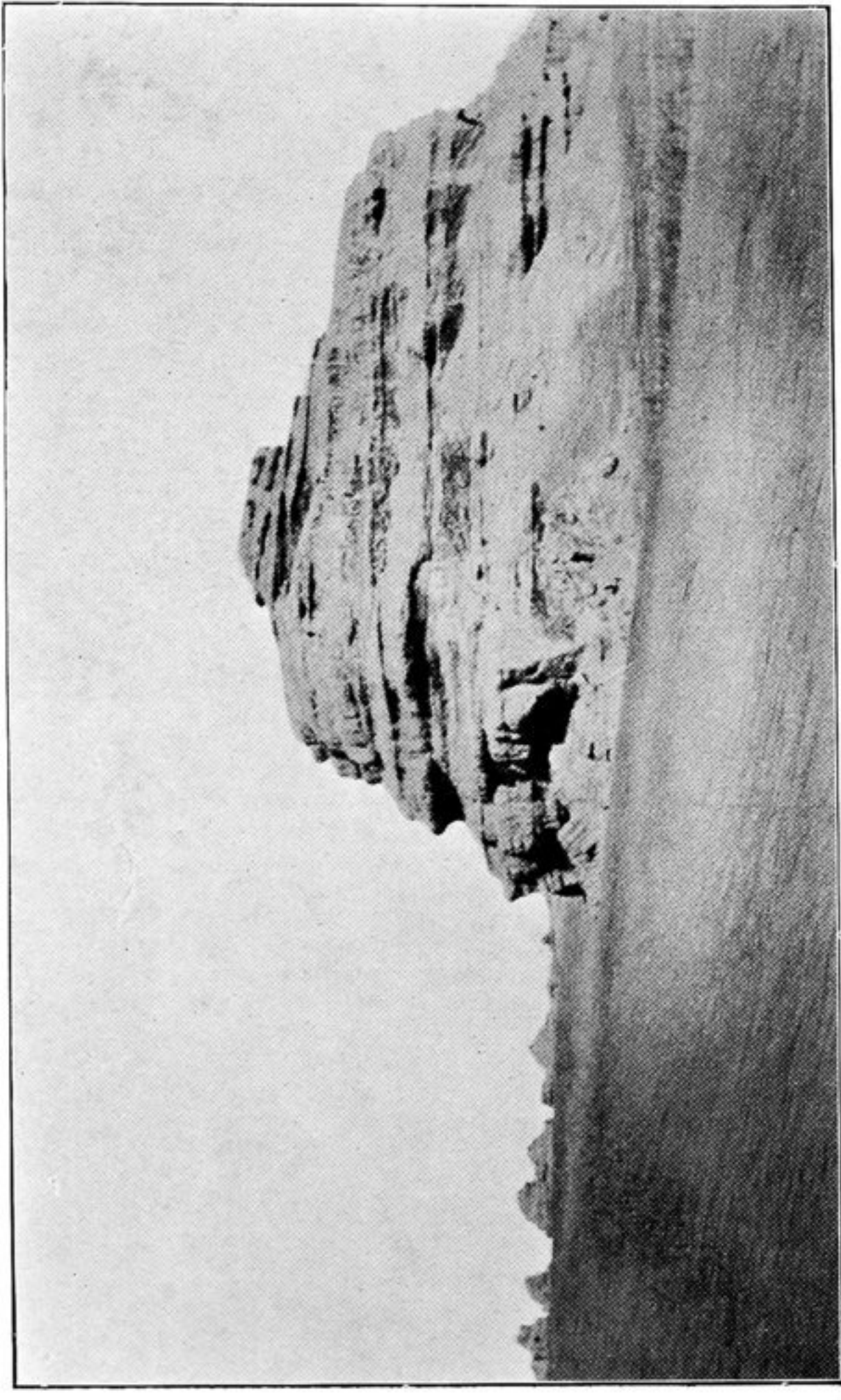
11. A.—MARCH ACROSS HIGH DUNES IN TAKLAMAKAN, TOWARDS
KERIYA RIVER END (SEE PAGE 19).



11. B.—OLD RIVER-BED BETWEEN CHARCHAK AND INCHIKE RIVERS
(SEE PAGE 19).



11. C.—SAND 'DAWANS' IN TAKLAMAKAN, SOUTH-EAST OF CHOK-TAGH
(SEE PAGE 26).



11. D.—WIND-ERODED CLAY TERRACE (MESA) NEAR W. EDGE OF
OLD TERMINAL BASIN OF SU-LO-HO (SEE PAGE 16).