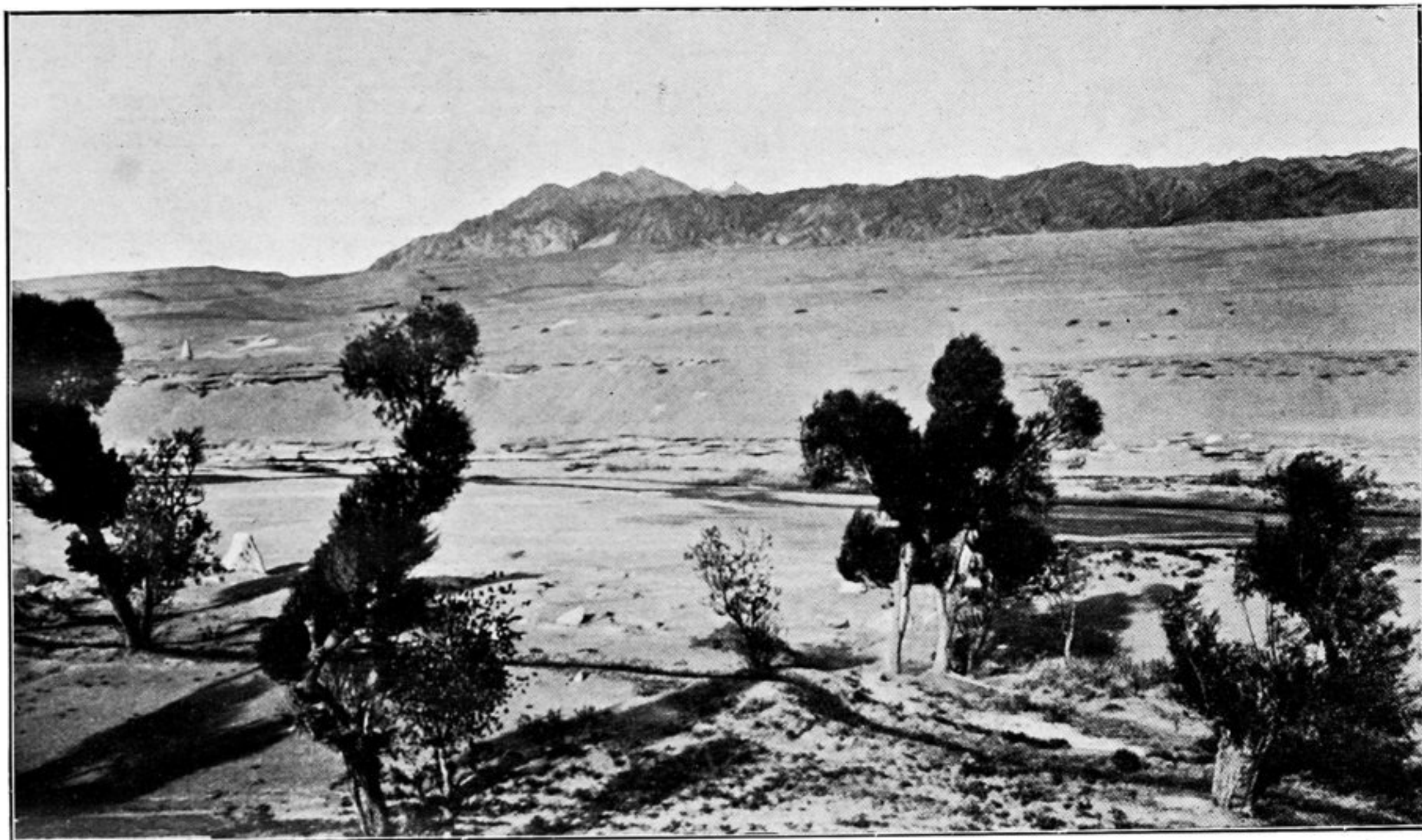
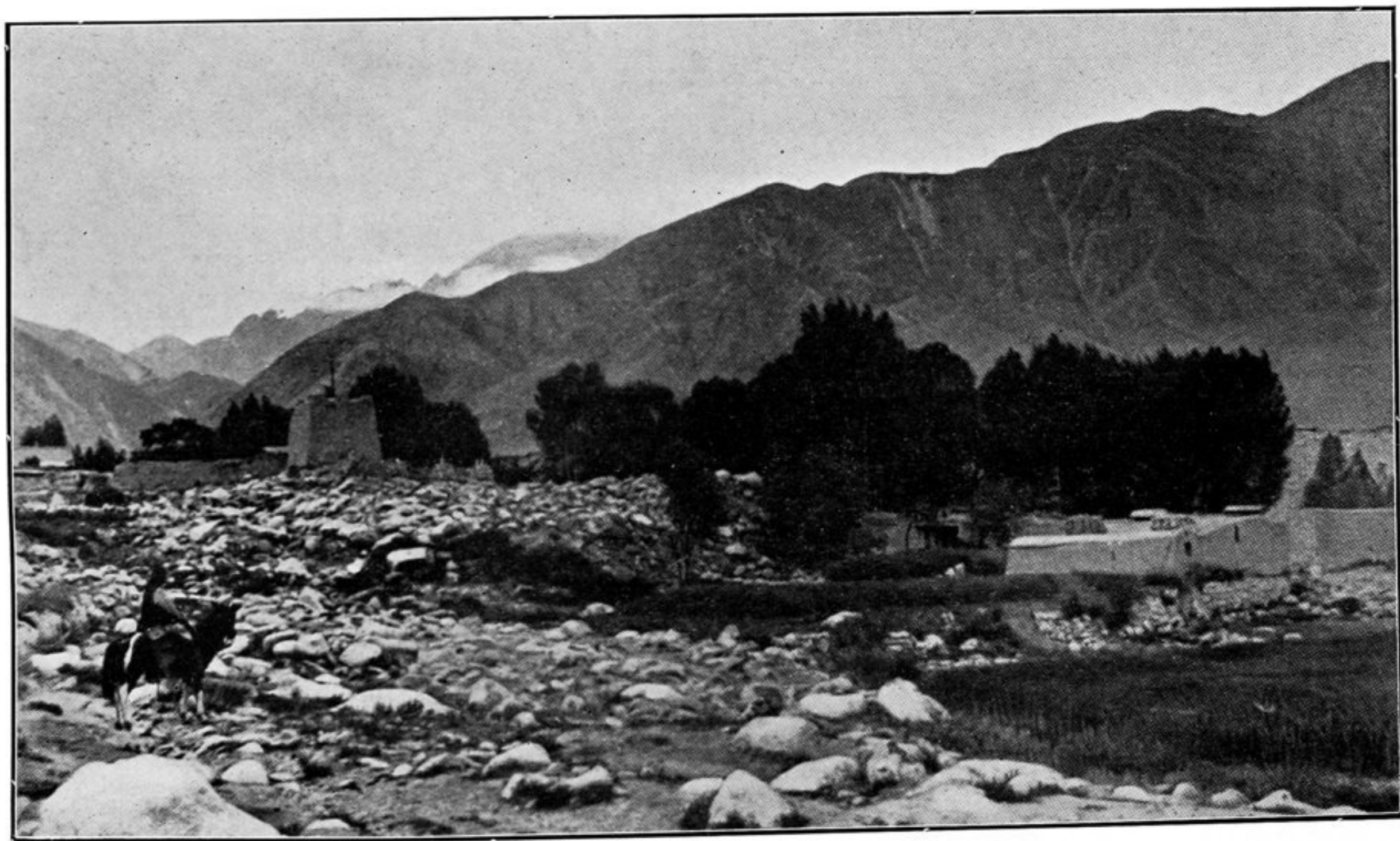


14. A.—VIEW SOUTH-WEST TOWARDS SNOWY MAIN RANGE FROM CH'ANGMA VILLAGE (SEE PAGE 17).



14. B.—BARREN HILL RANGE EAST OF 'CAVES OF THE THOUSAND BUDDHAS', SOUTH OF TUN-HUANG (SEE PAGE 17).



14. C.—FOOT-HILLS OF RICHTHOFEN RANGE SEEN FROM CHIN-FO-SSU VILLAGE (SEE PAGE 17).