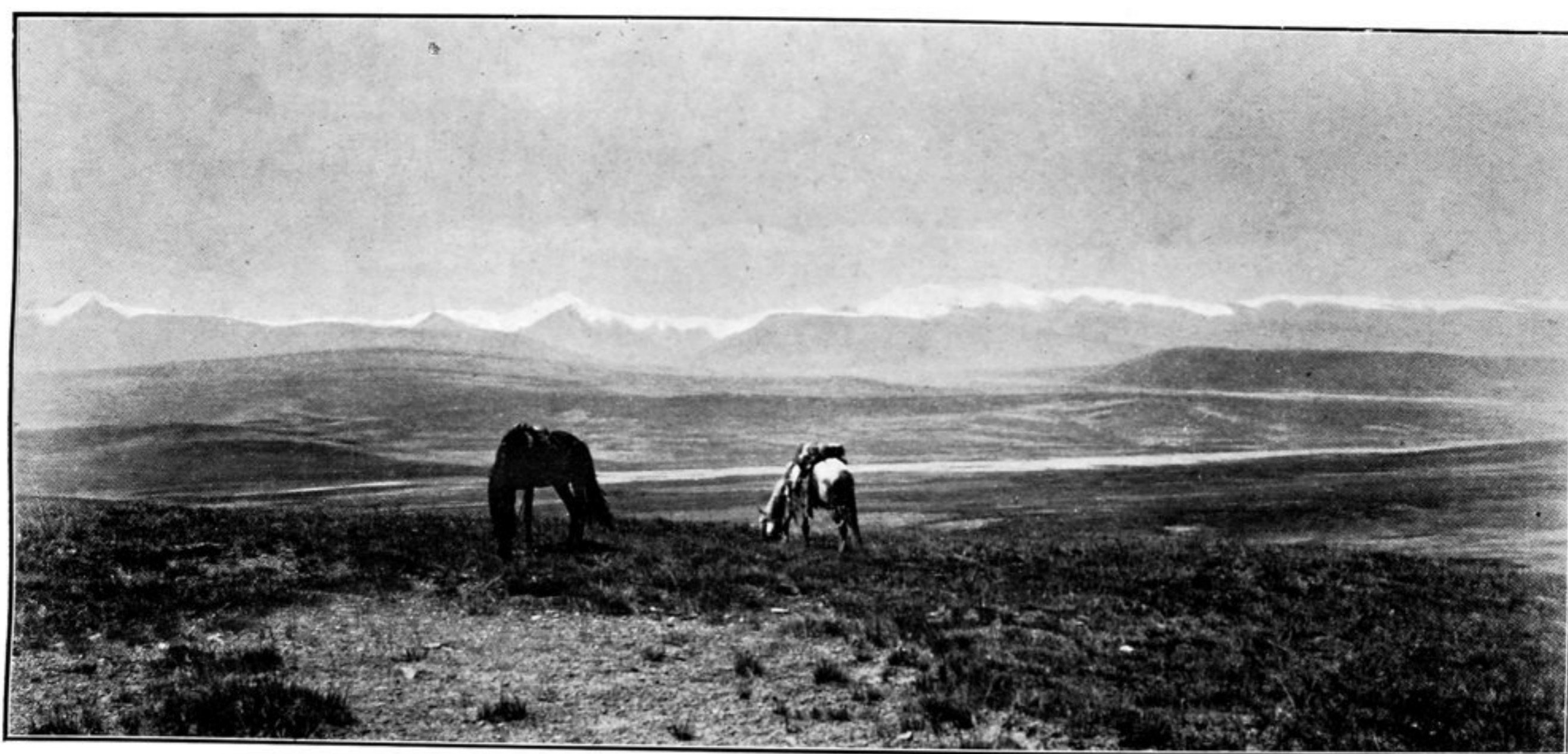
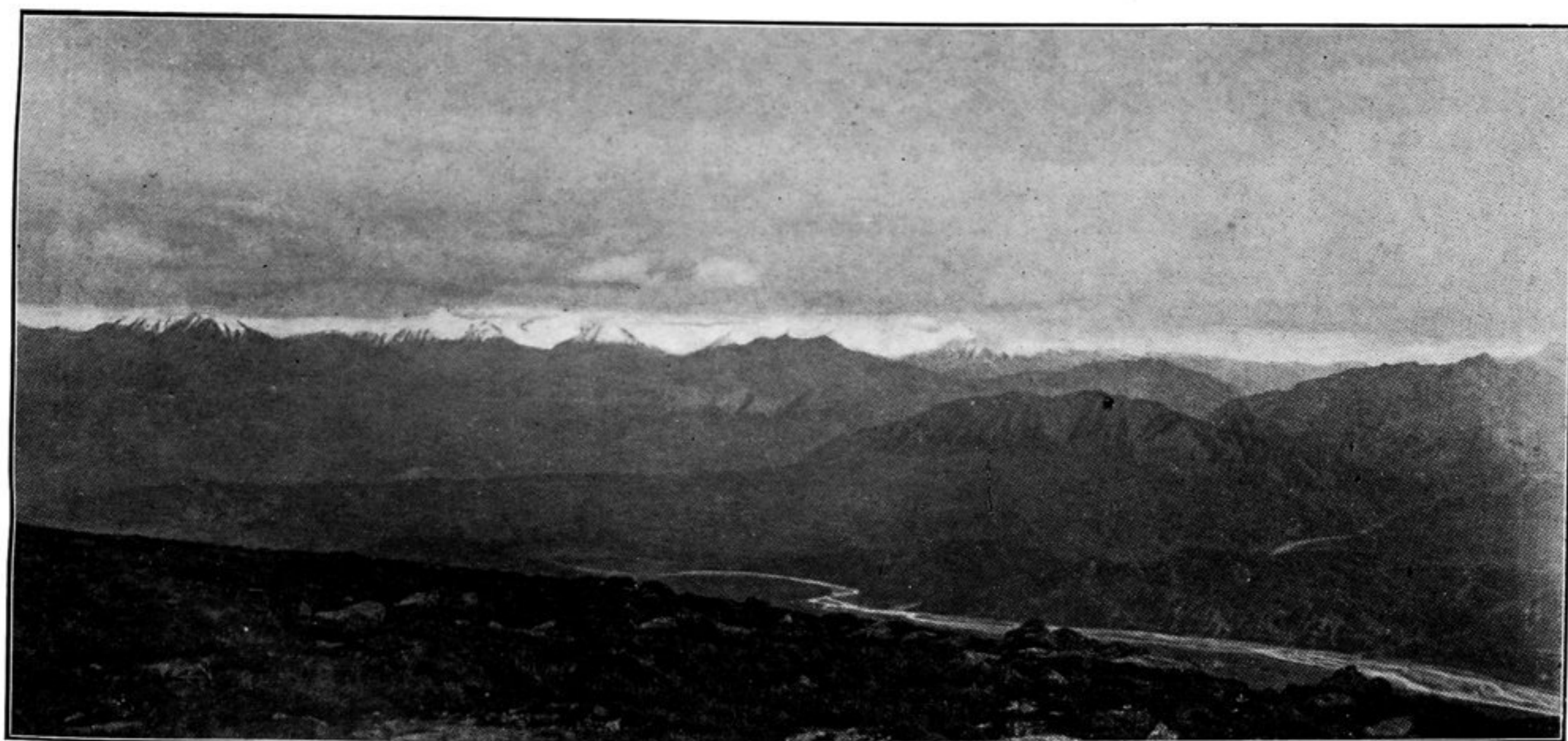


17. A.—SUESS RANGE OF NAN-SHAN, LOOKING SOUTH-EAST FROM CAMP 212
ACROSS SU-LO-HO VALLEY (SEE PAGES 17, 18).



17. B.—SUESS RANGE, LOOKING SOUTH FROM CAMP 212 ACROSS SU-LO-HO
VALLEY (SEE PAGES 17, 18).



17. C.—VIEW SOUTH FROM SHEN-LING-TZU PASS ACROSS KAN-CHOU RIVER
VALLEY TOWARDS TO-LAI-SHAN (SEE PAGE 18).