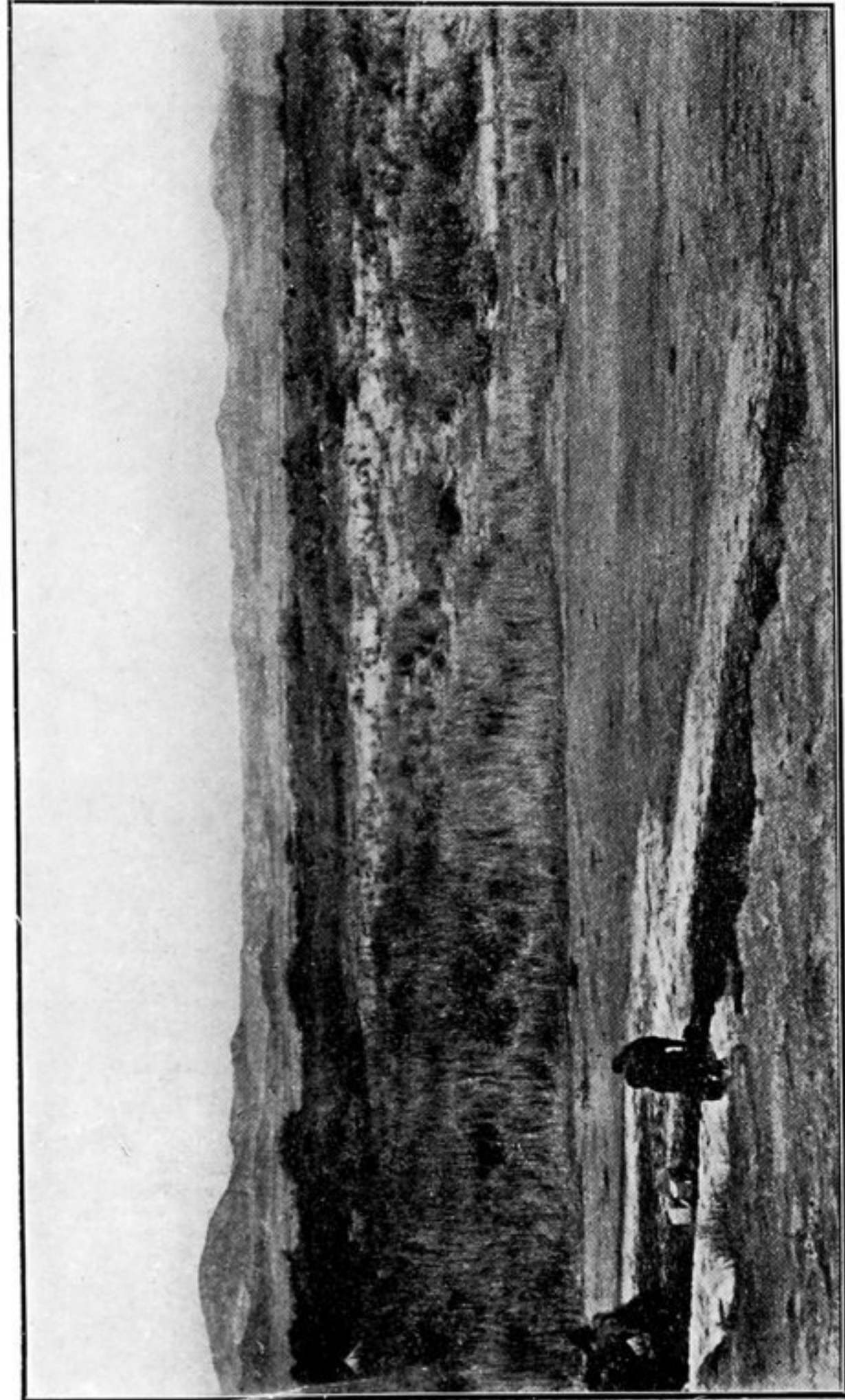
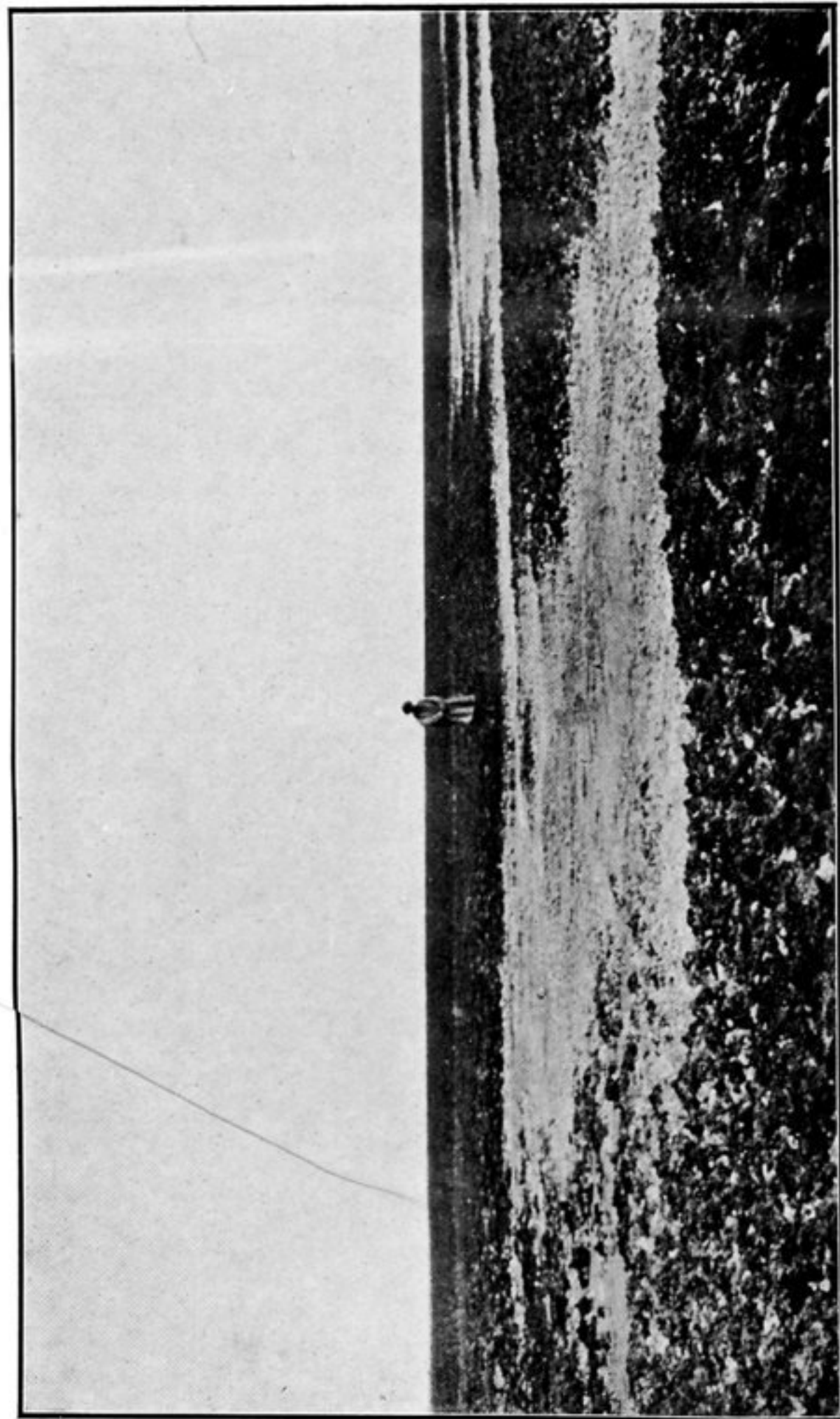


27. B.—CLAY TERRACES MARKING SHORE LINE OF ANCIENT LOP SEA,
N.W. OF KUM-KUDUK (SEE PAGE 30).

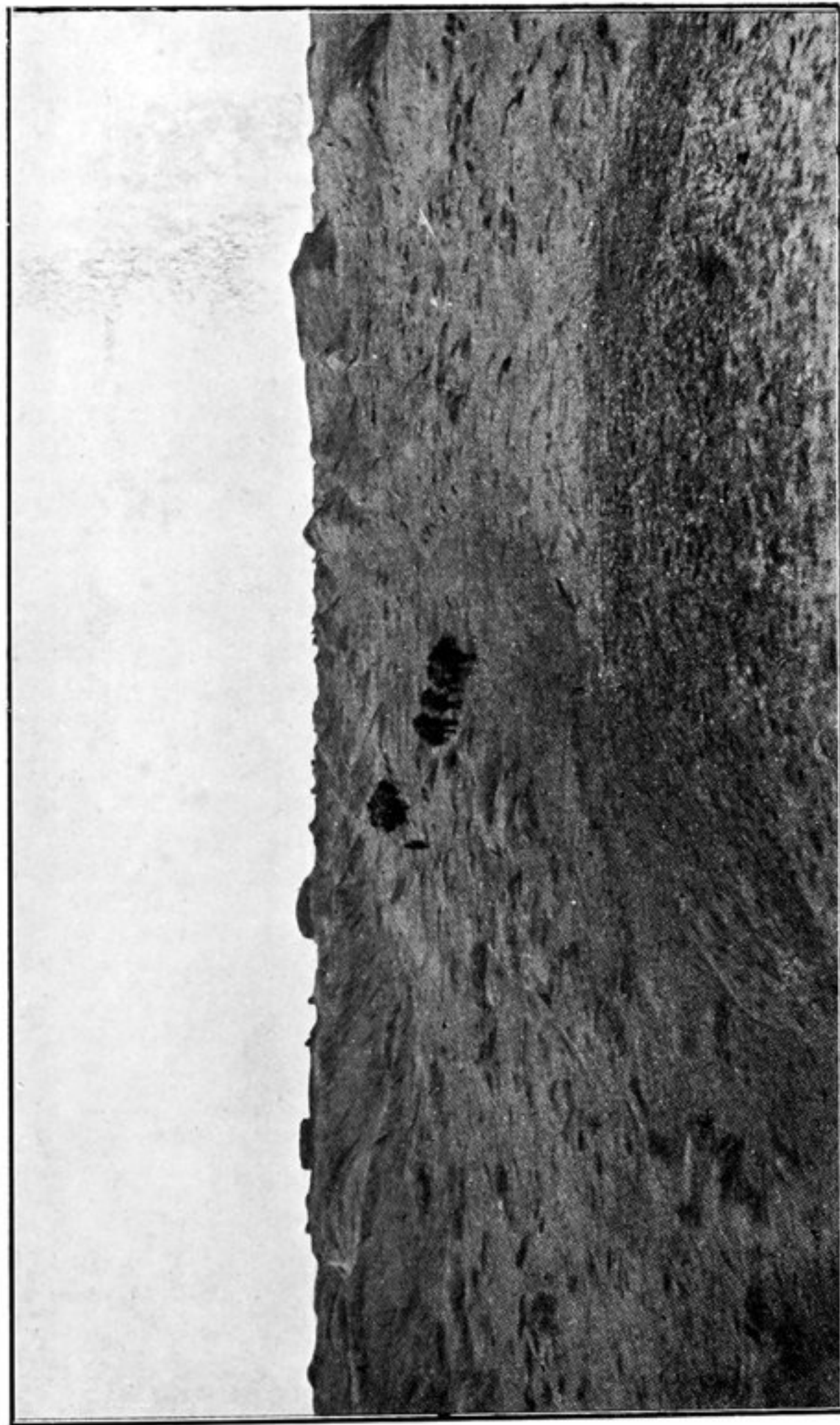


27. D.—ALTMISH-BULAK AT SOUTH FOOT OF KURUK-TAGH (SEE PAGE 30).
Frozen salt-spring and reed-bed in foreground.



27. A.—SALT-ENCRUSTED BED OF ANCIENT LOP SEA, N.W. OF
KUM-KUDUK (SEE PAGE 30).

Patch of actual salt bog shows up white.



27. C.—SALT-COATED EROSION TERRACES ('WHITE DRAGON MOUNDS')
NEAR N.W. SHORE OF ANCIENT LOP SEA (SEE PAGE 30).