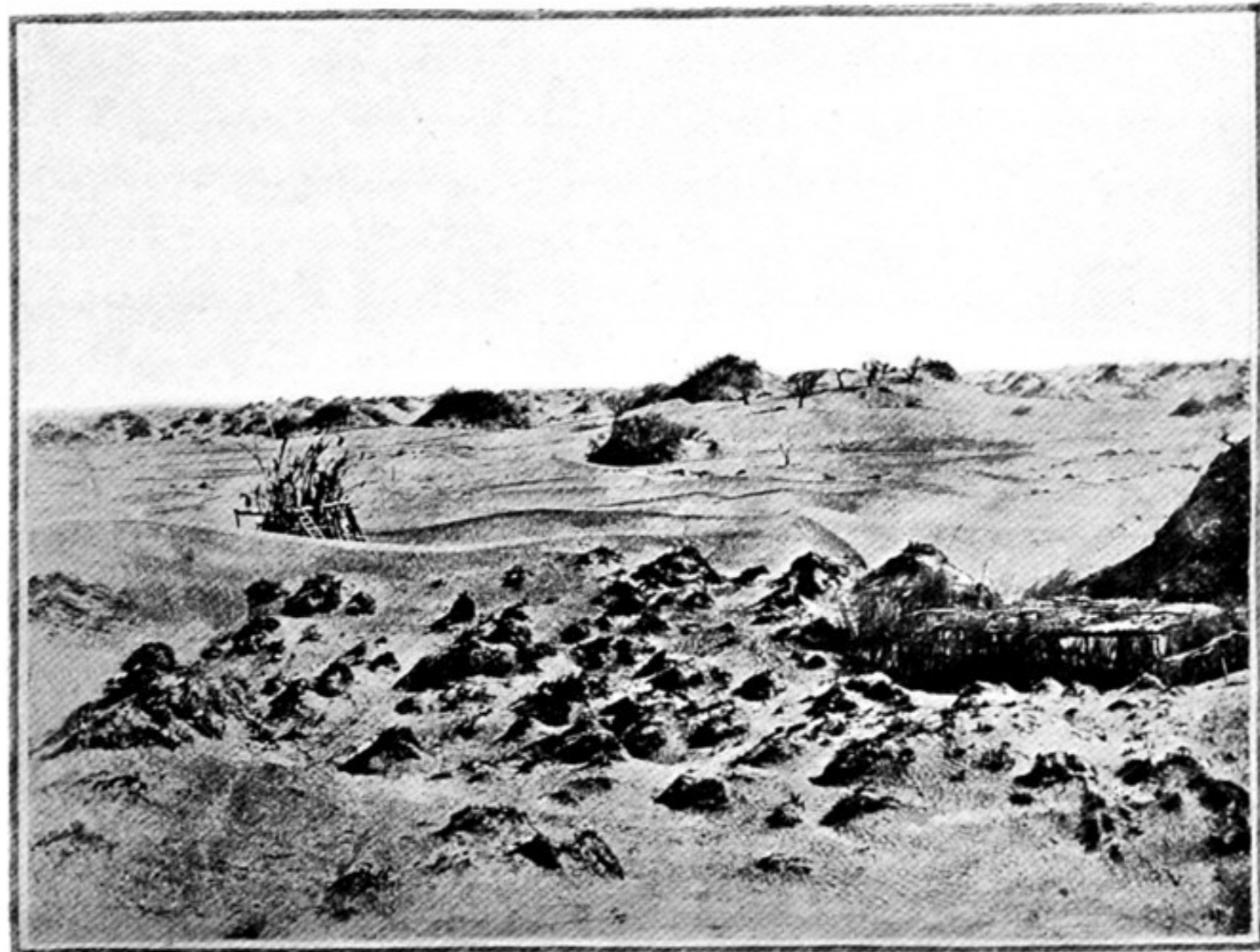


REMAINS OF RUINED STŪPA, ARKA-KUDUK-TIM,
HANGUYA TATI, SEEN FROM SOUTH.



REMAINS OF DESERTED MODERN DWELLING,
AT KOBZAGIRAM-SHAH, DOMOKO.



LACHIN-ATA MAZAR, SEEN FROM WEST.