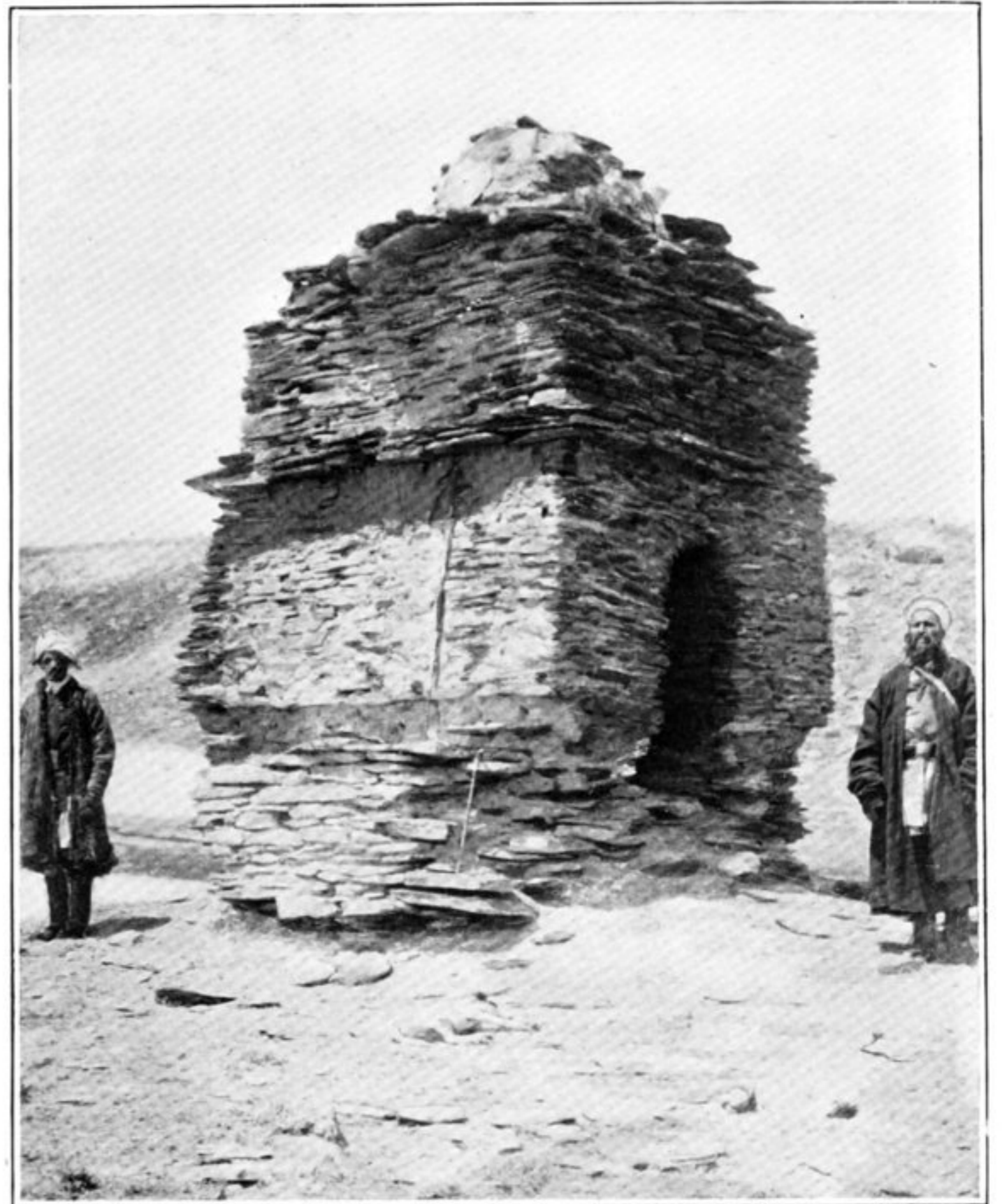




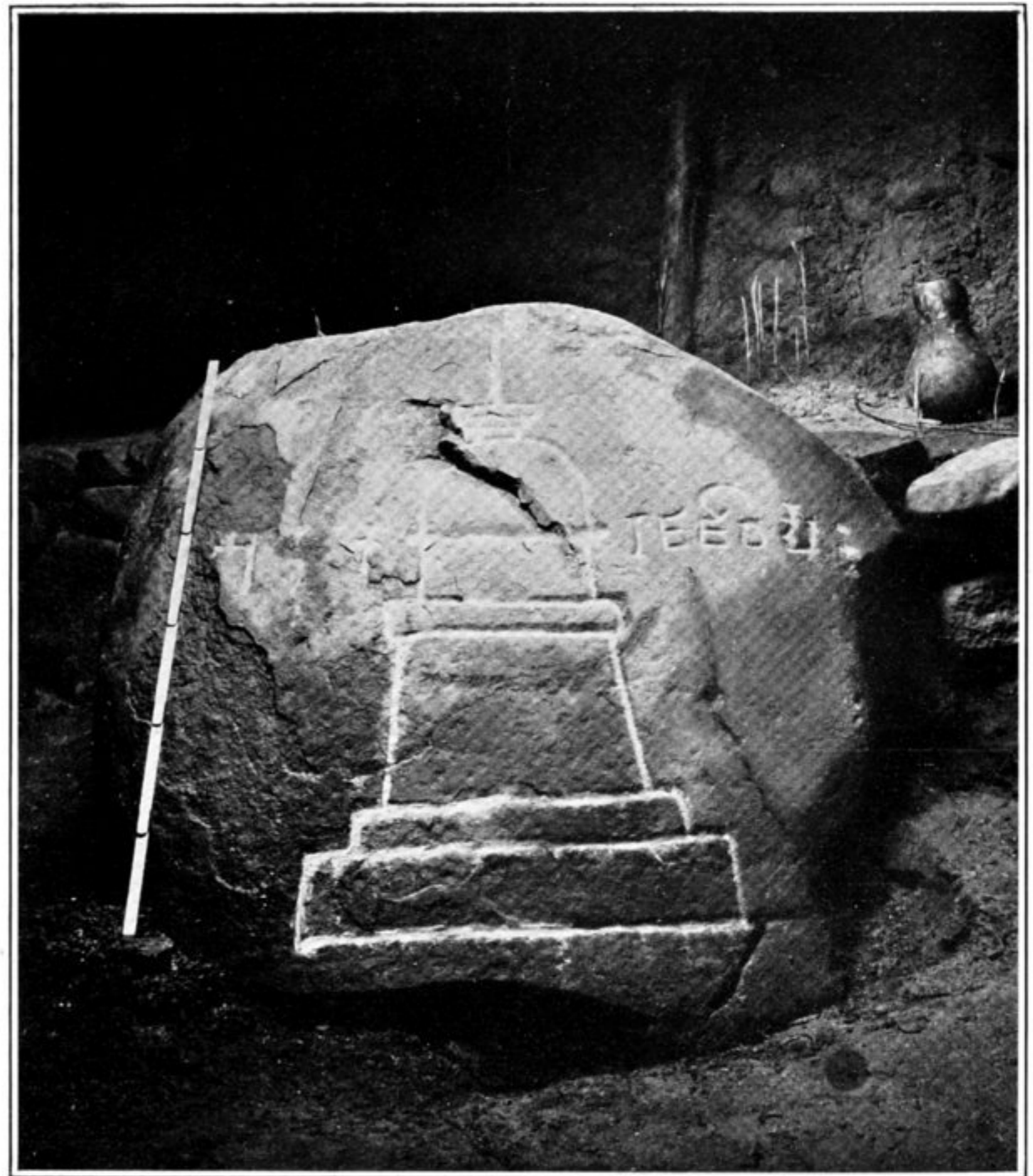
3. RUINED TEMPLE, GUMBAT, TĀLĀSH VALLEY.



4. RUIN OF KARWĀN-BALASI NEAR BOZAI-GUMBAZ, LITTLE PĀMĪR.



5. ROCK-CARVING OF STŪPA WITH INSCRIPTION, PAKHTŌRĪDĪNĪ, CHITRĀL.



6. BOULDER WITH REPRESENTATION OF STŪPA AND INSCRIPTION NEAR CHARRUN, MASTŪJ.