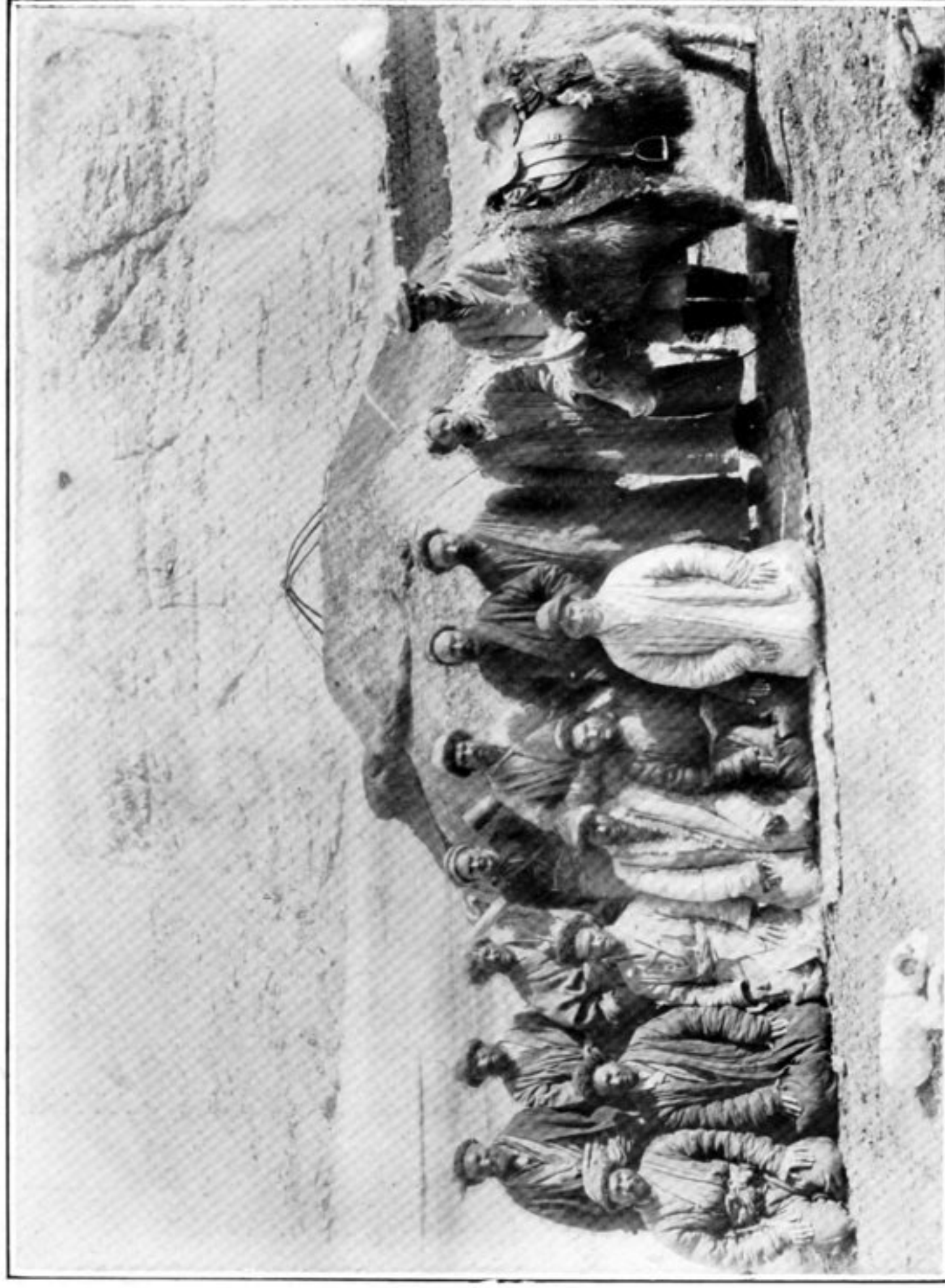
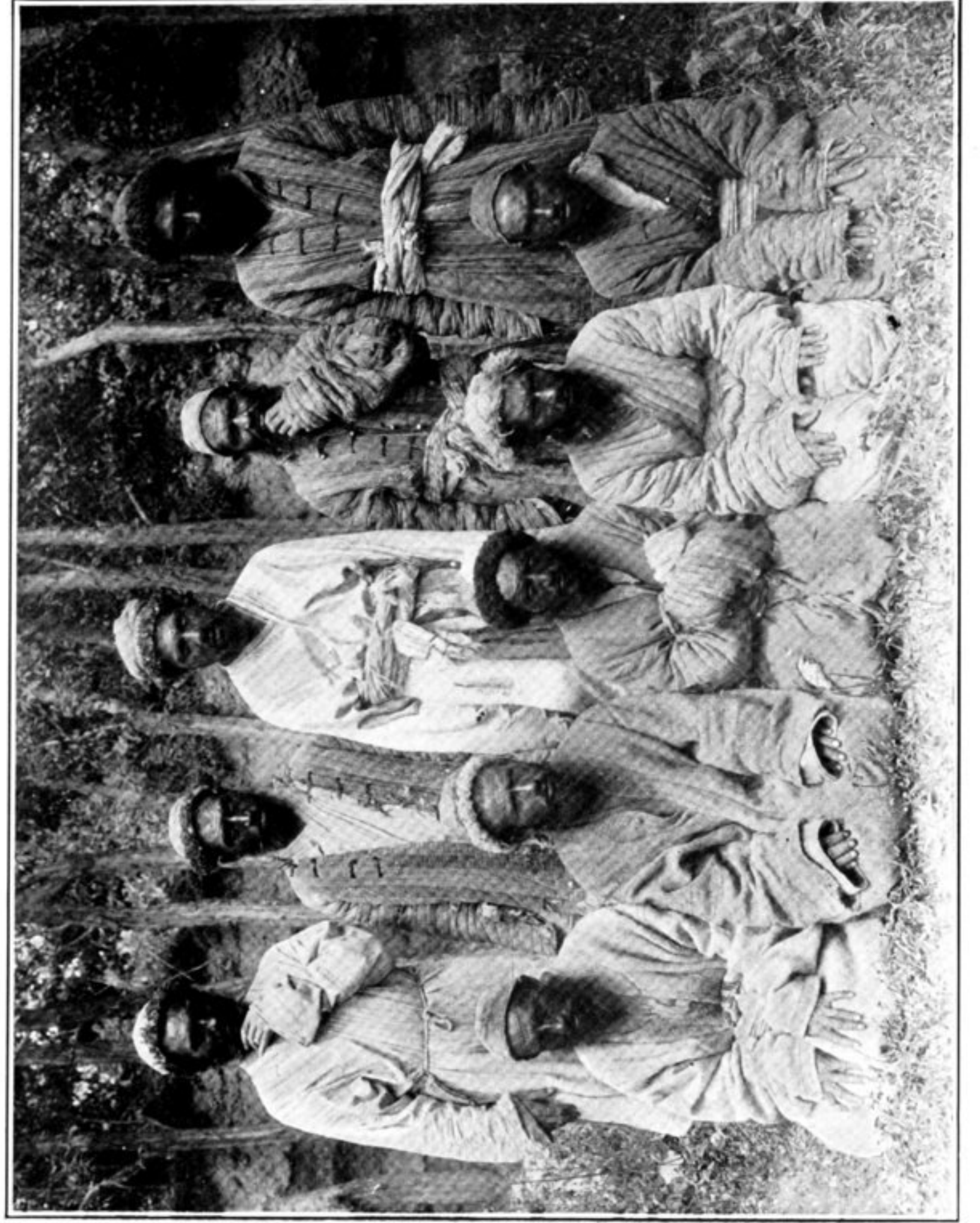




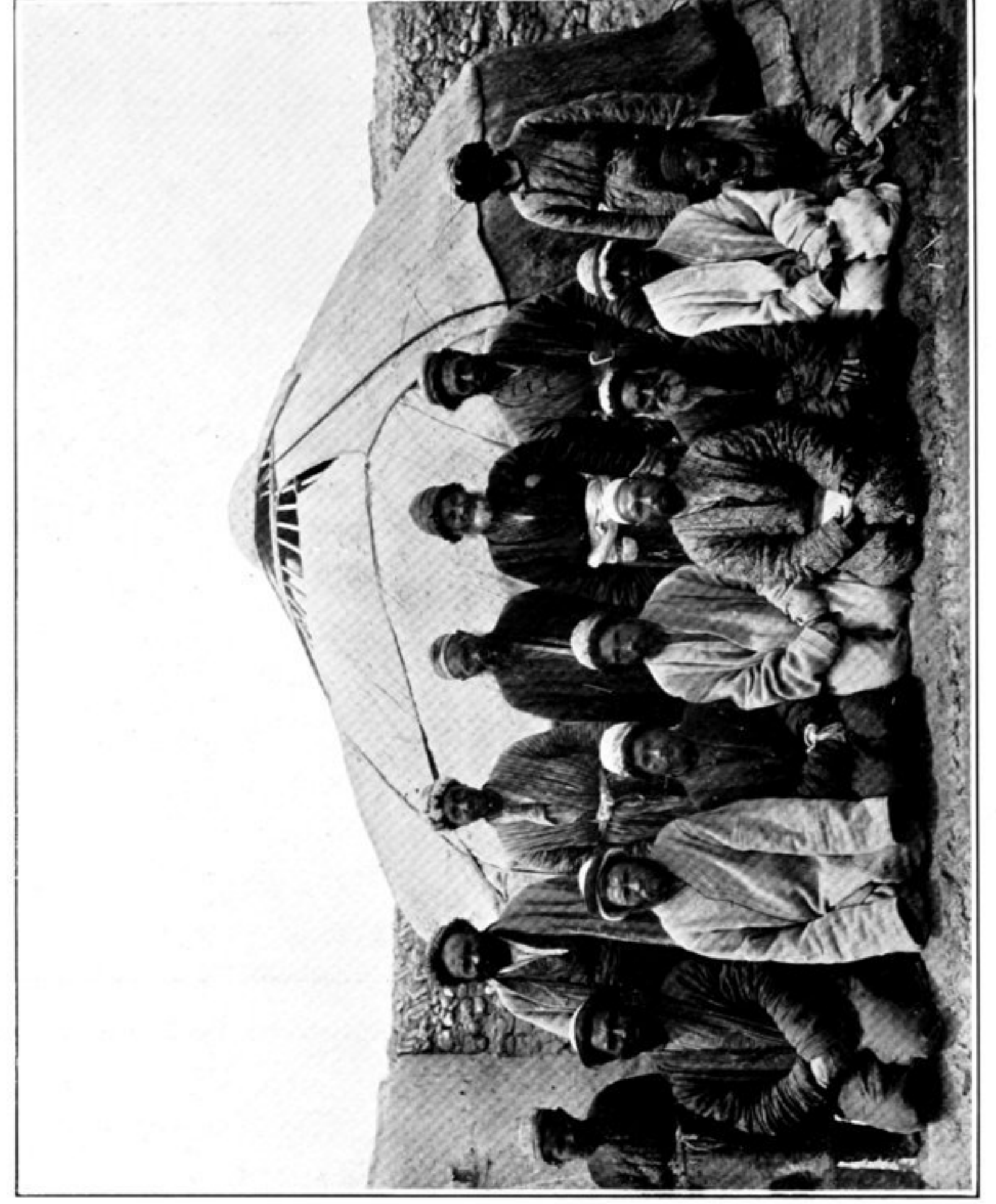
21. BADAQSHĪ IMMIGRANTS IN CHITRĀL.



22. SARĪKOLĪS AND KIRGHIZ AT PAYIK POST, TĀGHDUMBĀSH.



23. PAKHPU HILLMEN, ANTHROPOMETRICALLY EXAMINED AT KÖK-YĀR.



24. SARĪKOLĪS, ANTHROPOMETRICALLY EXAMINED AT TĀSH-KURGHĀN.