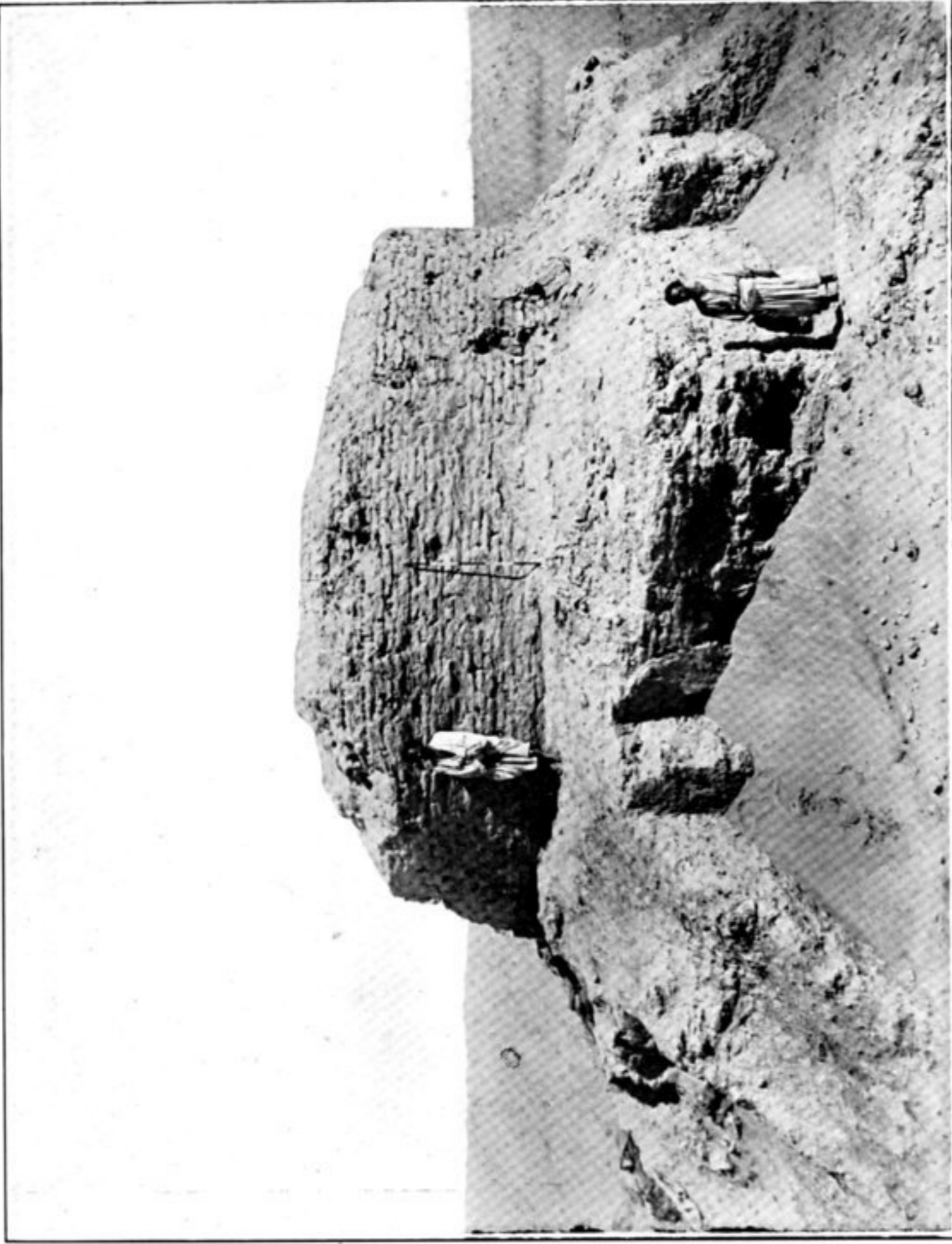
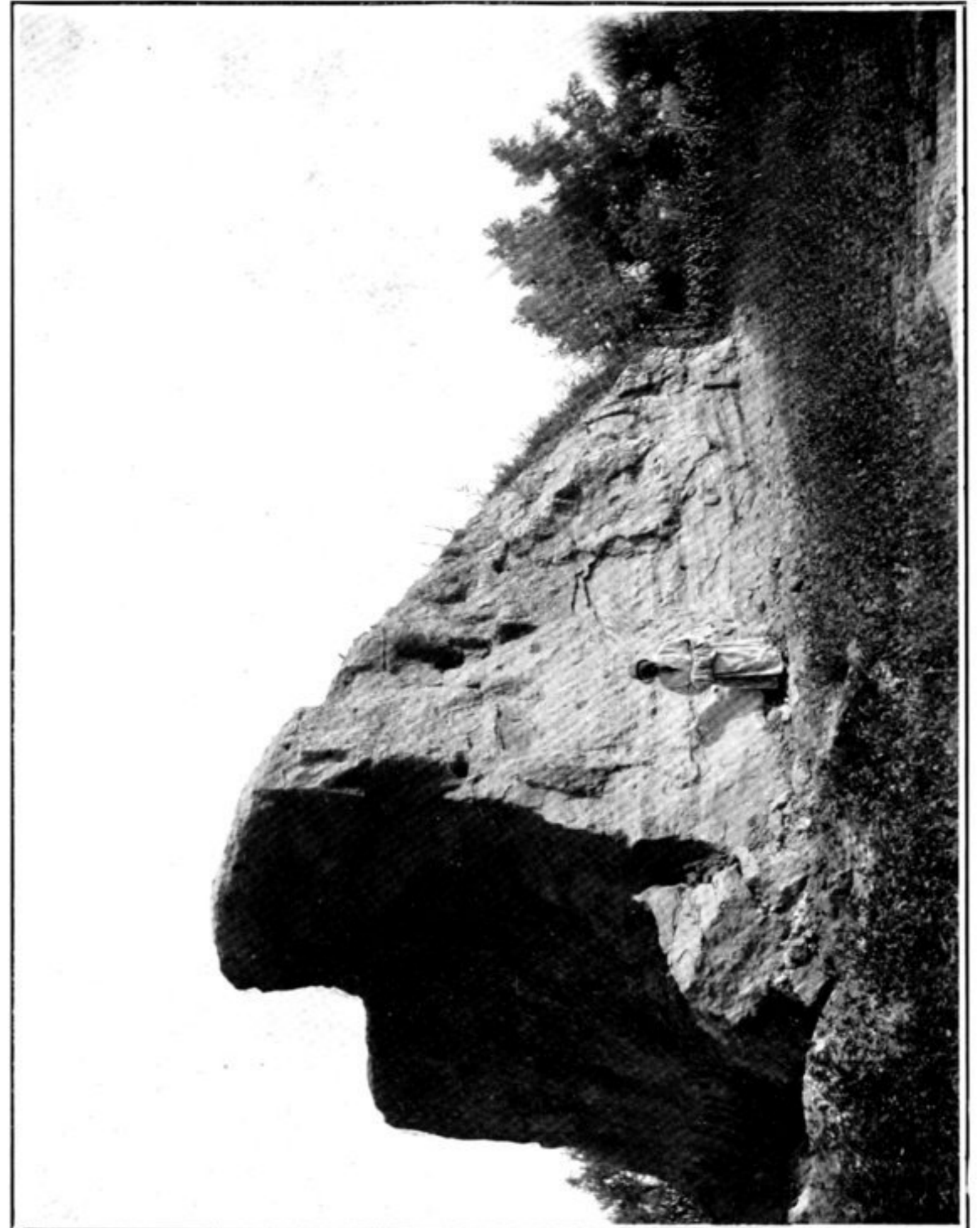


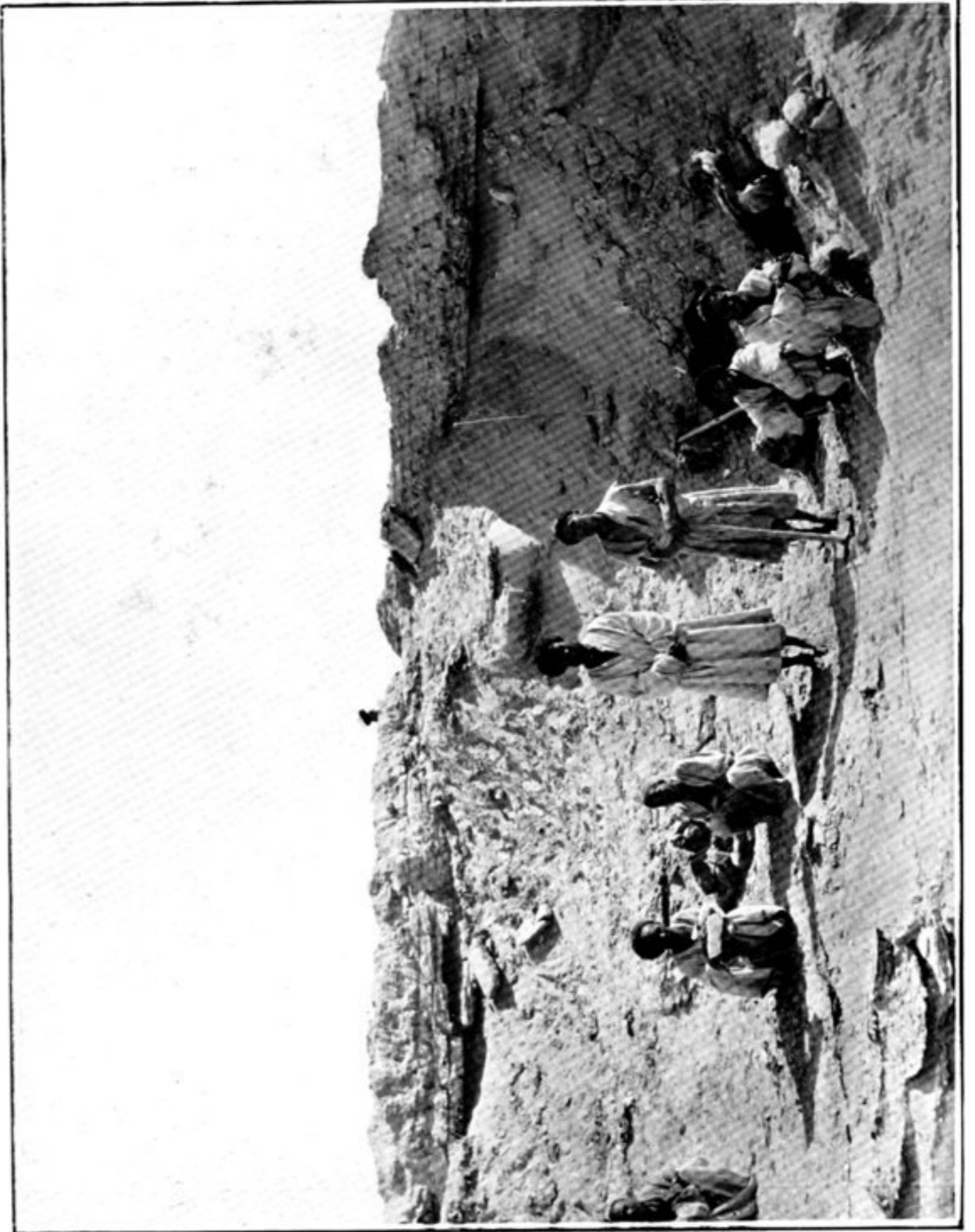
35. RAVINE OF DOMOKO-YÄR, SEEN FROM EASTERN END OF DAM.
(See i, p. 203.)



36. RUINED STÜPA OF RAWAK, SEEN FROM DUNE ABOVE SOUTH-WEST WALL OF QUADRANGLE.



37. REMAINS OF RUINED MOUND, NACHÄRA-KHÄNA, NEAR YÖTKAN, SEEN FROM SOUTH.



38. WINDERODED REMAINS OF RUINED TEMPLE AT KINE-TOKMAK.
Arrows mark lowest masonry course of south-east and south-west walls of cella.