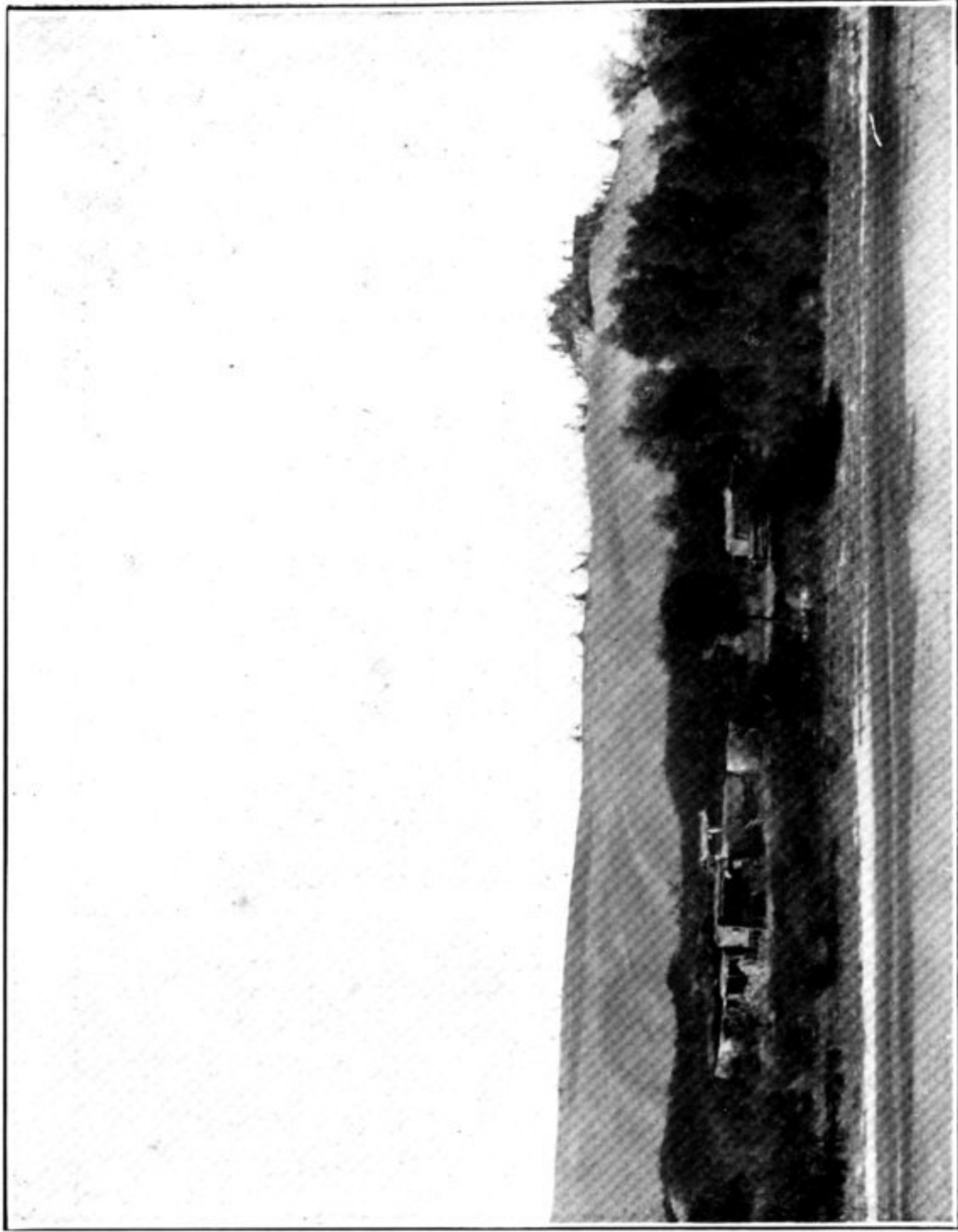
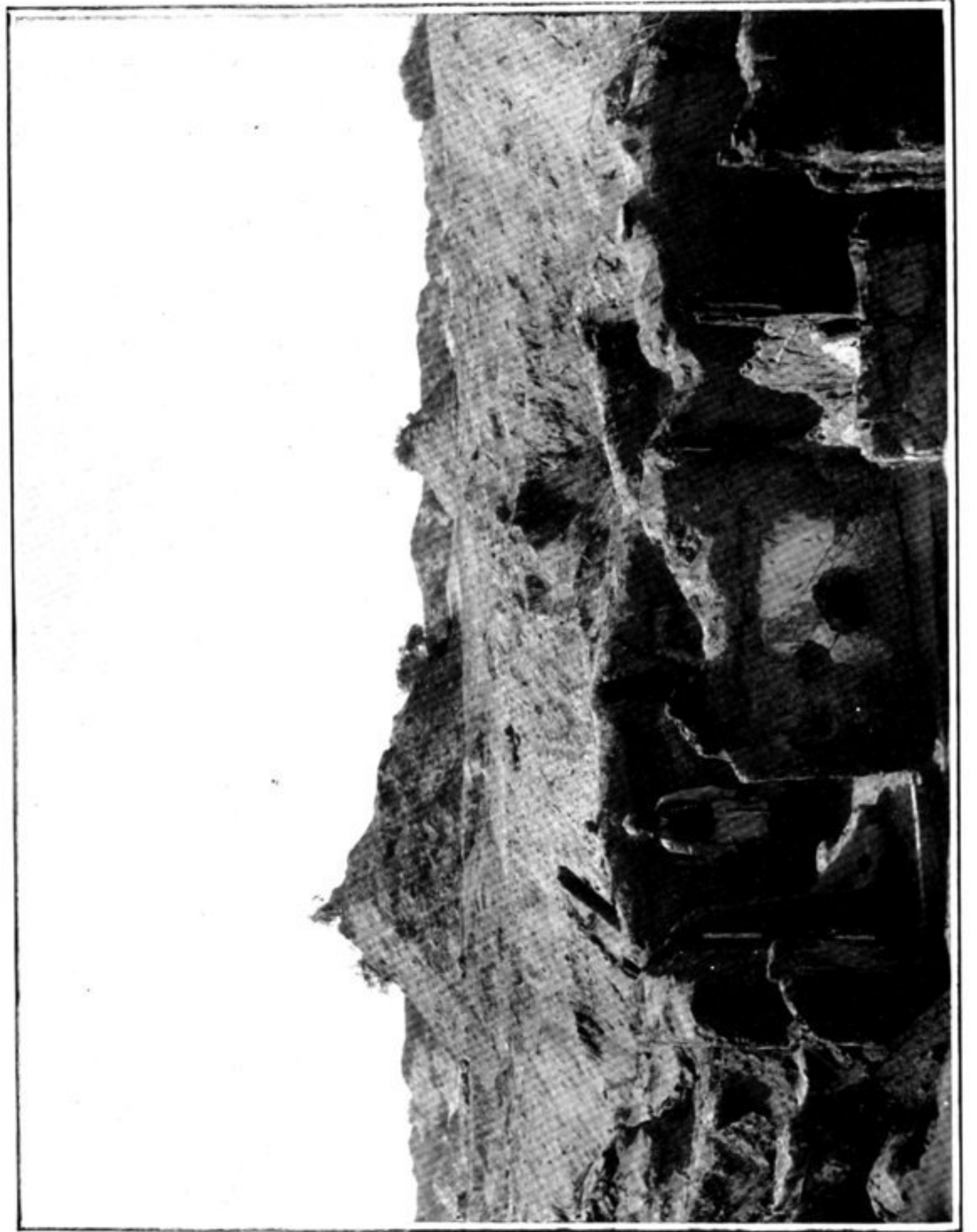


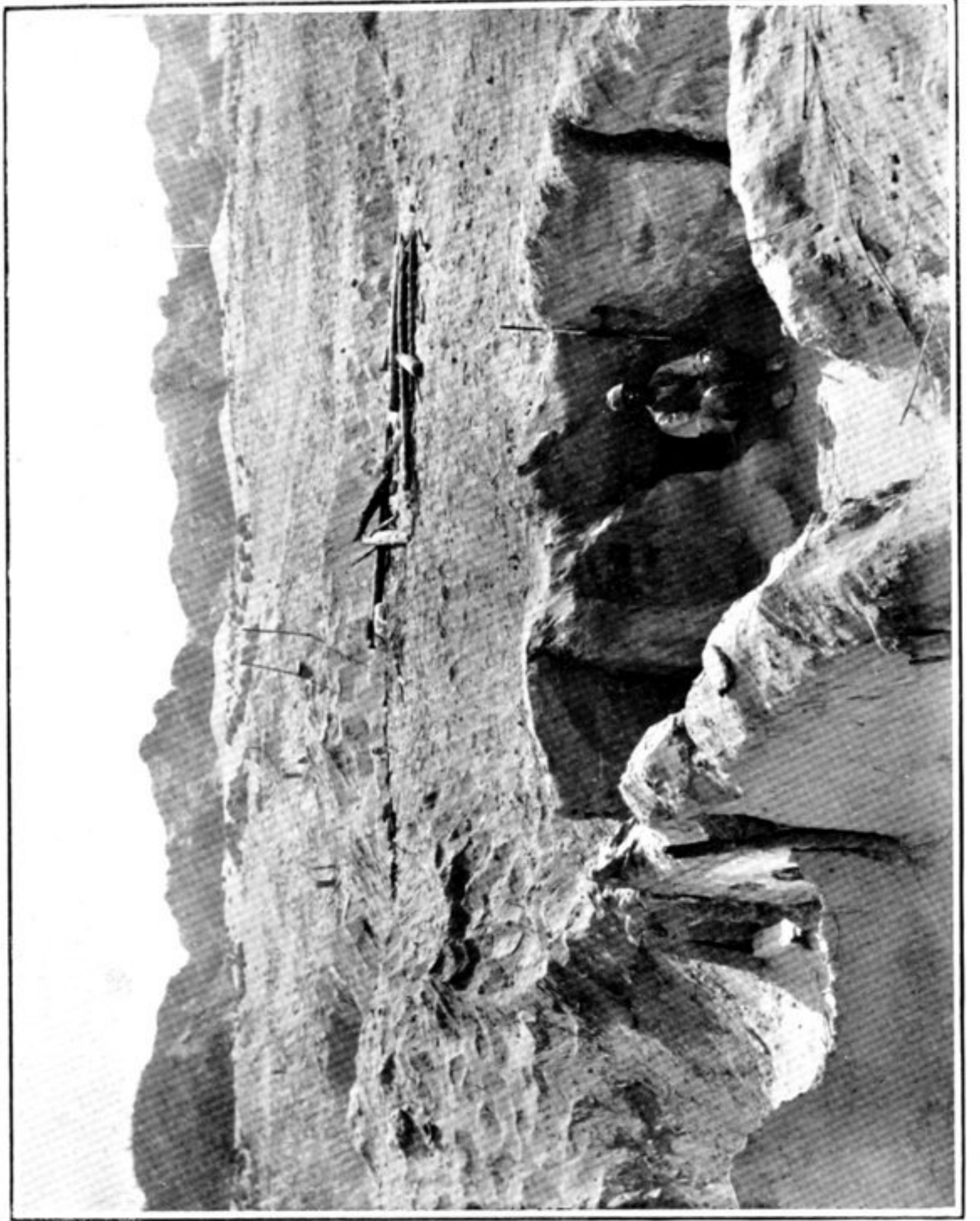
43. WINDERODED 'TATI', S.W. OF KICHILLIK, KHĀDALIK.



44. MAZĀR OF IMĀM JA'FAR SĀDIQ, SEEN FROM SOUTH-EAST.  
(See p. 212)



45. REMAINS OF RUINED DWELLING Kha. iv, v, KHĀDALIK, SEEN FROM NORTH-WEST,  
AFTER EXCAVATION.  
(See p. 159)



46. INTERIOR OF ROOM Kha. iv, KHĀDALIK, SHOWING FIRE-PLACE AND SITTING-  
PLATFORM.  
(See p. 159)