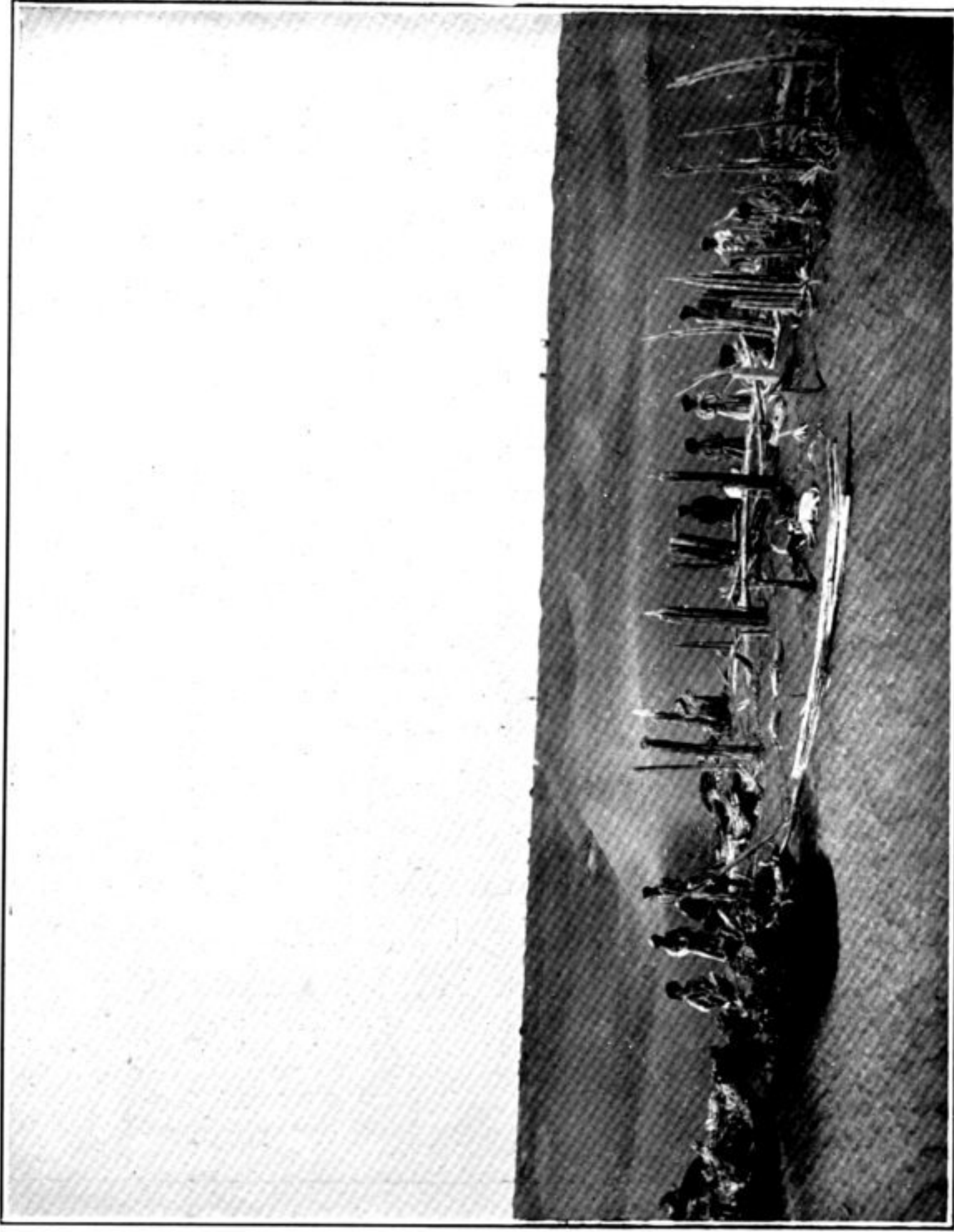
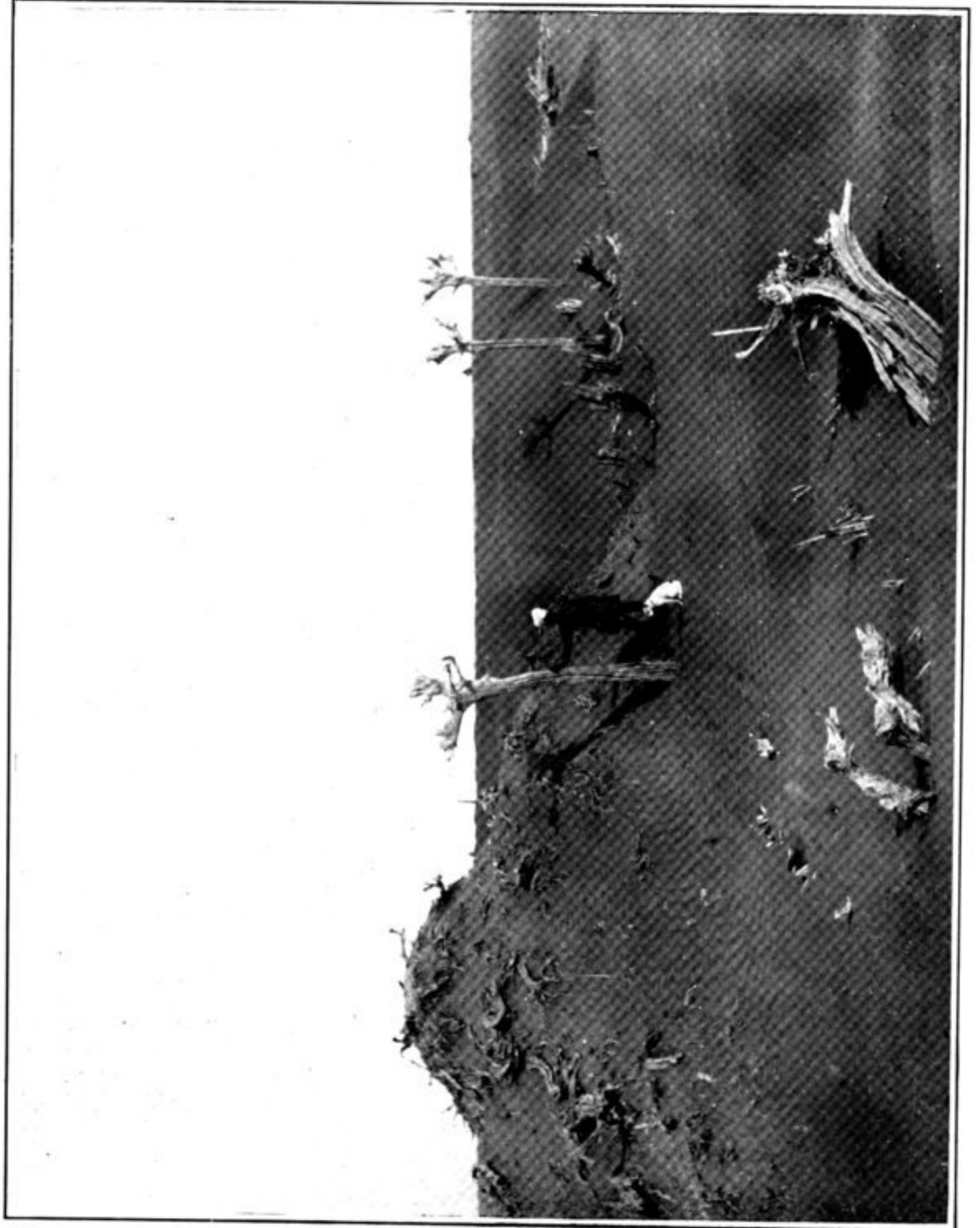


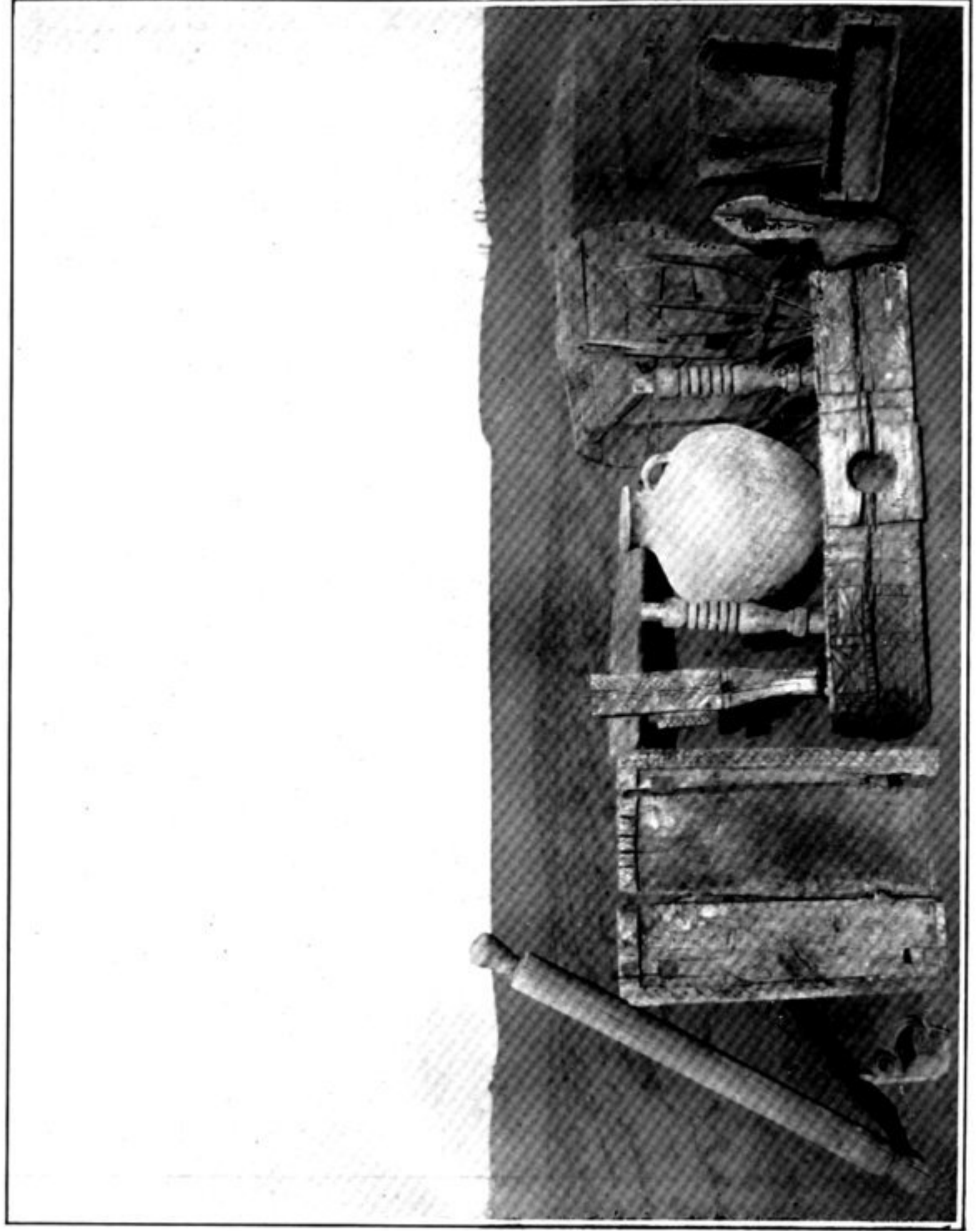
49. REMAINS OF HALL OF RUIN N. XIV, NIYA SITE, SEEN FROM S.W.



50. EASTERN PORTION OF RUINED DWELLING N. XIX, NIYA SITE, BEFORE EXCAVATION, SEEN FROM SOUTH.



54. DEAD MULBERRY TREES IN ANCIENT ORCHARD, S.E. OF RUIN N. XVIII, NIYA SITE.



52. REMAINS OF HOUSEHOLD FURNITURE AND IMPLEMENTS EXCAVATED IN RUINS N. XIII, XV, NIYA SITE.