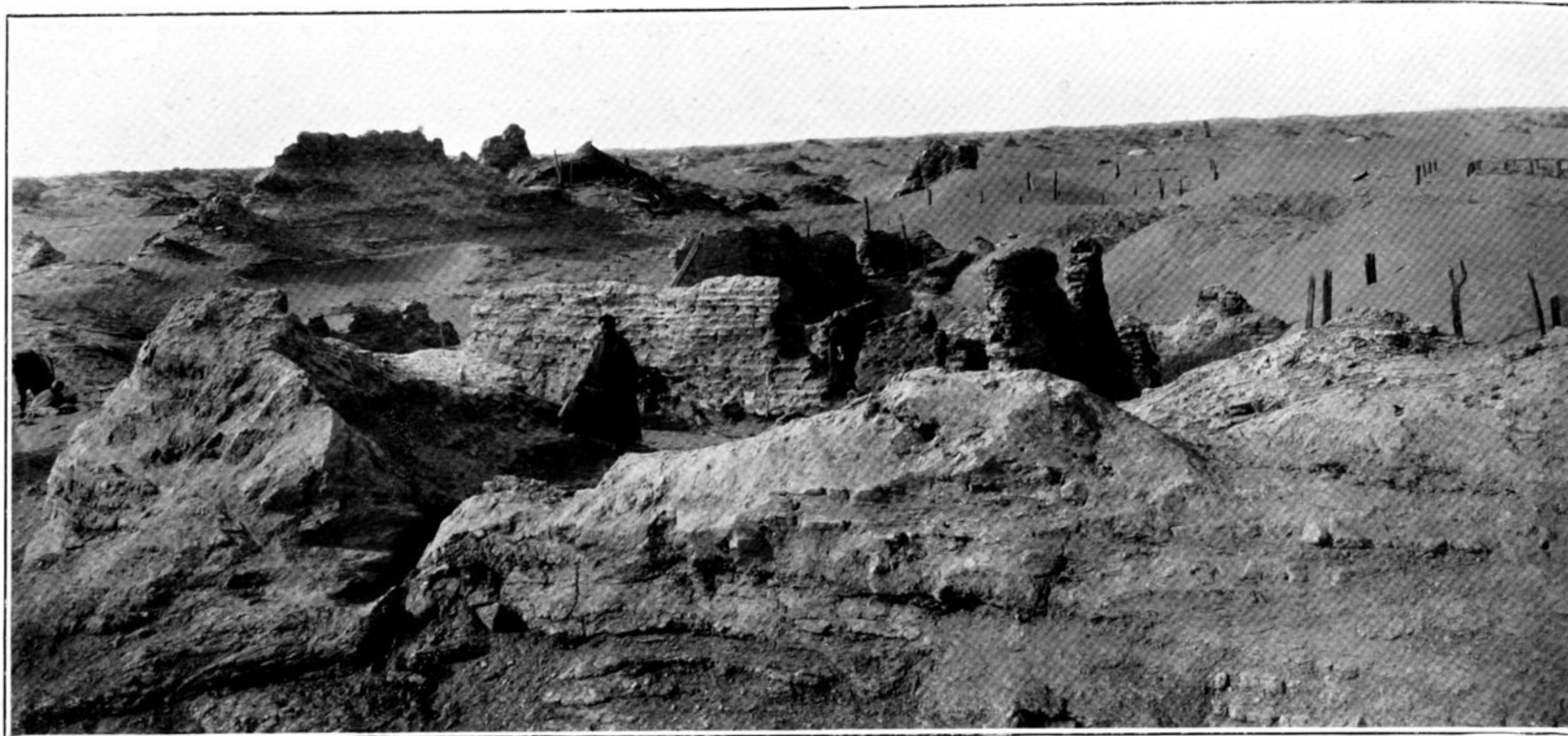


A



B

78. INTERIOR OF RUINED T'ANG FORT, ENDERE SITE, SEEN FROM NORTH-EAST.  
In foreground walls of large structure E. III, before excavation. A marks position of earlier refuse deposit under fort wall, B that of Buddhist temple in centre of fort.



79. RUINED TOWER, E. vii, WITH REMAINS OF WIND-ERODED DWELLING IN FOREGROUND, ENDERE SITE.