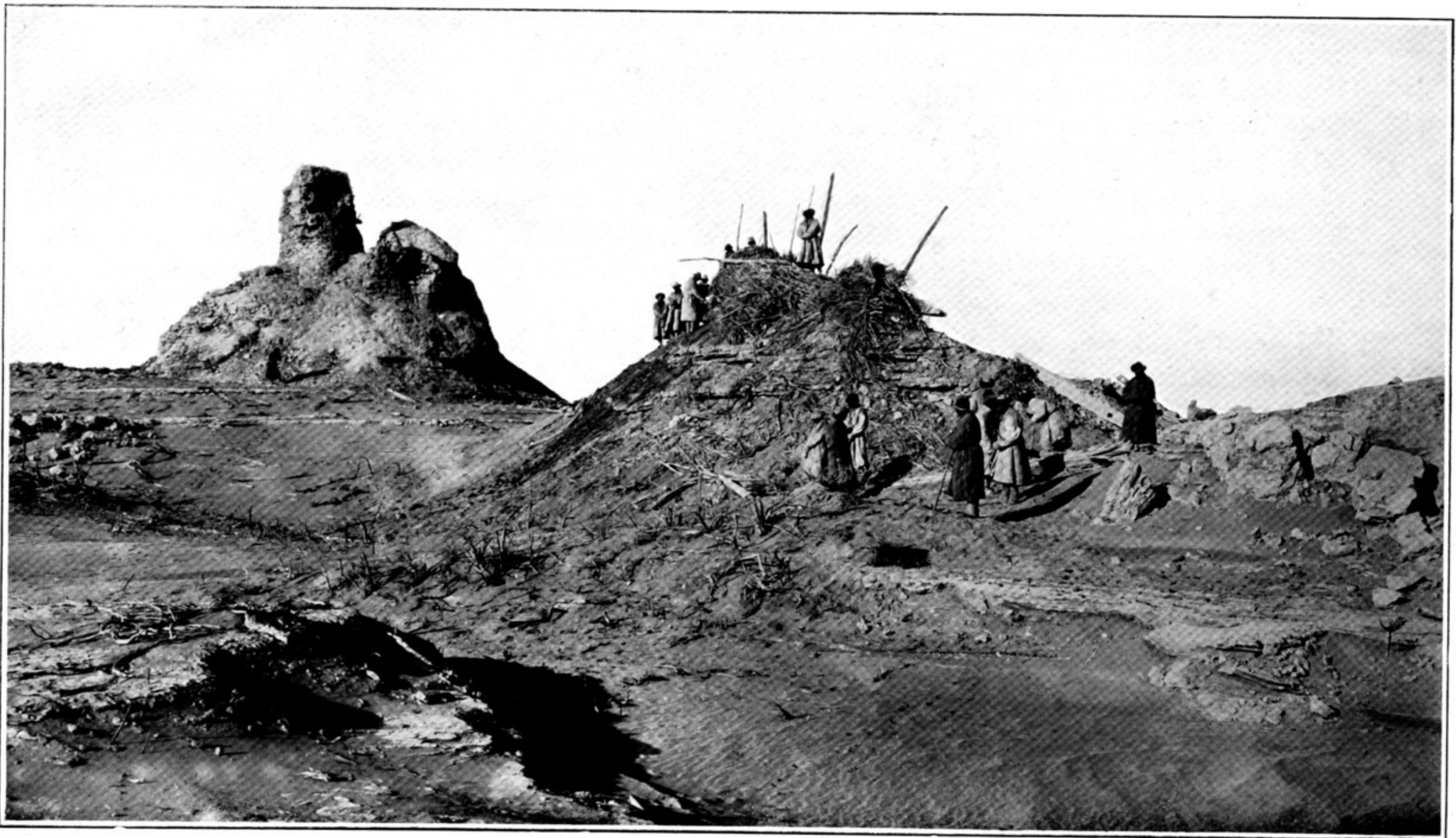


94. RUIN OF ANCIENT DWELLING L. A. I AND OF STŪPA, LOU-LAN SITE, SEEN FROM SOUTH-EAST.
 Figure of man, standing at foot of 'witness' bearing ruin L. A. I, marks depression caused by wind-erosion.



95. STŪPA RUIN AND REMAINS OF ANCIENT DWELLING, L. A. IX, SEEN FROM SOUTH.
 Dead tamarisk growth at foot and on slope of wind-eroded ridge bearing L. A. IX.