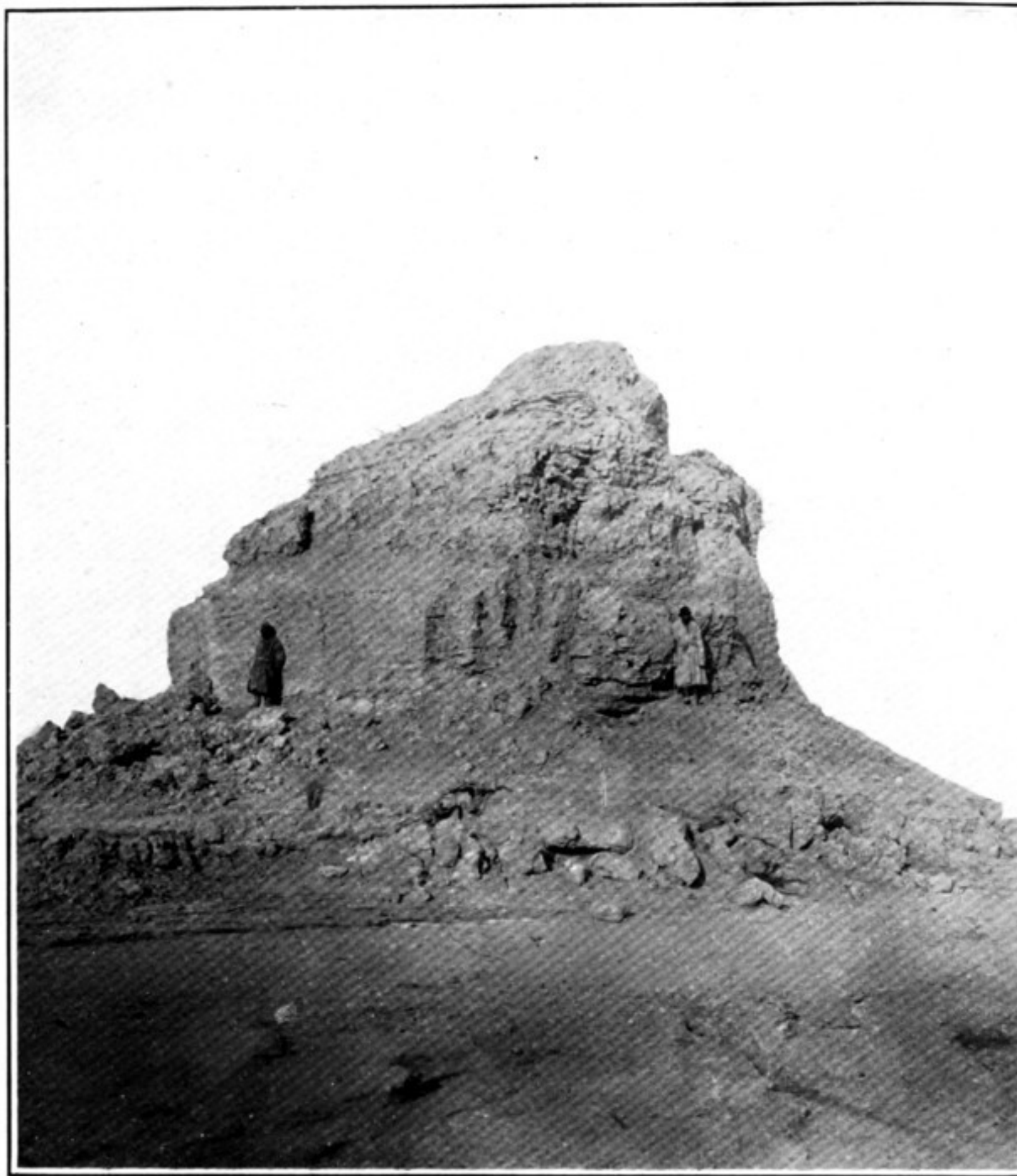
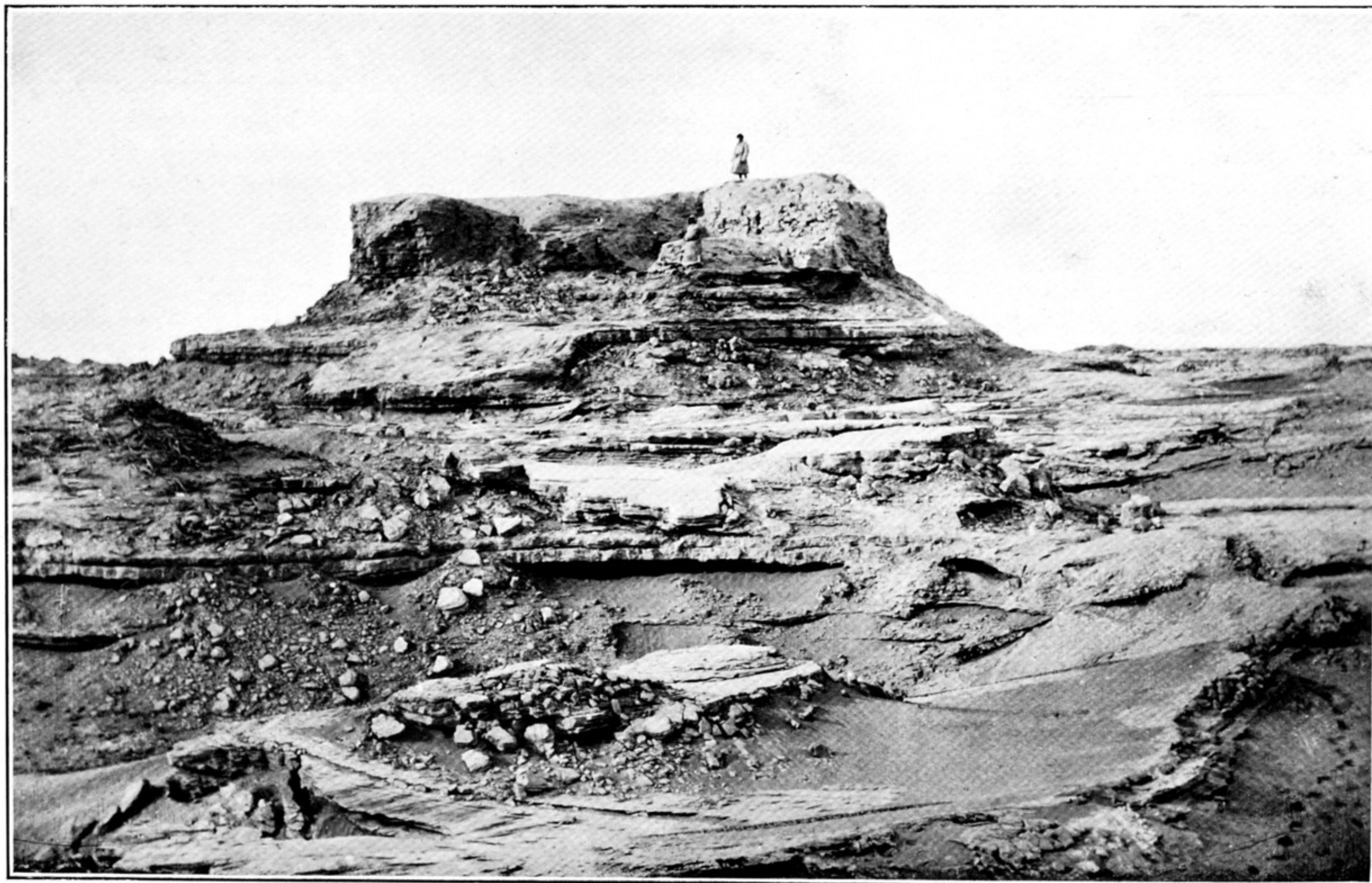


96. RUINED STŪPA, L.A. X, LOU-LAN STATION, SEEN FROM SOUTH.  
Man on left stands at foot of base, man on right on top of base.



97. STŪPA RUIN THREE MILES TO N.W. OF LOU-LAN STATION, SEEN FROM SOUTH.



98. DECAYED STŪPA MOUND L.A. XI, TO EAST OF LOU-LAN STATION, SEEN FROM SOUTH EAST.  
Lower figure of man marks original ground level at foot of Stūpa.