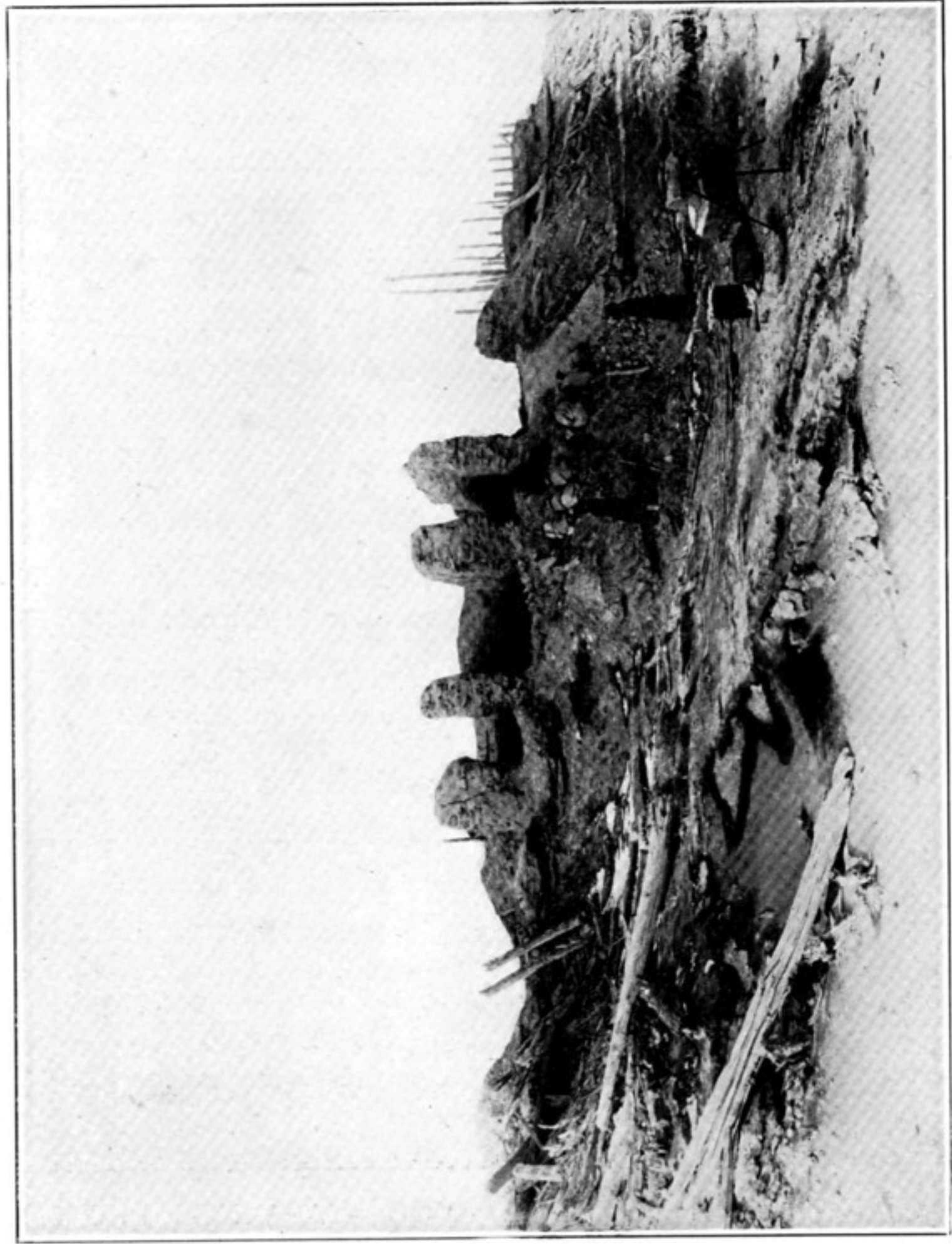


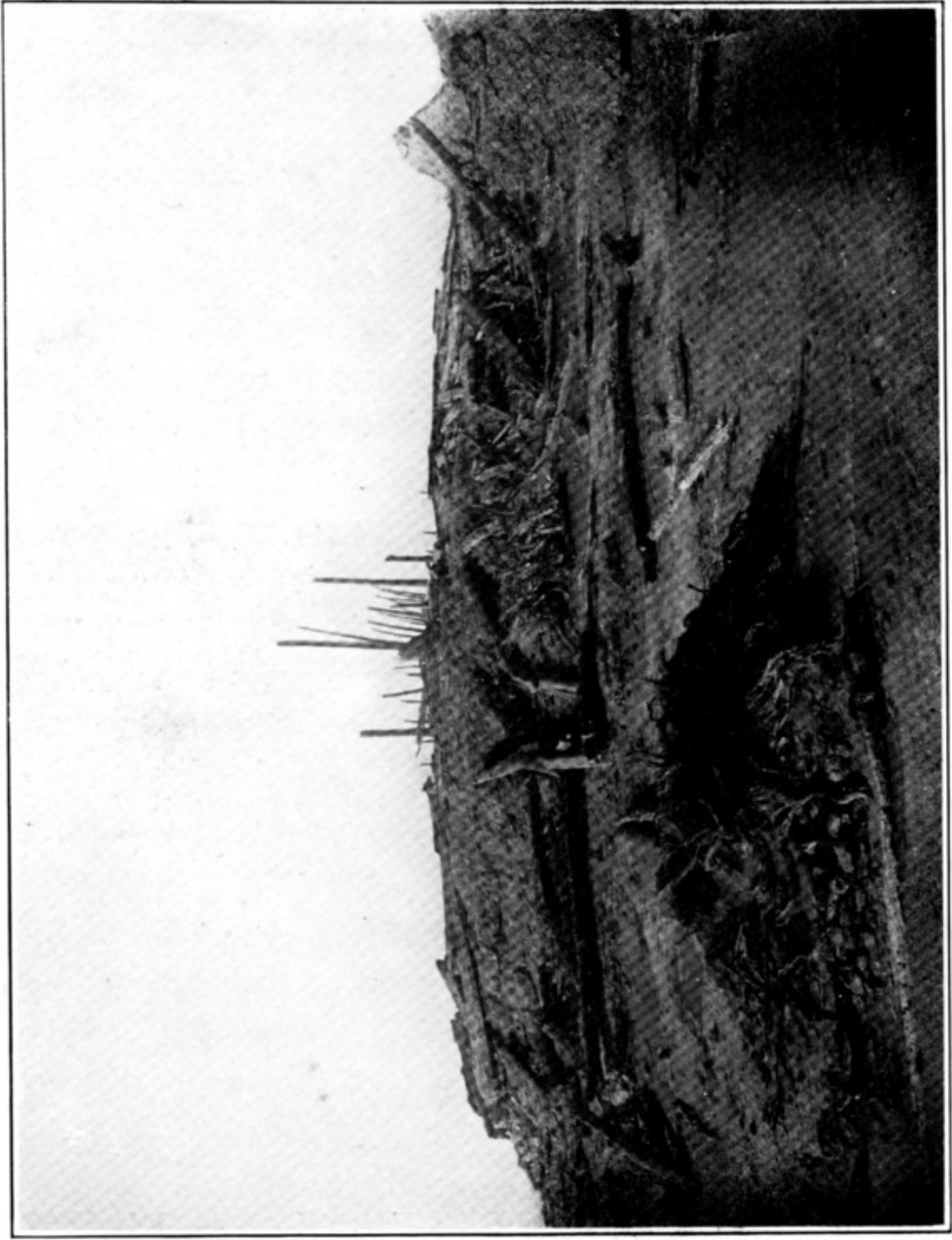
99. REMAINS OF WOOD-CARVINGS FROM RUIN L. A. III, LOU-LAN STATION.



100. REFUSE HEAPS OF L. A. VI II, LOU-LAN STATION, IN COURSE OF EXCAVATION.



101. SOUTH-WEST WING OF RUIN L. A. II, SEEN FROM SOUTH-EAST.



102. REMAINS OF RUIN L. A. III, LOU-LAN STATION, SEEN FROM NORTH-EAST.