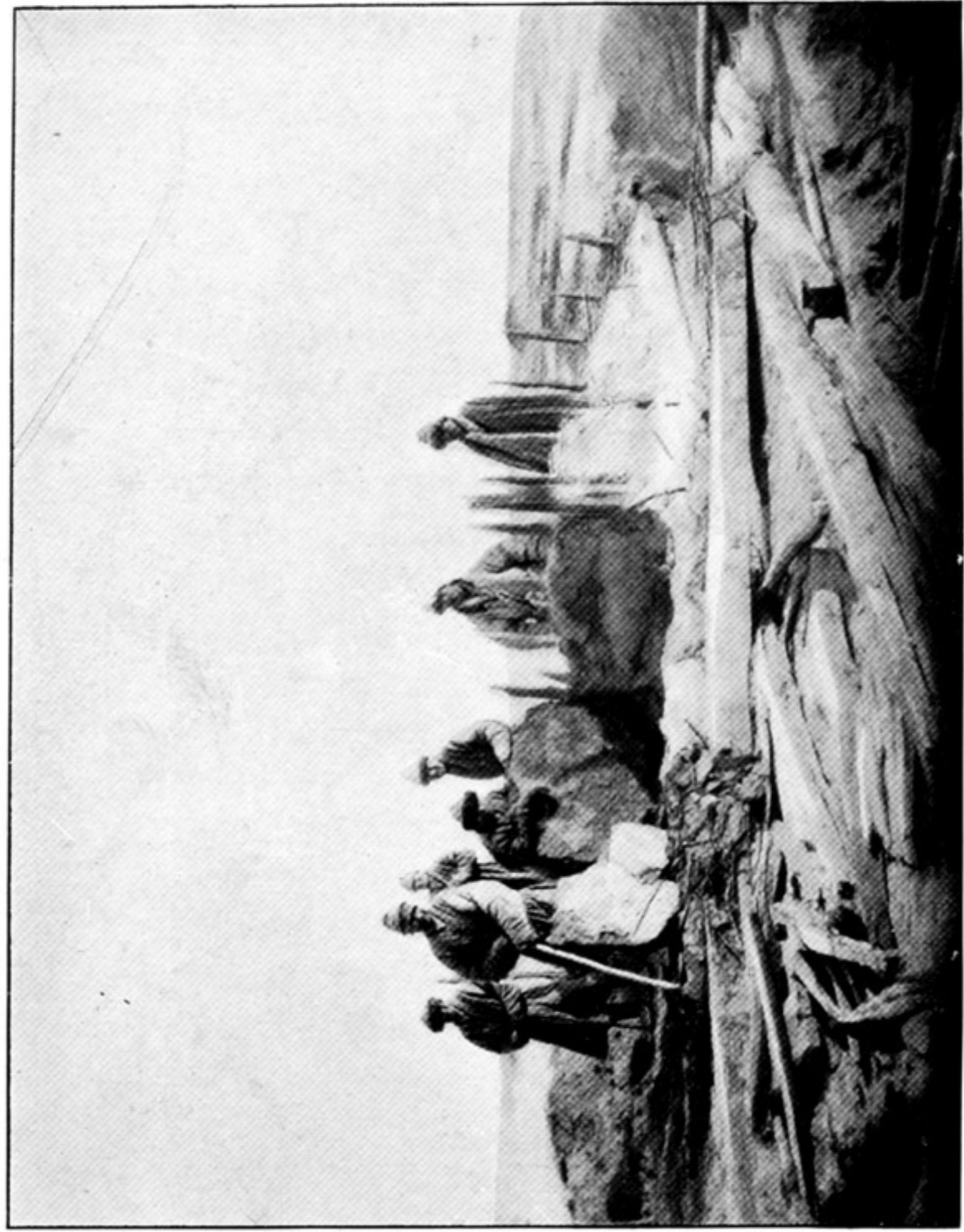
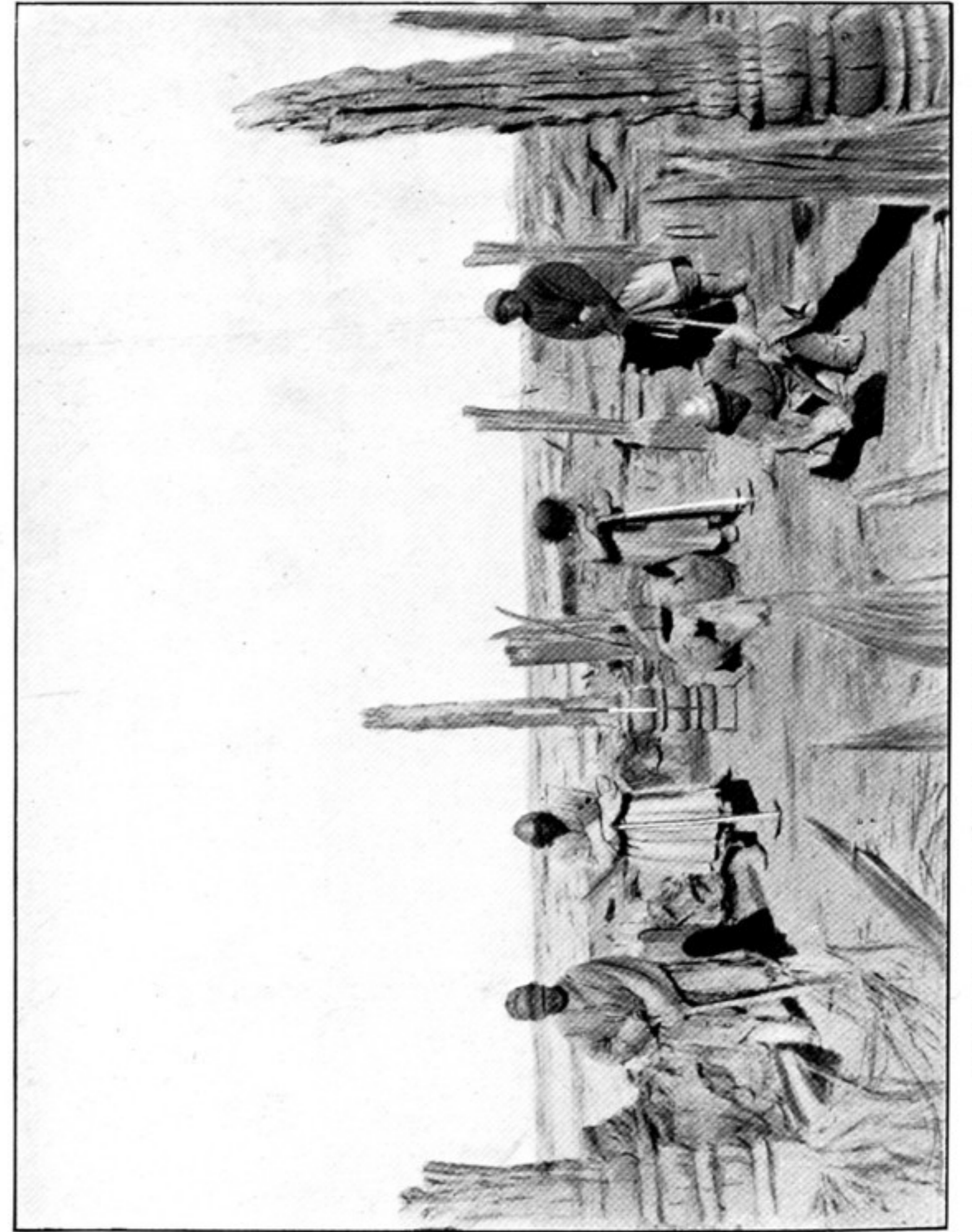


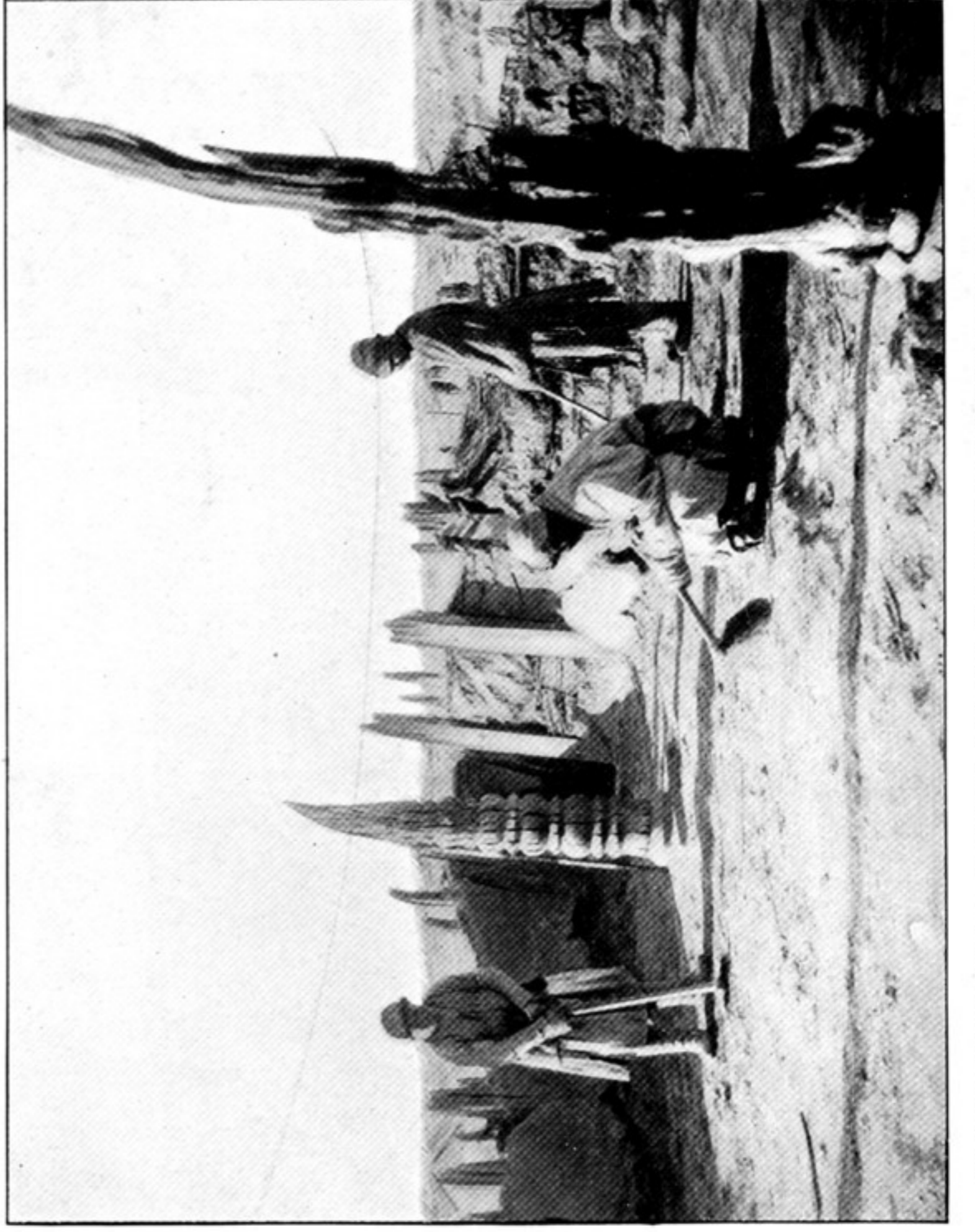
107. NORTHERN PORTION OF RUINED DWELLING L.B. IV, SEEN FROM S.E.,
AFTER EXCAVATION.
Room v with pillar in foreground.



108. ROOMS vii, viii OF RUIN L.B. IV, SEEN FROM SOUTH IN COURSE OF CLEARING.



109. VIEW ACROSS ROOM iv OF RUIN L.B. IV, LOU-LAN SITE, TOWARDS N.W.,
AFTER EXCAVATION.



110. ROOM iv OF RUIN L.B. IV, LOU-LAN SITE, LOOKING TOWARDS WEST, AFTER EXCAVATION.