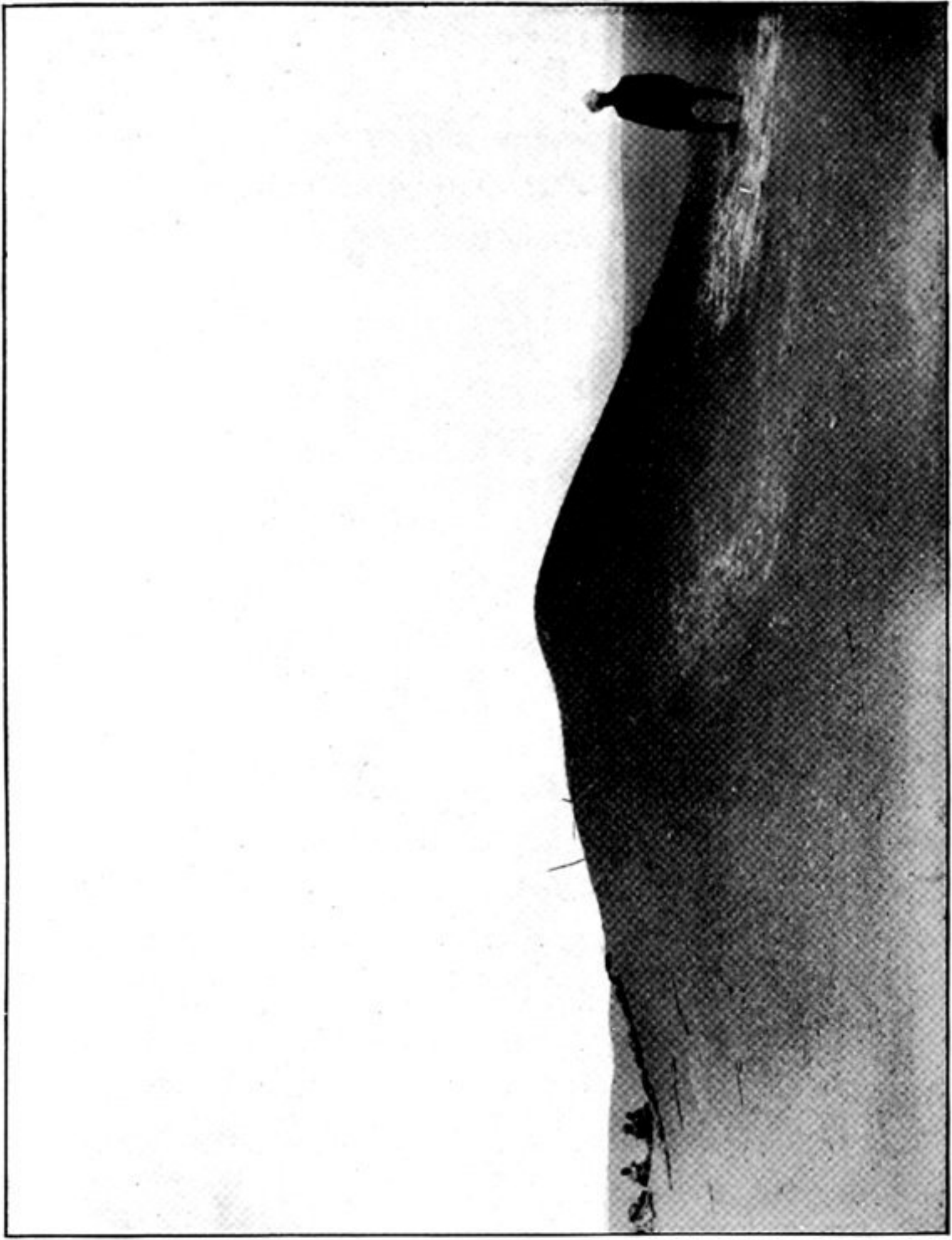
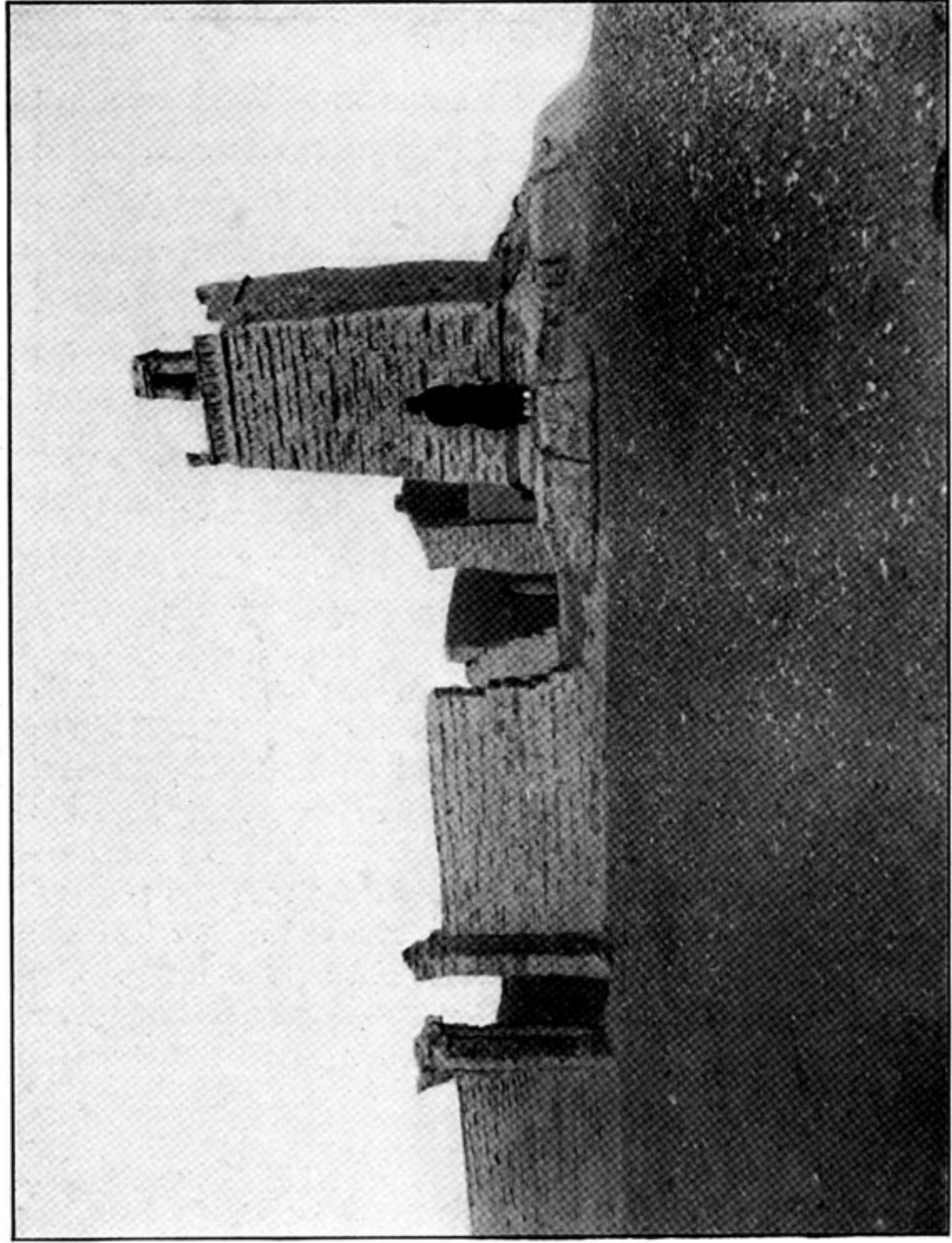


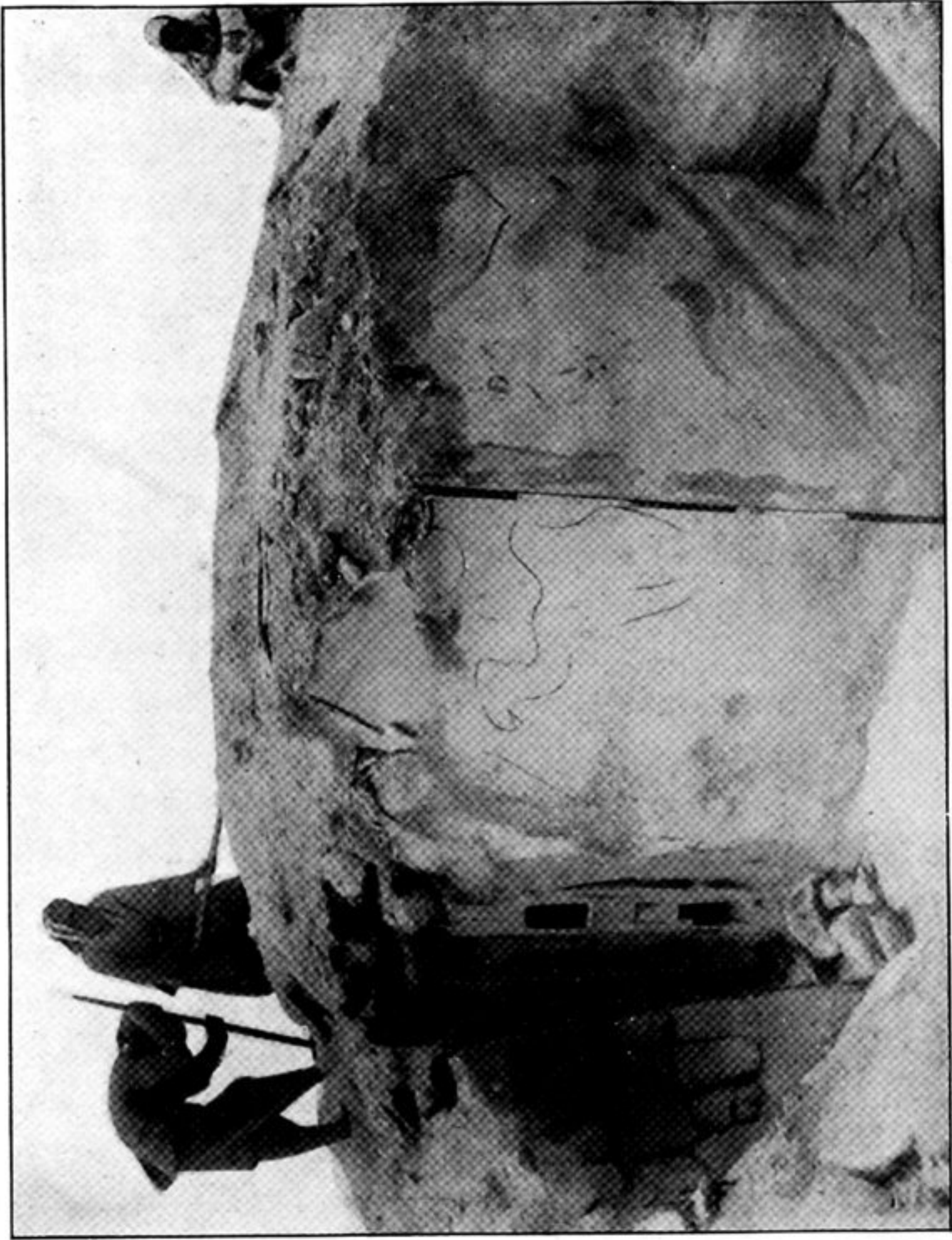
165. GRAVE TUMULUS WITH ANNULAR RIM, AT ANCIENT BURIAL-GROUND, N.E. OF NAN-HU.



166. MOUND CONTAINING REMAINS OF ANCIENT WATCH-TOWER T. VIII, TUN-HUANG LIMES, SEEN FROM S.W. BEFORE EXCAVATION.



167. MODERN WATCH-TOWER, WITH ADJOINING QUARTERS, ON ROAD SOUTH-WEST OF TUN HUANG.



168. INTERIOR OF ROOM i ADJOINING WATCH-TOWER T. VIII, TUN-HUANG LIMES, AFTER EXCAVATION.

Door opening from ii on left, remains of steps of stairs on right