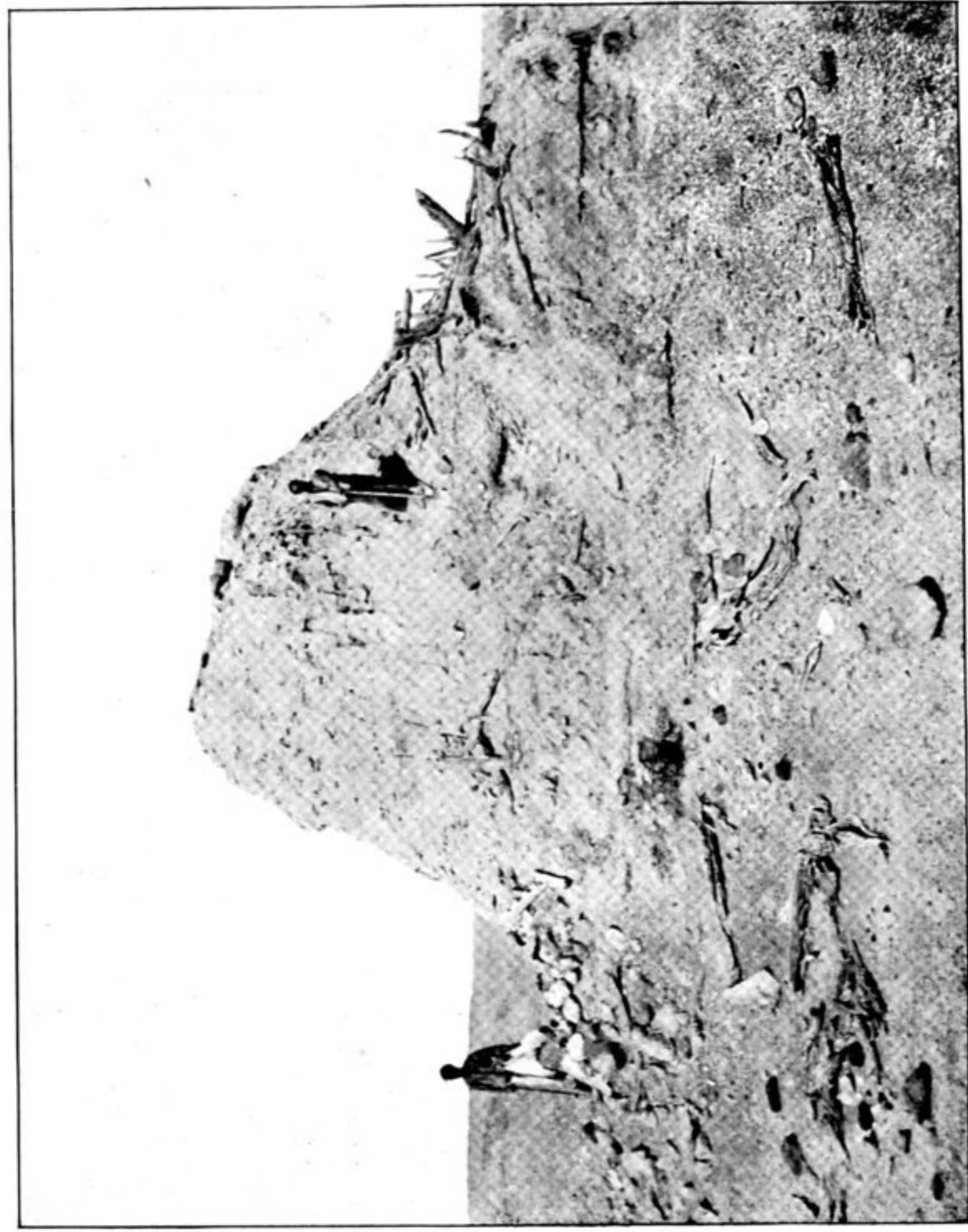
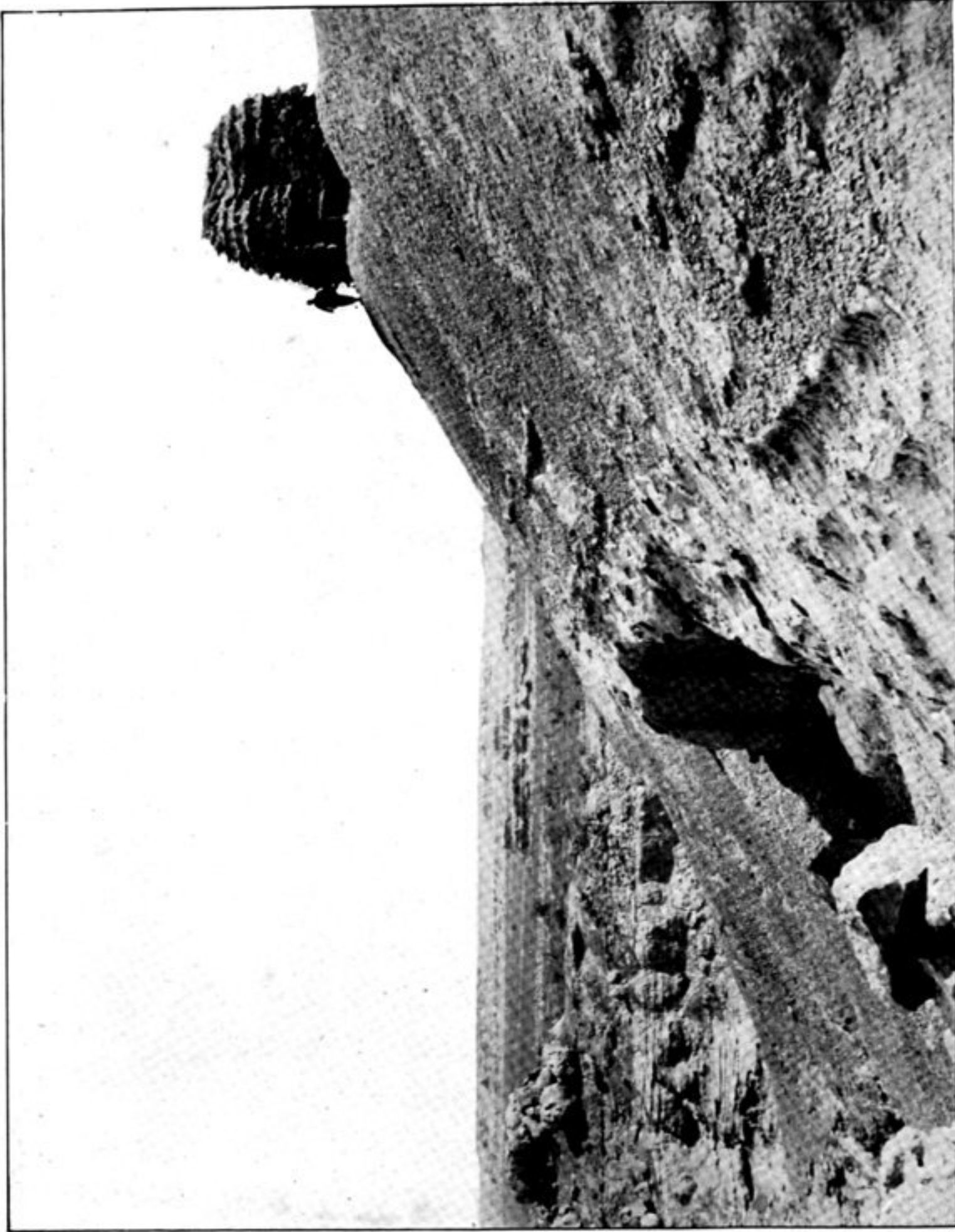


169. RUIN OF ANCIENT WATCH-TOWER T. VI. a, TUN-HUANG LIMES, SEEN FROM EAST.
On right sandy depression with Toghraaks and reed beds.

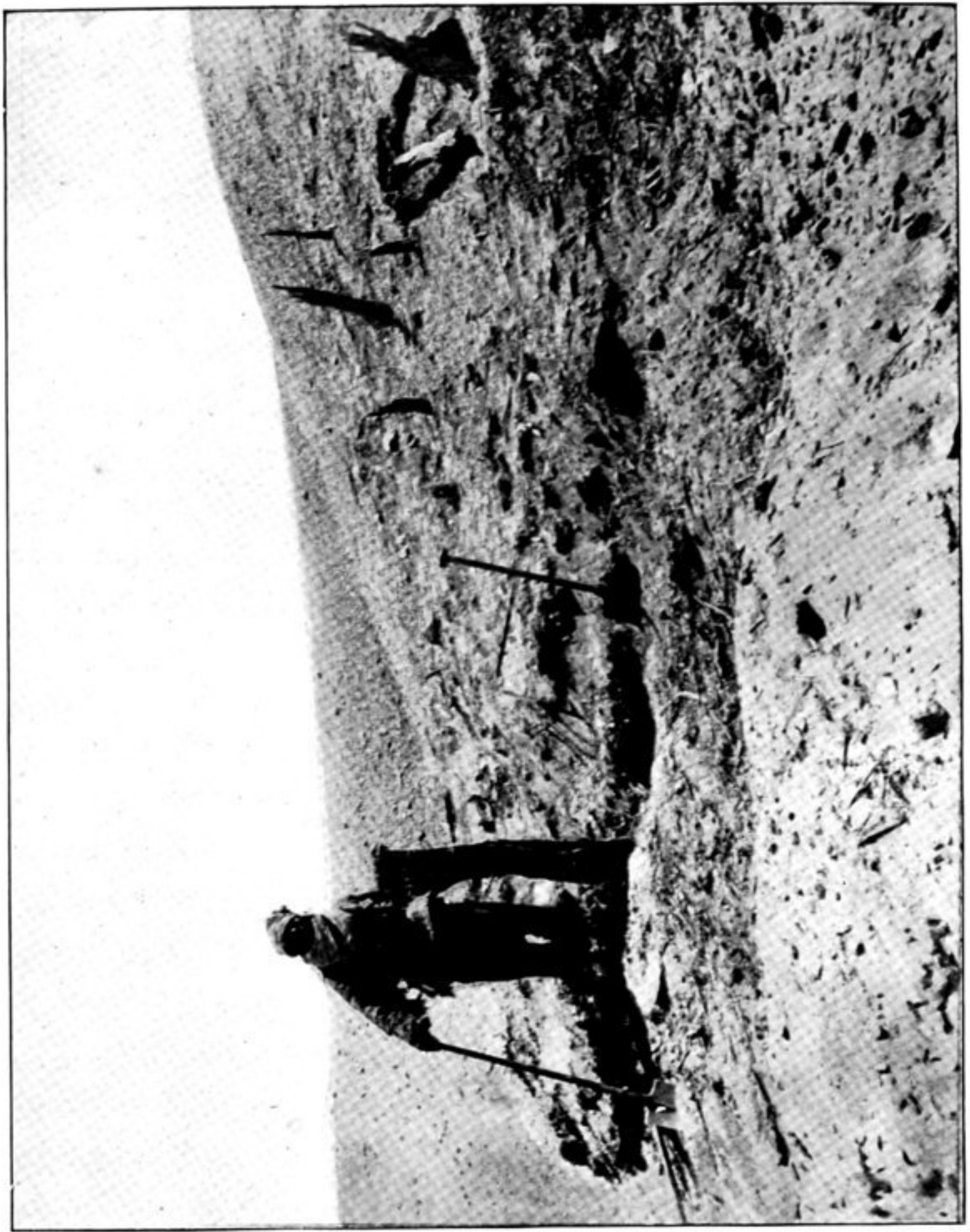


171. REMAINS OF ANCIENT WATCH-TOWER T. VI. b AND QUARTERS, TUN-HUANG LIMES,
BEFORE EXCAVATION, SEEN FROM SOUTH-EAST.



A

170. RUIN OF ANCIENT WATCH TOWER T. IV. c, TUN-HUANG LIMES, WITH VIEW TOWARDS
NORTH-WEST.
On left an eroded clay terrace with deep-cut Nullah. Across depression with Toghraaks and tamarisks is seen in distance
an isolated clay terrace (A), bearing remains of ruined watch-tower T. IV. a.



172. RUBBISH-STREWN SLOPE BELOW ANCIENT WATCH-TOWER T. VI. b, IN COURSE OF
EXCAVATION.
The splintered piece of timber held by labourer marks the spot where the main heap of Chinese records on wood
was discovered close to the surface.