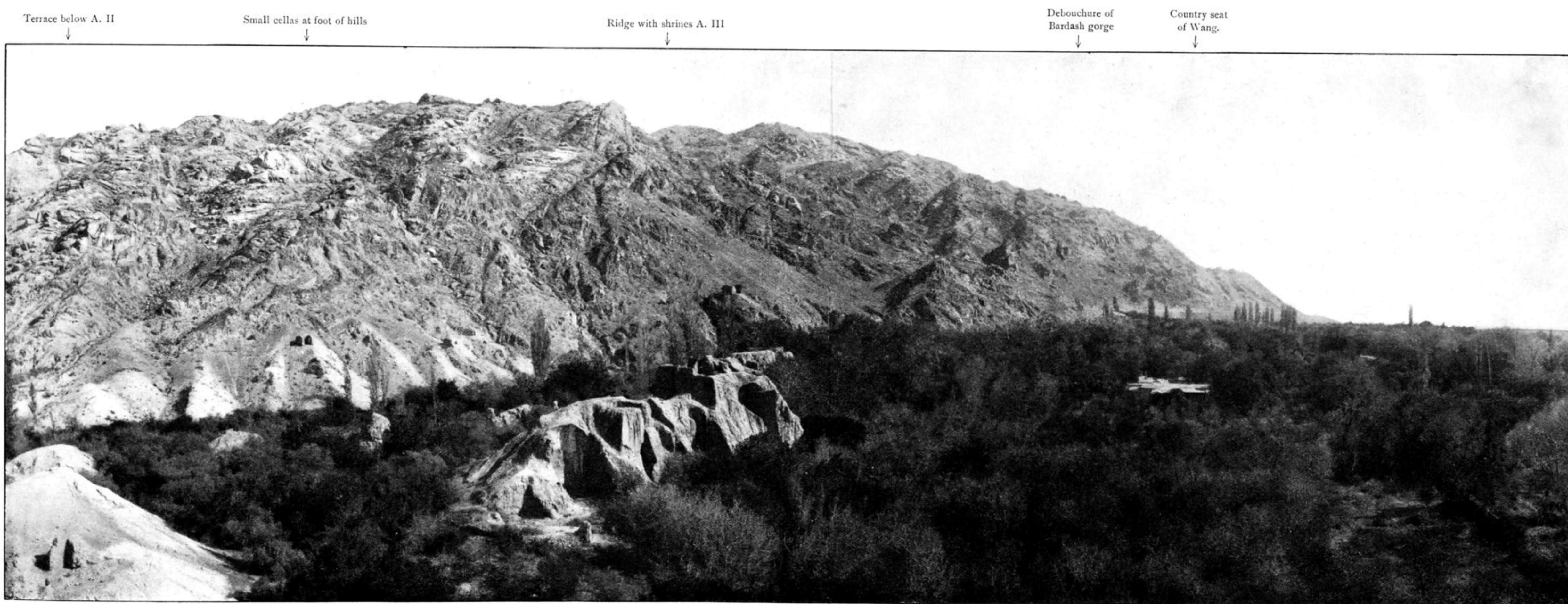


191. PANORAMIC VIEW OF THE 'CAVES OF THE THOUSAND BUDDHAS', TUN-HUANG, SEEN FROM ACROSS STREAM TO EAST.



192. PANORAMIC VIEW OF RUINED SITE, ARA-TAM, WITH COUNTRY SEAT AND ORCHARDS OF WANG OF HĀMI, SEEN FROM SOUTH-EAST.